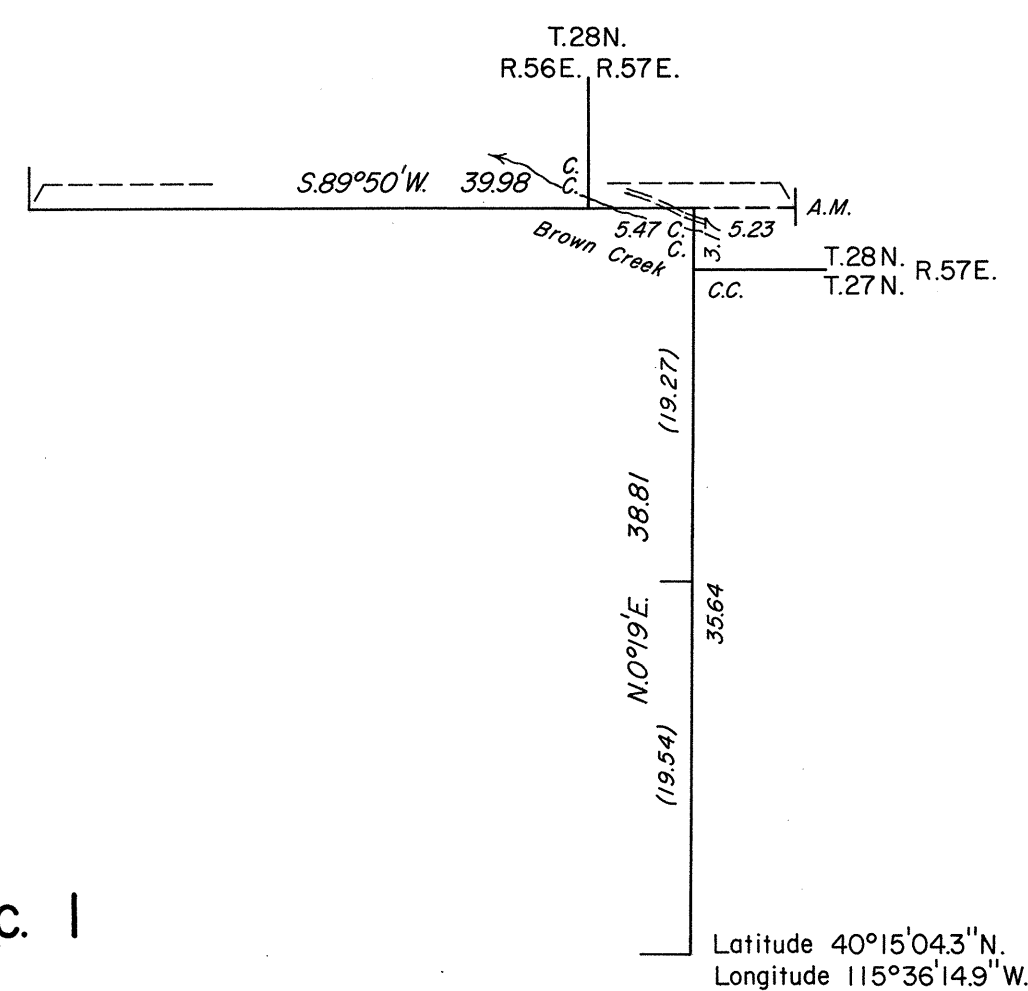


TOWNSHIP 27 NORTH, RANGE 56 EAST, OF THE MOUNT DIABLO MERIDIAN, NEVADA
DEPENDENT RESURVEY

Sec. 36

Sec. 31

Sec. 1



History of the earlier surveys is contained in the field notes.

A dependent resurvey of the north boundary was executed concurrently under T. 28 N., R. 56 E., of this same Group.

This plat represents a dependent resurvey of a portion of the east boundary of T. 27 N., R. 56 E., designed to restore the corners in their true original locations according to the best available evidence.

Survey executed by Robert A. Pratt, Cadastral Surveyor, August 6, 1981, under Special Instructions dated September 30, 1980, for Group No. 588, Nevada.

UNITED STATES DEPARTMENT OF THE INTERIOR
BUREAU OF LAND MANAGEMENT

Reno, Nevada

September 14, 1983

This plat is strictly conformable to the approved field notes, and the survey, having been correctly executed in accordance with the requirements of law and the regulations of this Bureau, is hereby accepted.

For the Director

Deputy State Director, Operations

