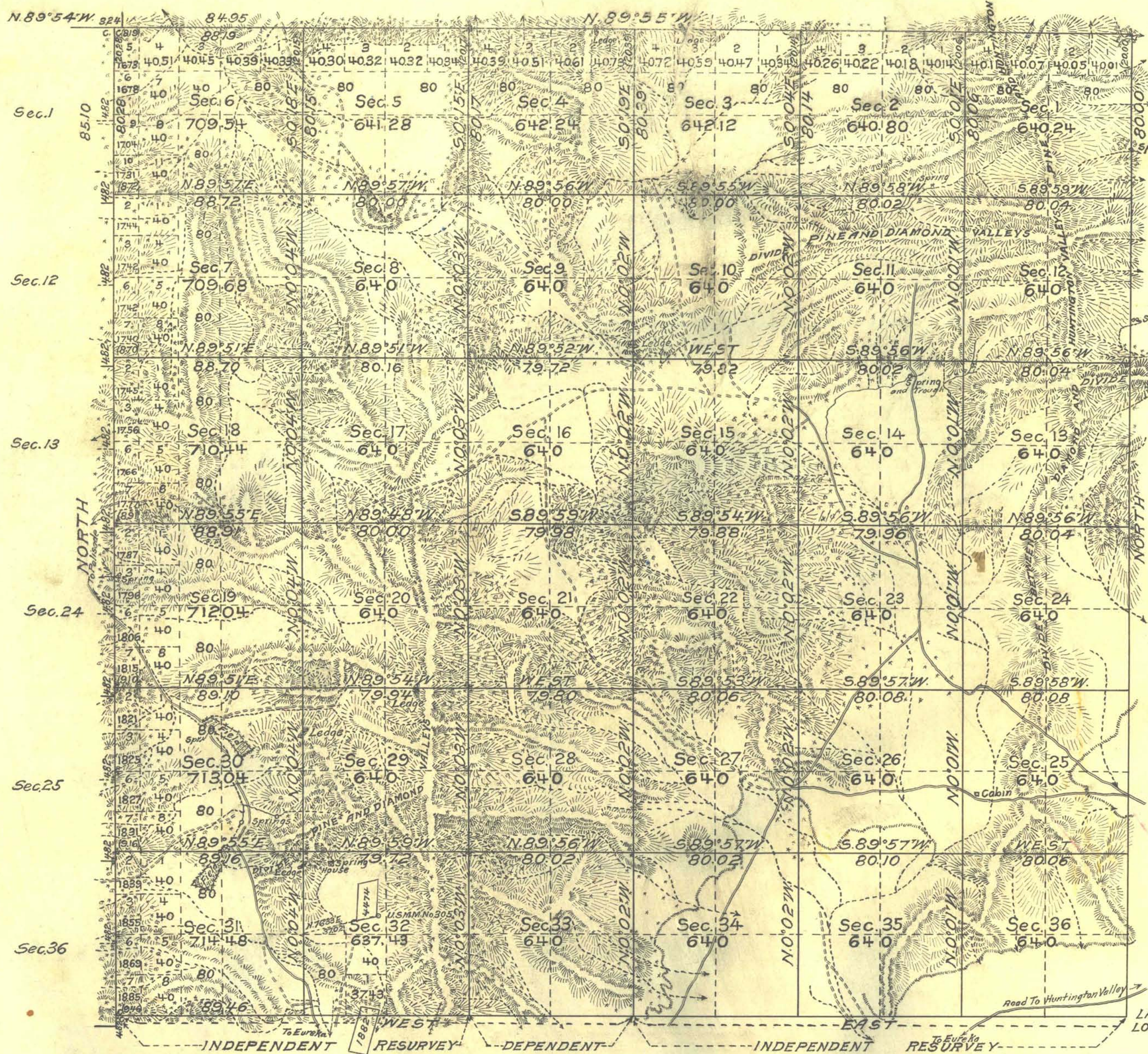


TOWNSHIP N° 27 NORTH RANGE N° 53 EAST MOUNT DIABLO MERIDIAN NEVADA



Union Mining District.

Sur.No.	Name of Lode	Claimant	Acres
1882	Bell Lindsey	Sadie Lindsey	20.25
4474	Union No. 1	Joseph Flynn, Jr.	16.23

Mean Magnetic Declination, Scale: 40 Chains to an Inch. Area Surveyed 2347333 Acres.

LINES DESIGNATED	BY WHOM SURVEYED	No	GROUP DATE	MILEAGE		WHEN SURVEYED	
				MLS.	CHS.	BEGUN	COMPLETED
Exterior S	Carl S. Swanholm	111	April 23, 1923	11	9.46	Oct. 31, 1924	Nov. 21, 1924
Subdivisional	Swanholm & Ridgway	111	" " "	60	45.06	Nov. 7, 1924	Nov. 10, 1926
Exteriors	George W. Ridgway	111	" " "	13	13.29	July 1, 1926	Nov. 17, 1926
Miscellaneous	" " "	111	" " "	1	60.64	July 10, 1926	Aug. 3, 1926

Office of U.S. Supervisor of Surveys
 Denver, Colorado, Dec. 6, 1927.
 The above plat of Township No. 27 North, Range No. 53 East of the Mount Diablo Meridian, Nevada is strictly conformable to the field notes of the survey thereof which have been examined and approved.

Samuel D. Johnson
 U.S. Supervisor of Surveys.

DEPARTMENT OF THE INTERIOR
 GENERAL LAND OFFICE
 Washington, D.C., April 21, 1928.
 The survey represented by this plat having been correctly executed in accordance with the requirements of law and the regulations of this office, is hereby accepted.

Thomas C. Stowell
 Assistant Commissioner.