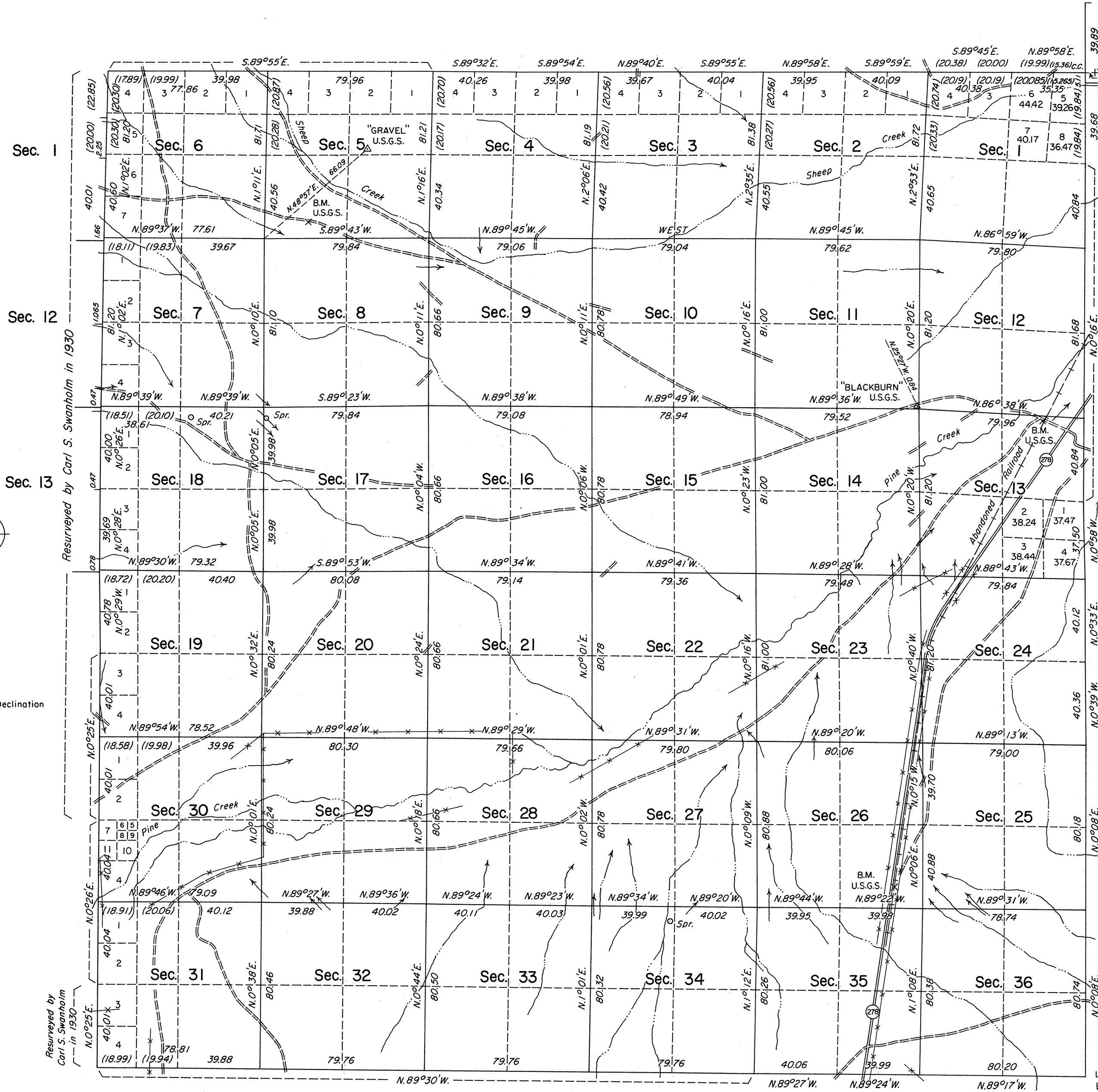


ORIGINAL

TOWNSHIP 27 NORTH, RANGE 51 EAST, OF THE MOUNT DIABLO MERIDIAN, NEVADA  
DEPENDENT RESURVEY

Sec. 31



History of the earlier surveys is contained in the field notes.

A dependent resurvey of the west boundary of T. 28 N., R. 52 E., was executed concurrently under this same Group.

This plat represents a dependent resurvey of the south, east and north boundaries, a portion of the west boundary and the subdivisional lines of T. 27 N., R. 51 E., designed to restore the corners in their original locations according to the best available evidence.

Areas and lottings, except as shown hereon, are as shown on the plat approved May 12, 1879 and the plat accepted July 15, 1971.

Survey executed by John A. Farmer and Stephen R. Lambeth, Cadastral Surveyors, beginning September 24, 1984 and completed July 30, 1985, under Special Instructions dated September 19, 1984 and Supplemental Special Instructions dated July 16, 1985, for Group No. 619, Nevada.

UNITED STATES DEPARTMENT OF THE INTERIOR  
BUREAU OF LAND MANAGEMENT

Reno, Nevada December 22, 1986

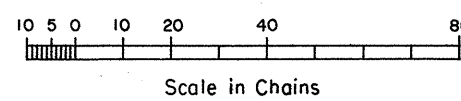
This plat is strictly conformable to the approved field notes, and the survey, having been correctly executed in accordance with the requirements of law and the regulations of this Bureau, is hereby accepted.

For the Director

*Lacl E. Bland*

Chief Cadastral Surveyor

Latitude 40°10'13.2"N,  
Longitude 116°09'38.0"W



*cu  
11/19/86  
x*