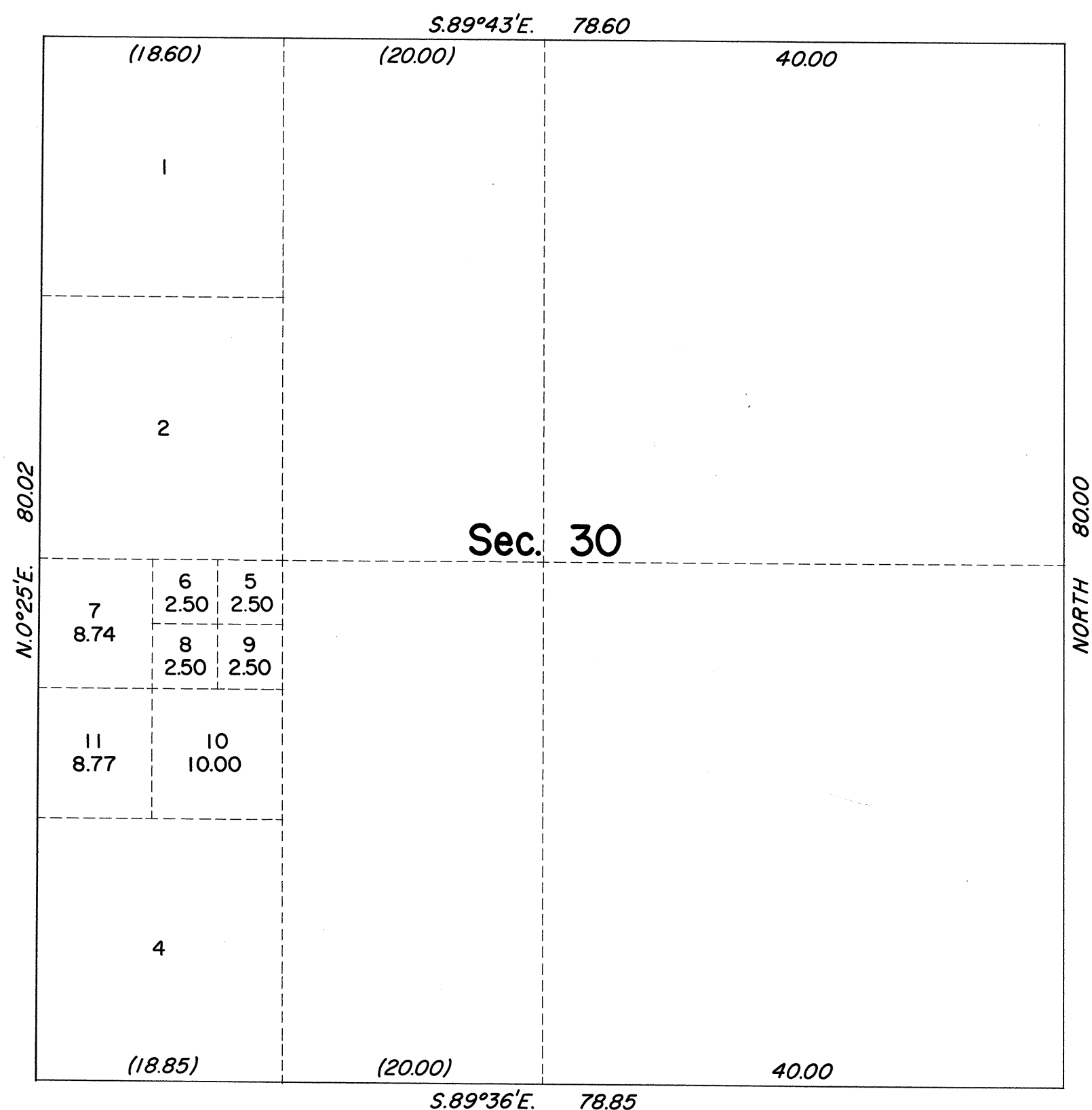


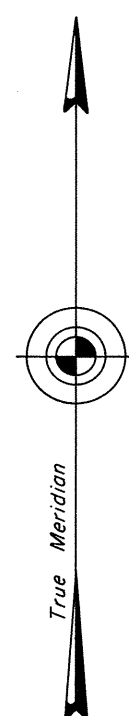
ORIGINAL

TOWNSHIP 27 NORTH, RANGE 51 EAST, OF THE MOUNT DIABLO MERIDIAN, NEVADA  
SUPPLEMENTAL PLAT OF SECTION 30

OFFICIALLY FILED  
NEVADA LAND OFFICE  
10:00 AM July 29, 1971



This supplemental plat, showing amended  
lottings in section 30, T. 27 N., R. 51 E.,  
is based on the plat of T. 27 N., R. 51 E.,  
approved May 12, 1879, and the plat of  
T. 27 N., R. 50 E., approved February 27,  
1932.



UNITED STATES DEPARTMENT OF THE INTERIOR  
BUREAU OF LAND MANAGEMENT  
Washington, D. C. July 15, 1971

This plat, showing amended lottings, is based  
upon the official records, and having been  
correctly prepared in accordance with the  
regulations, is hereby accepted.

For the Director

Chief, Division of Cadastral Survey

