

TOWNSHIP 27 NORTH, RANGE 48 EAST, OF THE MOUNT DIABLO MERIDIAN, NEVADA

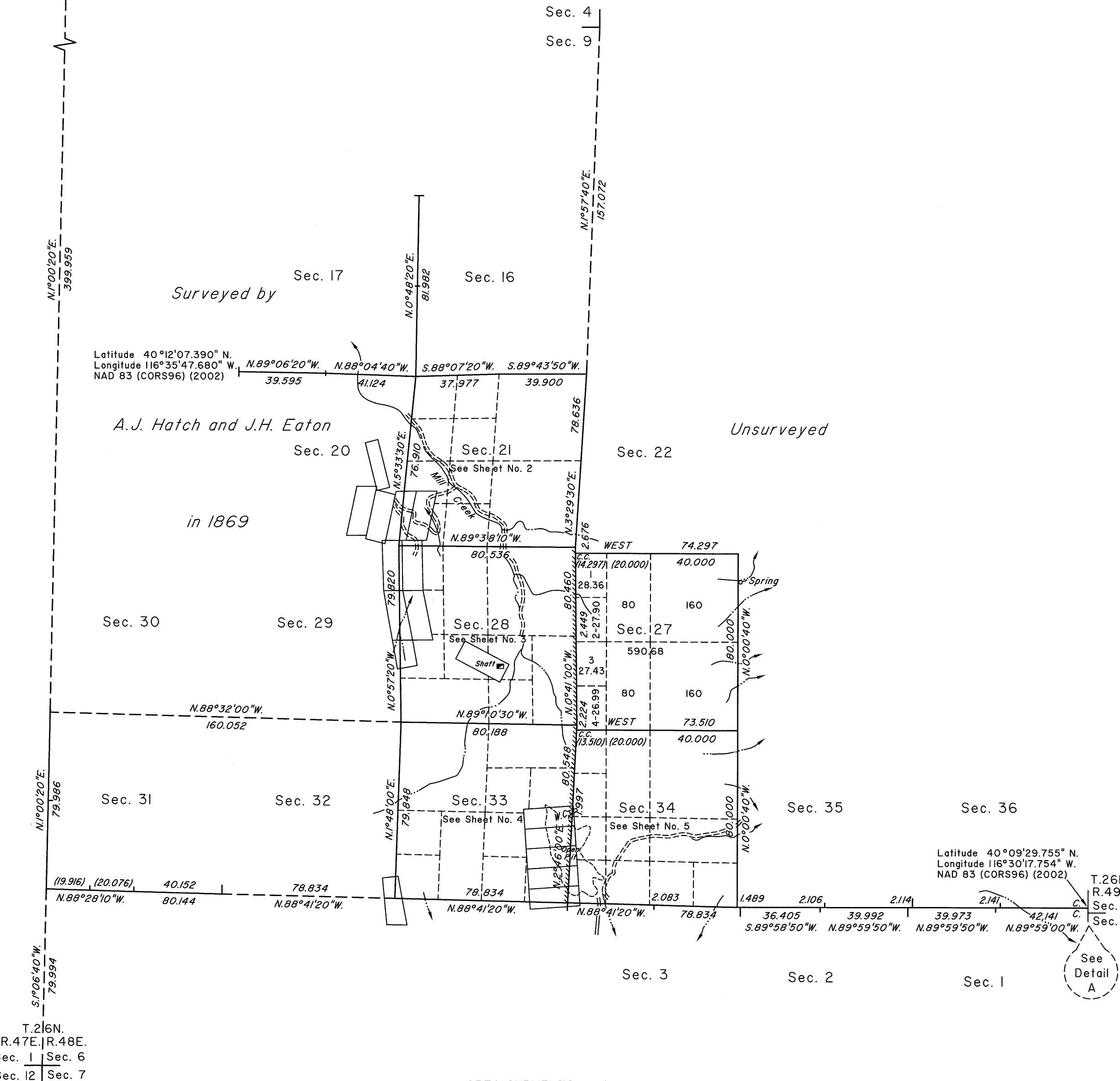
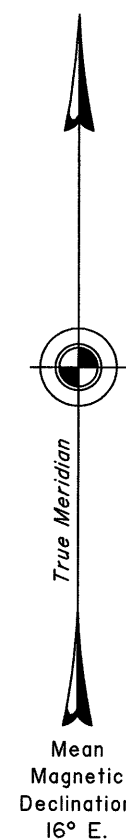
DEPENDENT RESURVEY AND SURVEY

OFFICIALLY FILED
NEVADA STATE OFFICE
at 10:00 AM on DEC 23 2013

T.28N.
R.47E. R.48E.
Sec. 36 | Sec. 31
Sec. 1 | Sec. 6
T.27N.

DETAIL "A"
Not to Scale

T.27N.
R.48E.
Sec. 36
Sec. 1
R.48E.
T.26N.
Sec. 6 T.26N.
Sec. 7 R.49E.



A history of surveys is contained in the field notes.

This plat, in five sheets, represents the dependent resurvey of portions of the north boundary of Township 26 North, Range 48 East; and the dependent resurvey of a portion of the west boundary, a portion of the subdivisional lines, and portions of certain mineral surveys designed to restore the corners in their true original locations according to the best available evidence, and the survey of a portion of the subdivisional lines of Township 27 North, Range 48 East, Mount Diablo Meridian, Nevada.

Except as indicated hereon, the lottings and areas are as shown on the plat approved December 7, 1869.

Unless otherwise indicated in the field notes, all courses and distances shown on the plat along the perimeter of the mineral segregation areas, were taken or computed from the appropriate mineral survey record.

Survey executed by Lance A. Barney and Michael E. Swope, Cadastral Surveyors, beginning May 26, 2010 and completed September 15, 2013, pursuant to Special Instructions dated May 25, 2010, and Amended Special Instructions dated September 3, 2013, for Group No. 895, Nevada.

UNITED STATES DEPARTMENT OF THE INTERIOR
BUREAU OF LAND MANAGEMENT

Reno, Nevada November 5, 2013

This plat is strictly conformable to the approved field notes, and the survey, having been correctly executed in accordance with the requirements of law and the regulations of this Bureau, is hereby accepted.

For the Director

David L. Morlan

Chief Cadastral Surveyor for Nevada

T.27N., R.48E., M.D.M.