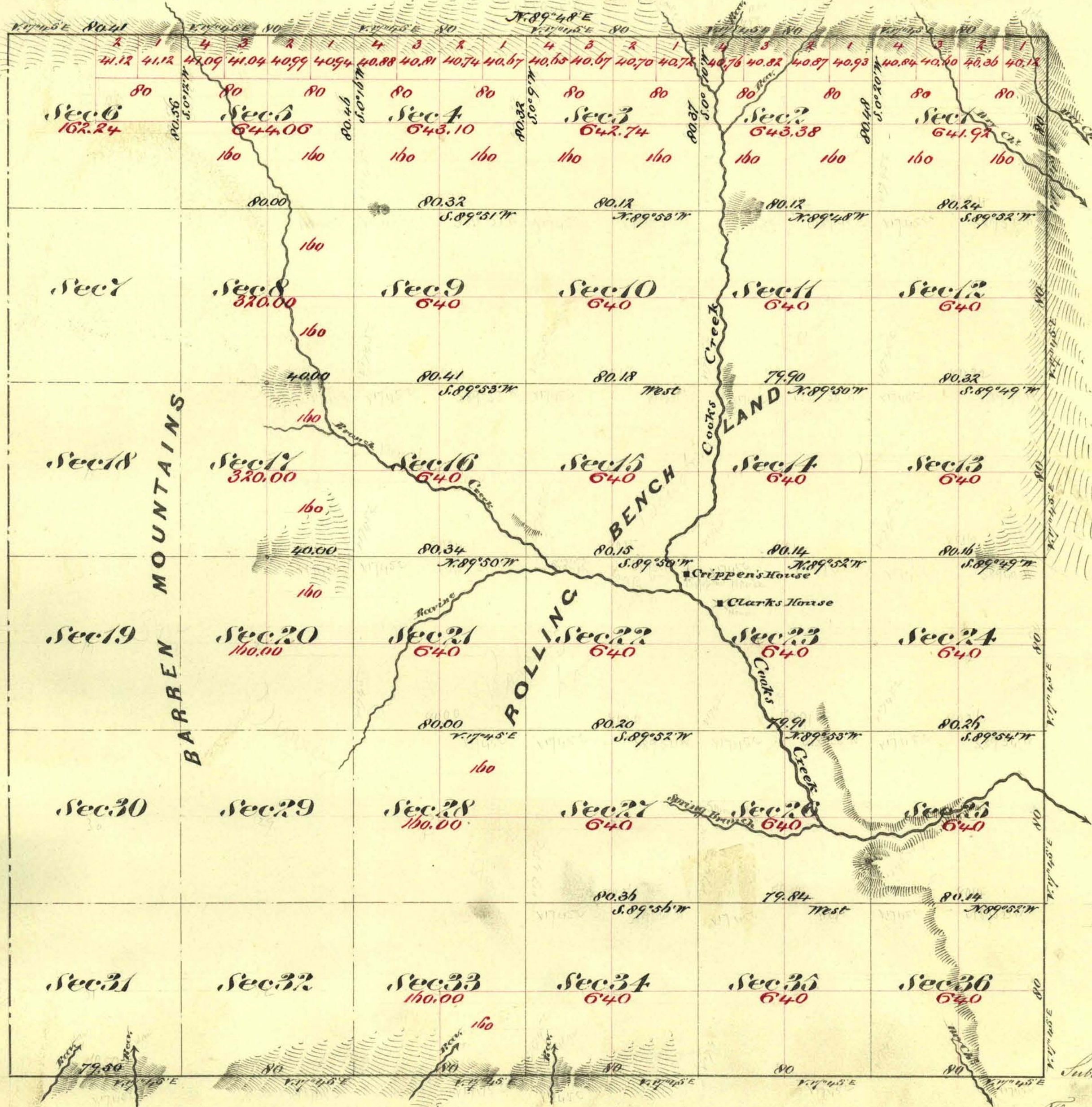


Township N^o 27 North

Range N^o 45 East

Mount Diablo Meridian



Aggregate Area of Public Land (Surveyed) 14,017.44 Acres
 Estimated " " Mountains (unsurveyed) 7,155.35 "
 Aggregate 21,172.80 "

Commenced Oct. 23rd 1874
 Completed " 29th 1874

Subdivision lines not otherwise noted run with a line of 77^o 45' East

| Surveys Designated | By Whom Surveyed | Date of Contract | Am't of Survey Ac. & Cts. & Ms. | When Surveyed |
|--------------------|---|----------------------------|------------------------------------|---------------|
| Township Lines | Wm. H. H. & Wm. H. H. & Co. & P. B. & Co. | July 25 th 1874 | 17 79 91 | 1874 |
| Subdivision Lines | " " " " | " " " | 44 05 20 | Oct. 1874 |

J. P. Cox

63 64

* 64

The above Map of Township N^o 27 North, Range N^o 45 East, Mount Diablo Meridian is strictly conformable to the field notes of the survey thereof on file in this Office, which have been examined and approved
 Wm. H. H. & Wm. H. H. & Co. General's Office
 Virginia City, Nevada
 November 30th 1874