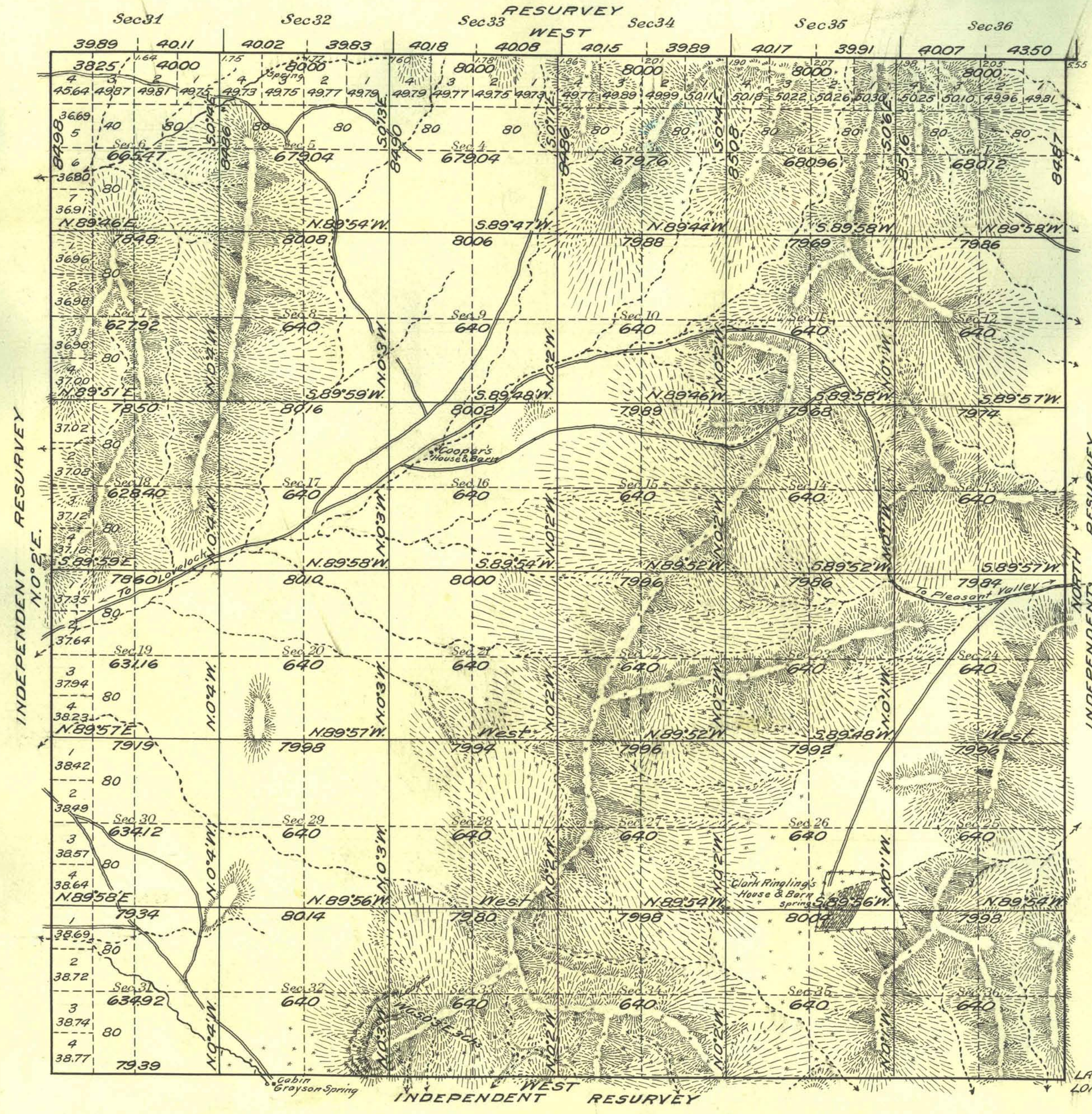


Township N^o 27 North Range N^o 37 East M^t Diablo Meridian, Nevada



Note
Surveyor reports mineral indications
in S.W. portion of township

Areas in Acres	
Public Land	2322091
Indian Reservation	
Indian Allotments	
Mineral Claims	
Water Surface	
Total Area	2322091

LATITUDE 40°08' N
LONGITUDE 117°44' W
Scale 40 Chains to an inch
Mean Magnetic Declination

Surveys Designated	By Whom Surveyed	Group No.	Date	Amount of Surveys			When Surveyed	
				Mls.	chs.	lks.	Begun	Completed
North Boundary Res.	George W. Ridgway	89	Feb. 8, 1921	5	78	25	Aug. 18, 1922	Aug. 21, 1922
East Boundary Ind. Res.	U.S. Cad. Eng.			6	04	37	Aug. 5, 1922	Aug. 7, 1922
South Boundary Ind. Res.				5	79	39	Aug. 8, 1922	Aug. 10, 1922
West Boundary Ind. Res.				6	04	38	Aug. 10, 1922	Aug. 28, 1922
Subdivisions				60	17	79	Aug. 12, 1922	Sept. 4, 1922

The above map of Township No. 27 North Range No. 37 East of the Mt. Diablo Meridian Nevada is strictly conformable to the field notes of the survey thereof on file in this office, which have been examined and approved.
U. S. Surveyor General's Office.
Reno Nevada, September 10, 1923

J. E. Elden
Surveyor General.

J.R.C.

T27N.R.37E