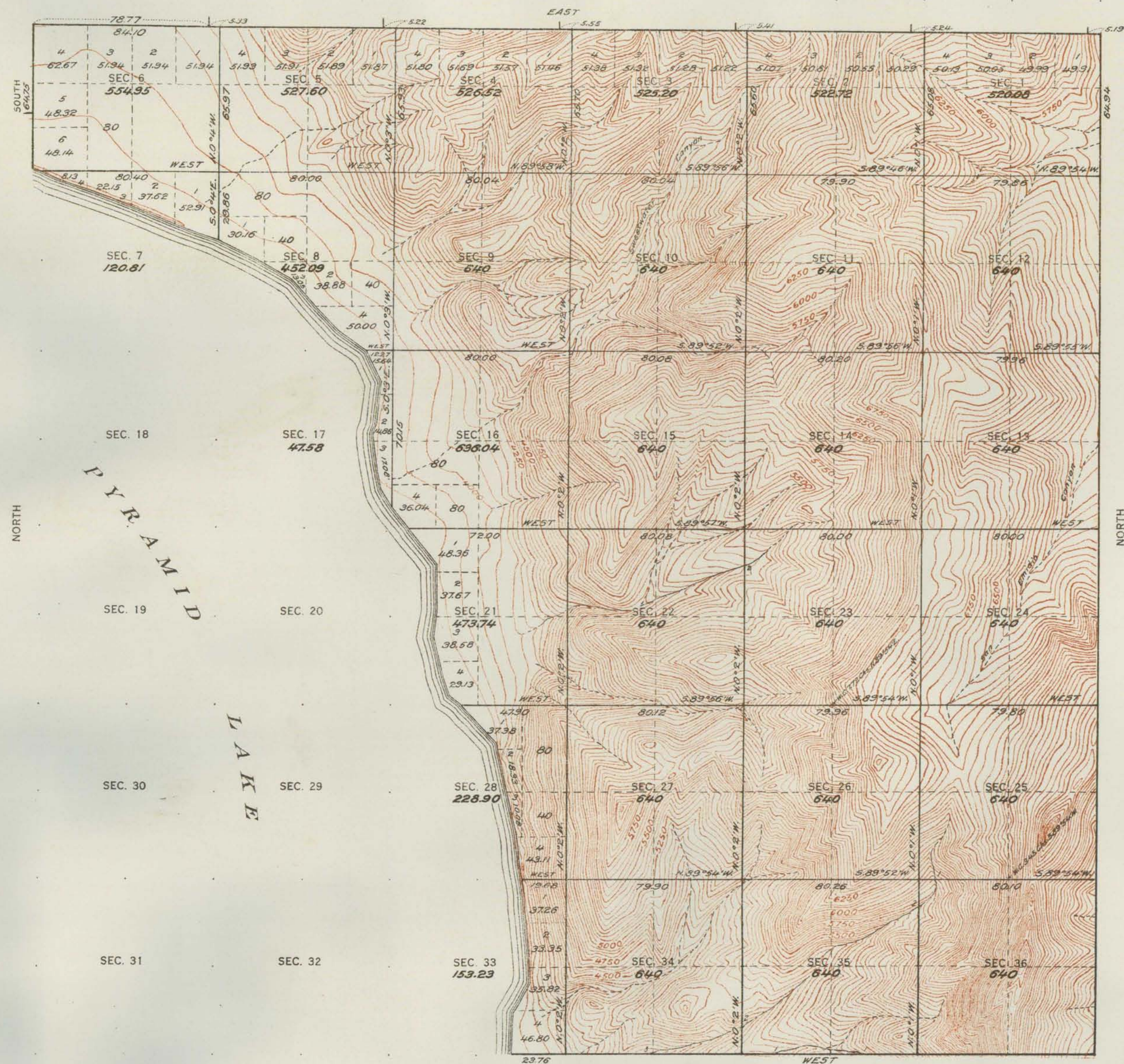


FRACTIONAL TOWNSHIP NO. 27 NORTH, RANGE NO. 22 EAST OF MOUNT DIABLO MERIDIAN, NEVADA.
PYRAMID LAKE INDIAN RESERVATION



Contour interval 50 feet

Note: Curved lines or contours, are lines of equal elevation, and represent approximately the form of the earth's surface and the altitude above sea level.

SURVEYS DESIGNATED	BY WHOM SURVEYED	WHEN SURVEYED
STANDARD LINES		
TOWNSHIP	EARL G. HARRINGTON Transitman	JUNE 3, 17, 1912
SUBDIVISION	" " " "	" 17-28, "
MEANDER	" " " "	" 29, "
BOUNDARY		
CONNECTIONS		

A. F. DUNNINGTON, Topographer in charge. Instructions April 27, 1911.

TOTAL NUMBER OF ACRES 15529.46

THE ABOVE MAP, OF TOWNSHIP NO. 27 NORTH, RANGE NO. 22 EAST OF MOUNT DIABLO MERIDIAN, NEVADA, IS STRICTLY CONFORMABLE TO THE FIELD NOTES OF THE SURVEY THEREOF ON FILE IN THIS OFFICE, WHICH HAVE BEEN EXAMINED AND APPROVED

U. S. GENERAL LAND OFFICE

WASHINGTON, D. C.
MAY 15, 1913.

Frederick W. Bennett
Commissioner.