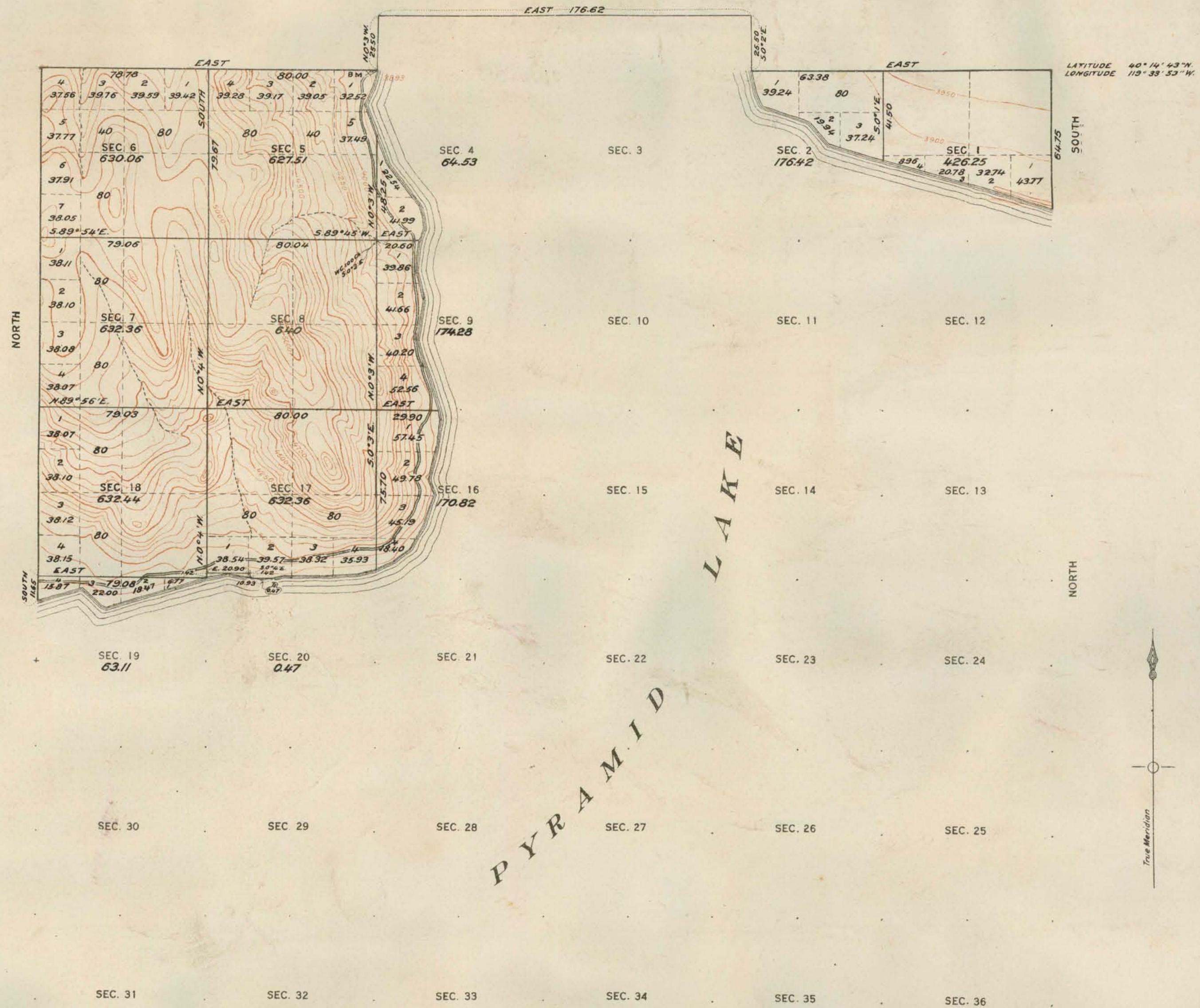


TOWNSHIP NO. 27 NORTH, RANGE NO. 21 EAST OF MOUNT DIABLO MERIDIAN, NEVADA.
PYRAMID LAKE INDIAN RESERVATION



SURVEYS DESIGNATED	BY WHOM SURVEYED	AMOUNT OF SURVEYS M. CHS. LKS.	WHEN SURVEYED
STANDARD LINES			
TOWNSHIP	BUY P. HARRINGTON		SEPT. 2, 21, 1911.
SUBDIVISION	" " "		" 22, "
MEANDER	" " "		" " "
BOUNDARY			
CONNECTIONS			

A. F. DUNNINGTON, Topographer in charge. Instructions April 27, 1911.

THE ABOVE MAP OF TOWNSHIP NO. 27 NORTH, RANGE NO. 21 EAST OF MOUNT DIABLO MERIDIAN, NEVADA, IS STRICTLY CONFORMABLE TO THE FIELD NOTES OF THE SURVEY THEREOF ON FILE IN THIS OFFICE, WHICH HAVE BEEN EXAMINED AND APPROVED

U. S. GENERAL LAND OFFICE

WASHINGTON, D. C.
MAY 15, 1913

Ed. Bennett
Commissioner.