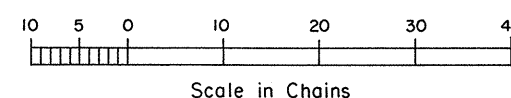
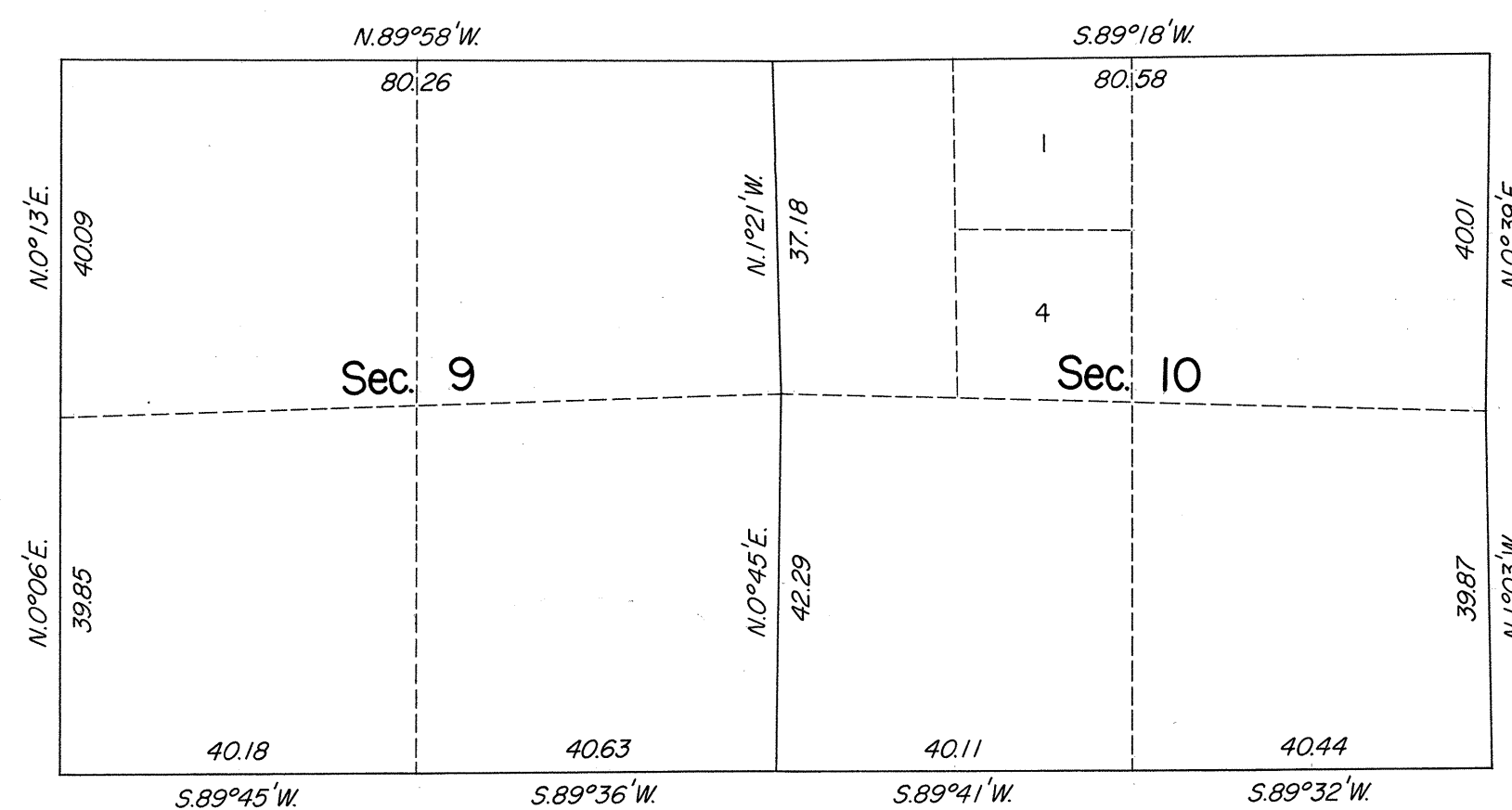
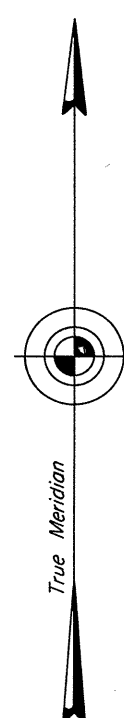


ORIGINAL

OFFICIALLY FILED
NEVADA STATE OFFICE
10:00 A.M., May 14, 1978

TOWNSHIP 27 NORTH, RANGE 18 EAST, OF THE MOUNT DIABLO MERIDIAN, NEVADA
SUPPLEMENTAL PLAT OF SECTIONS 9 AND 10

This plat showing a correction of the lotting in secs. 9 and 10, T. 27 N., R. 18 E., Mount Diablo Meridian, Nevada, is based on the plat approved February 8, 1881 and the plat accepted May 27, 1976.



UNITED STATES DEPARTMENT OF THE INTERIOR
BUREAU OF LAND MANAGEMENT
Washington, D.C. May 8, 1978

This plat, showing amended lottings, is based upon the official records, and having been correctly prepared in accordance with the regulations of this Bureau, is hereby accepted.

For the Director

Bernard W. Fisher
Chief, Division of Cadastral Survey