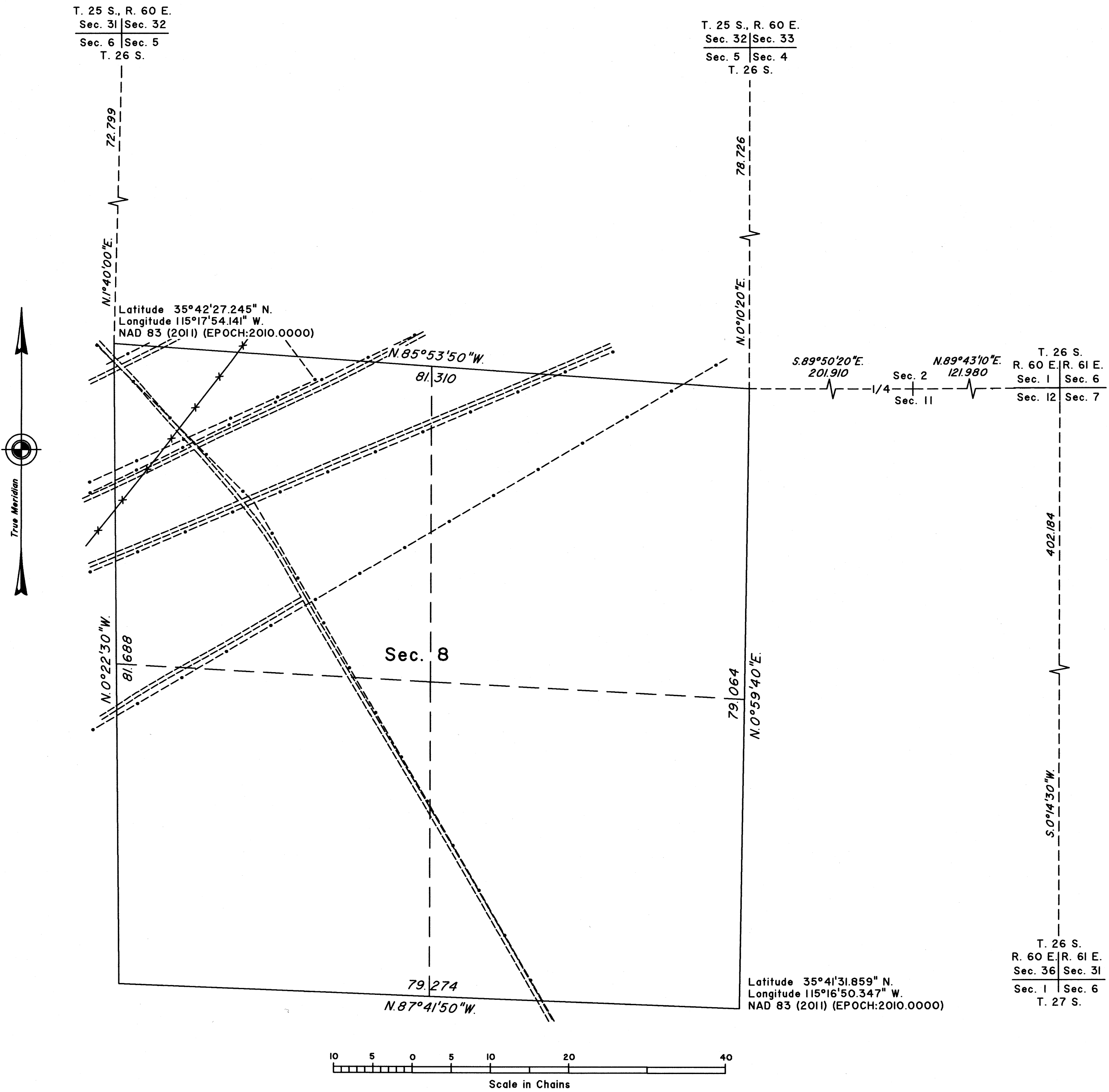


TOWNSHIP 26 SOUTH, RANGE 60 EAST, OF THE MOUNT DIABLO MERIDIAN, NEVADA
DEPENDENT RESURVEY



A history of surveys is contained in the field notes.

This plat represents the dependent resurvey of a portion of the subdivisional lines, designed to restore the corners in their true original locations according to the best available evidence, Township 26 South, Range 60 East, Mount Diablo Meridian, Nevada.

Except as indicated hereon, the lottings and areas are as shown on the plat approved February 23, 1884.

Survey executed by Brandon G. Courtright and Kelly R. Totten, Cadastral Surveyors, beginning December 7, 2015 and completed May 10, 2023, pursuant to Special Instruction dated December 1, 2015 for Group No. 954, Nevada.

UNITED STATES DEPARTMENT OF THE INTERIOR
BUREAU OF LAND MANAGEMENT

Reno, Nevada June 24, 2025

This plat is strictly conformable to the approved field notes, and the survey, having been correctly executed in accordance with the requirements of law and the regulations of this Bureau, is hereby accepted.

For the Director

Clarence D. Strickland
Chief Cadastral Surveyor for Nevada