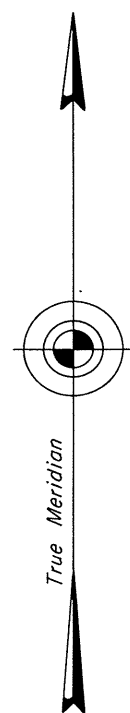


ORIGINAL

TOWNSHIP 26 NORTH, RANGE 55 EAST, OF THE MOUNT DIABLO MERIDIAN, NEVADA
DEPENDENT RESURVEY



Mean Magnetic Declination
17° E.

Surveyed by

E. Voigt, C. P. Devine and C. F. Strasser

in 1936

Surveyed by

A. J. Hatch and J. C. Smyles

in 1871-1872

A history of surveys is contained in the field notes.

This plat represents the dependent resurvey of the Fifth Standard Parallel North, through a portion of R. 55 E. and a portion of the east boundary (Ruby Valley Guide Meridian) designed to restore the corners in their true original locations according to the best available evidence, T. 26 N., R. 55 E., Mount Diablo Meridian, Nevada.

Survey executed by Robert A. Pratt, Cadastral Surveyor, beginning November 8, 1979 and completed November 28, 1979, pursuant to Special Instructions dated September 19, 1979, for Group No. 577, Nevada.

UNITED STATES DEPARTMENT OF THE INTERIOR
BUREAU OF LAND MANAGEMENT
Denver, Colorado January 18, 1982

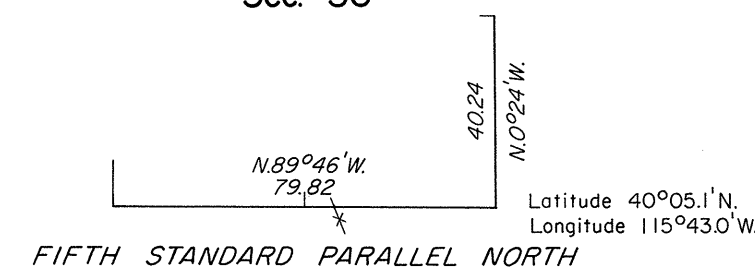
This plat is strictly conformable to the approved field notes, and the survey, having been correctly executed in accordance with the requirements of law and the regulations of this Bureau, is hereby accepted.

For the Director

Gay S. Spight

Acting Chief, Cadastral Survey
Examination and Approval Staff

Sec. 36



10 5 0 10 20 40 80
Scale in Chains