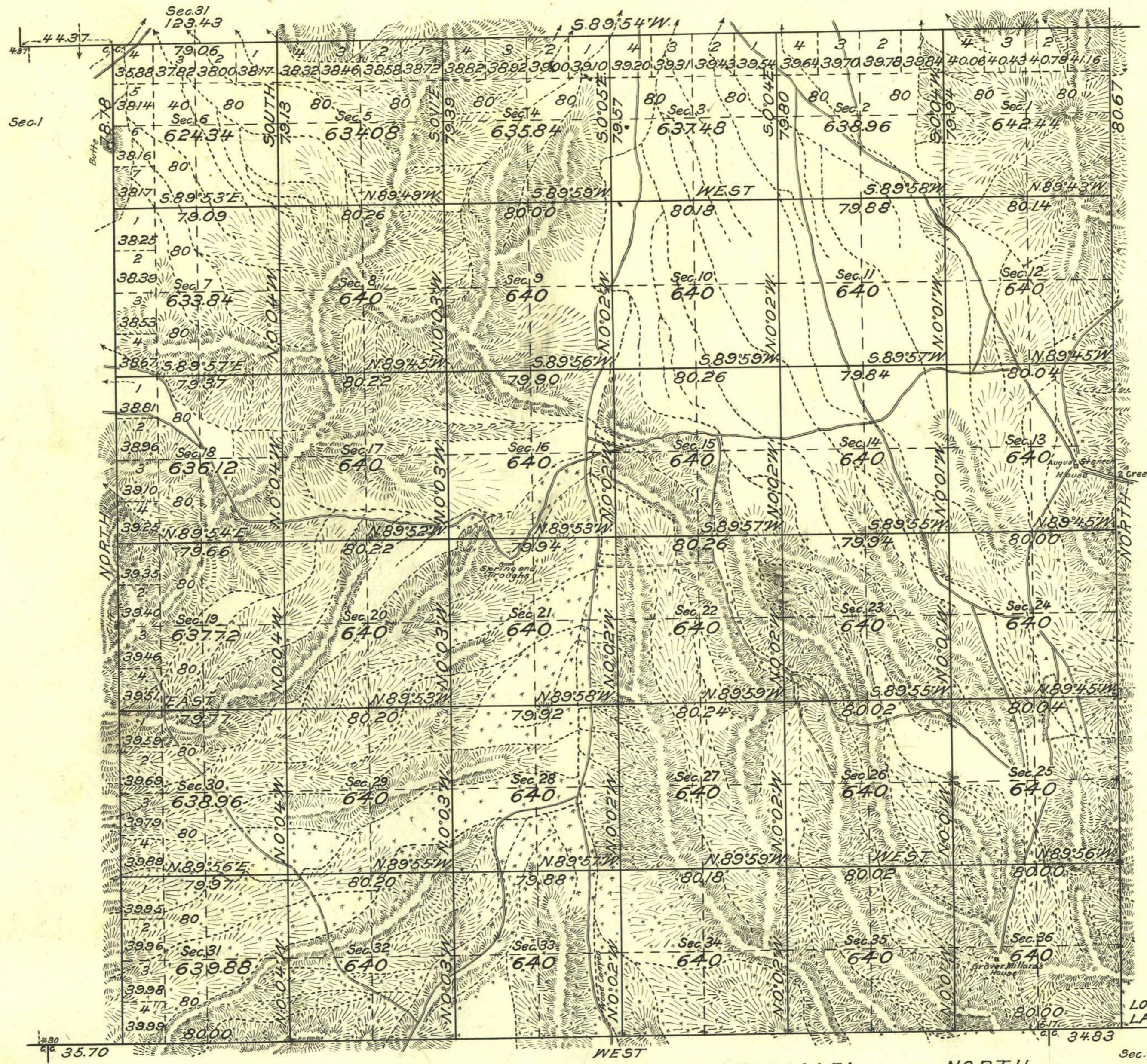


# TOWNSHIP N° 26 NORTH RANGE N° 46 EAST MOUNT DIABLO MERIDIAN NEVADA.



Scale: 40 Chains to an Inch.

Area Surveyed, **22999.66** Acres.

Mean Magnetic Declination,

LINES DESIGNATED	BY WHOM SURVEYED	GROUP NO	DATE	MILEAGE		WHEN SURVEYED	
				MLS.	CHS.	BEGUN	COMPLETED
Exteriors	Walter H. Good	109	April 4, 1923	17	778	Oct. 21, 1924	July 23, 1925
Subdivisional	" " "	"	" " "	59	775	July 10, 1925	" 28, "
Meander							
Miscellaneous							

Office of U.S. Supervisor of Surveys  
 Denver, Colorado, July 9, 1926  
 The above plat of Township No 26 North Range No 46 East of the Mount Diablo Meridian, Nevada is strictly conformable to the field notes of the survey thereof which have been examined and approved.

*Charles H. Pearson*  
 U.S. Supervisor of Surveys.

DEPARTMENT OF THE INTERIOR  
 GENERAL LAND OFFICE  
 Washington, D.C., November 12, 1926.  
 The survey represented by this plat having been correctly executed in accordance with the requirements of law and the regulations of this office, is hereby accepted.

*D. H. Powell*  
 Acting Assistant Commissioner.