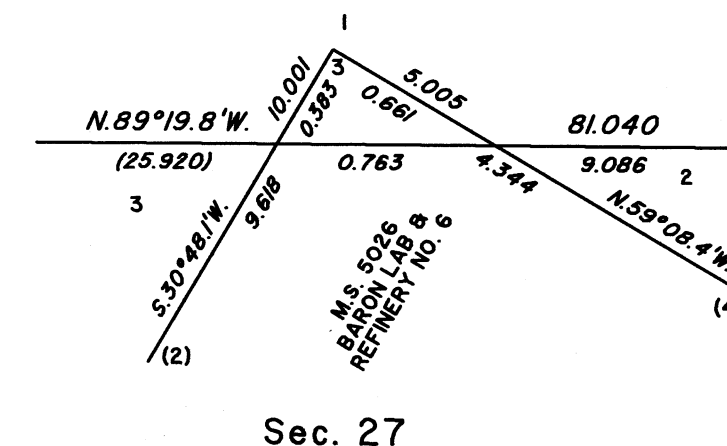
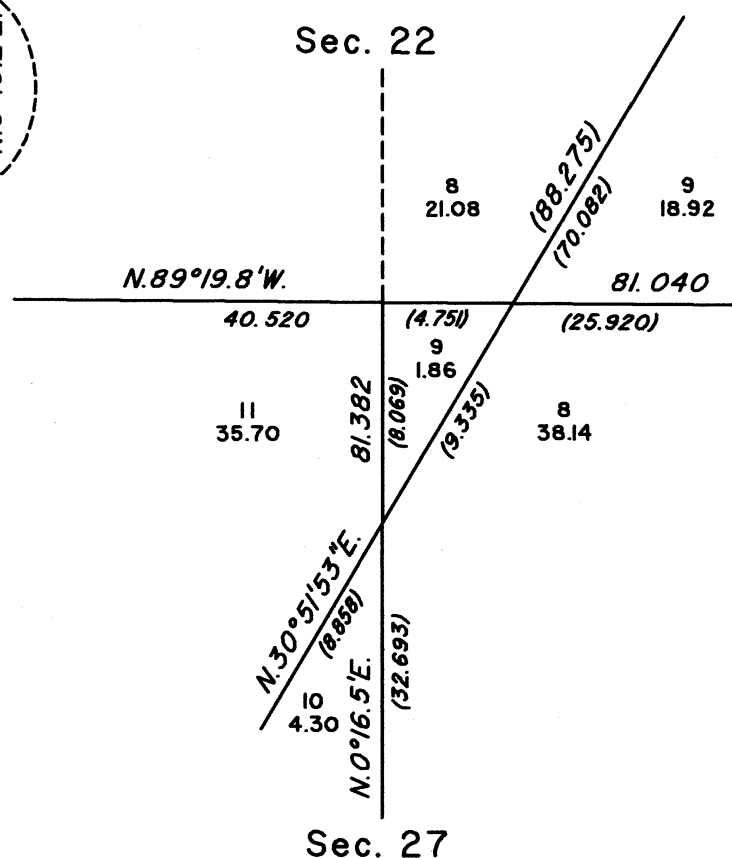
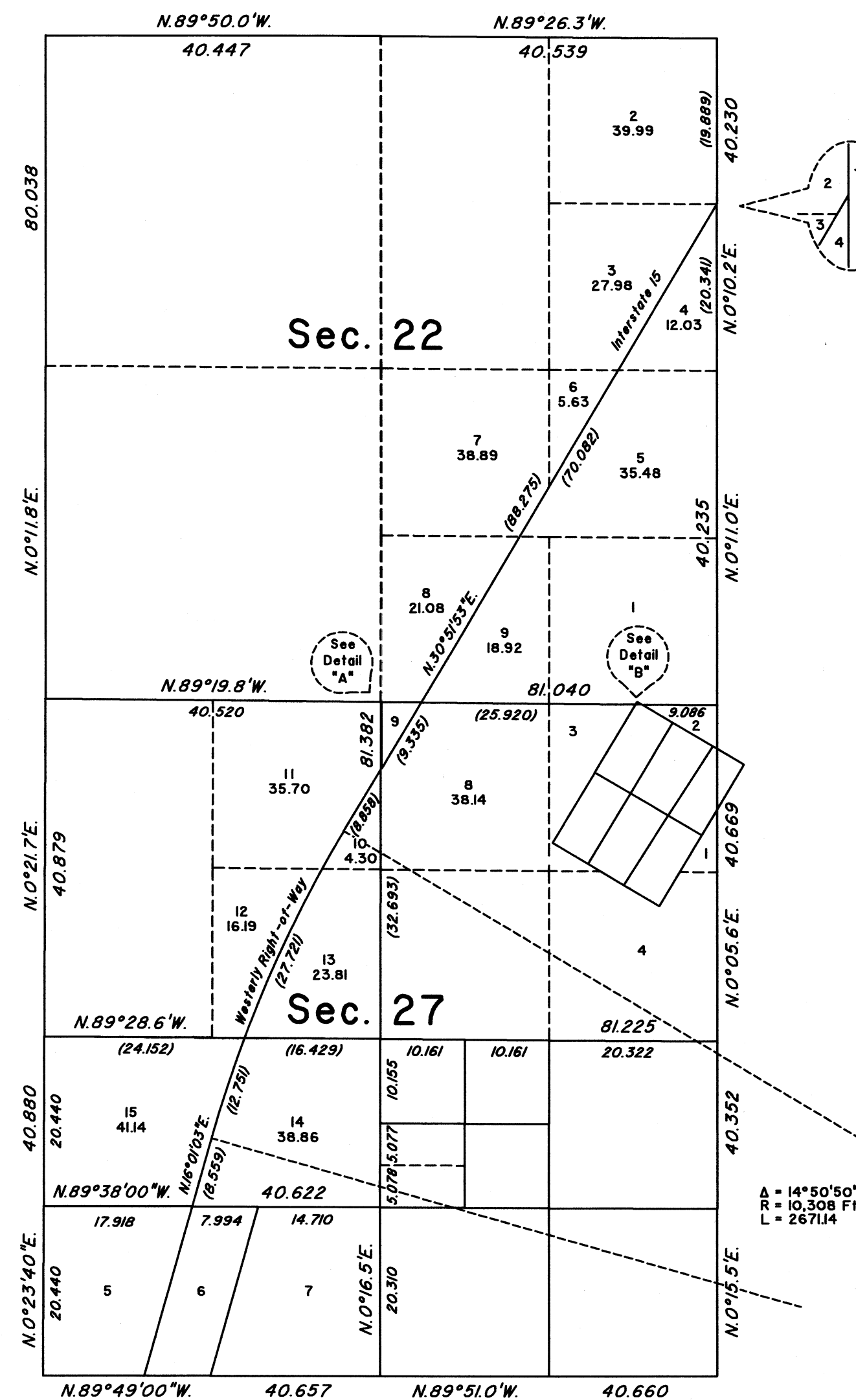


SUPPLEMENTAL PLAT OF SECTIONS 22 AND 27



Plat prepared under the direction of Michael O. Jones, Cadastral Surveyor, beginning December 10, 2024, and completed February 28, 2025, pursuant to Special Instructions dated December 10, 2024, and Assignment Instructions dated December 10, 2024, for Group No. 1021, Nevada.

The data shown in parentheses are derived by calculation.

For those surveyed lines not showing bearing and distances, refer to the plat approved February 6, 1884, the plat in 5 sheets accepted January 14, 1997, the plat accepted September 10, 2002, the field notes approved September 10, 2002, and the mineral survey records.

Except as shown hereon, the lottings and areas are as shown on the plat approved February 6, 1884, the plat in 5 sheets accepted January 14, 1997, and the plat accepted September 10, 2002.

UNITED STATES DEPARTMENT OF THE INTERIOR
BUREAU OF LAND MANAGEMENT

Reno, Nevada June 24, 2025

This plat, showing new lottings, is based upon the official records and, having been correctly prepared in accordance with the requirements of the law and the regulations of the Bureau, is hereby accepted.

For the Director

Clarence D. Strickland
Chief Cadastral Surveyor for Nevada

