

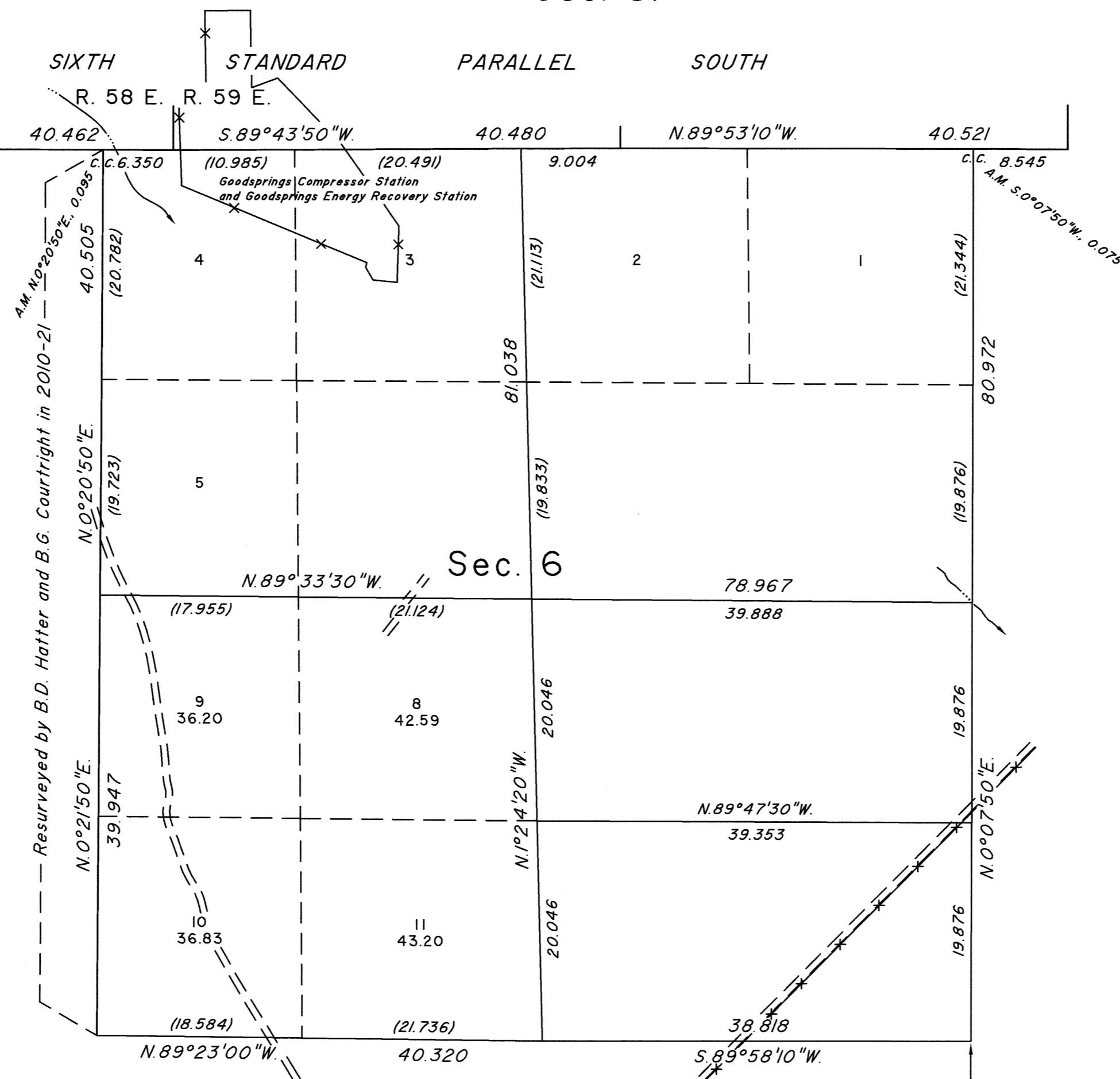
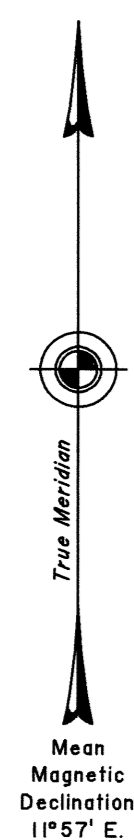
TOWNSHIP 25 SOUTH, RANGE 59 EAST, OF THE MOUNT DIABLO MERIDIAN, NEVADA

DEPENDENT RESURVEY AND SUBDIVISION

Sec. 36

Sec. 31

Latitude 35°48'32.921" N.
Longitude 115°25'20.643" W.
NAD 83 (2011) (EPOCH:2010.0000)



Latitude 35°47'40.085" N.
Longitude 115°23'50.327" W.
NAD 83 (2011) (EPOCH:2010.0000)

A history of surveys is contained in the field notes.

This plat represents the dependent resurvey of the Sixth Standard Parallel South, through portions of Ranges 58 and 59 East, and a portion of the subdivisional lines designed to restore the corners in their true original locations according to the best available evidence and the subdivision of section 6, Township 25 South, Range 59 East, Mount Diablo Meridian, Nevada.

Except as indicated hereon, the lottings and areas are as shown on the plat approved February 6, 1884.

Survey executed by Brandon G. Courtright, Cadastral Surveyor, beginning December 3, 2015 and completed December 6, 2015, pursuant to Special Instructions dated December 1, 2015, for Group No. 954, Nevada.

UNITED STATES DEPARTMENT OF THE INTERIOR
BUREAU OF LAND MANAGEMENT

Reno, Nevada August 3, 2022

This plat is strictly conformable to the approved field notes, and the survey, having been correctly executed in accordance with the requirements of law and the regulations of this Bureau, is hereby accepted.

For the Director

Michael O. Hammer

Chief Cadastral Surveyor for Nevada

