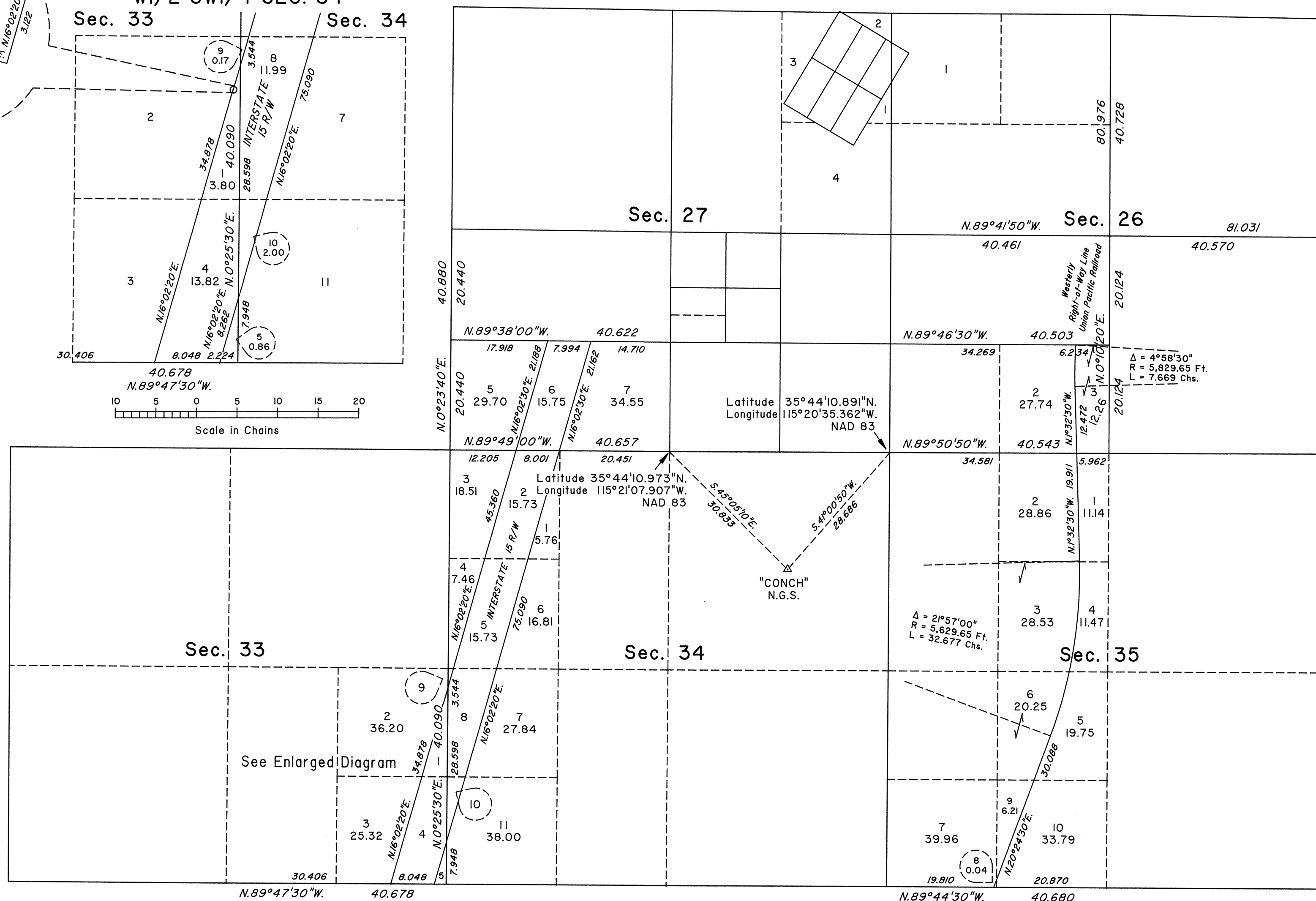
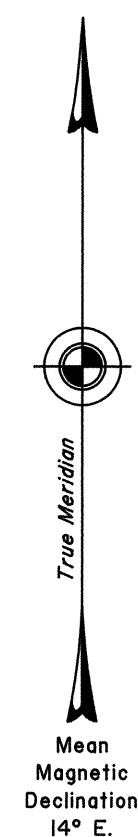
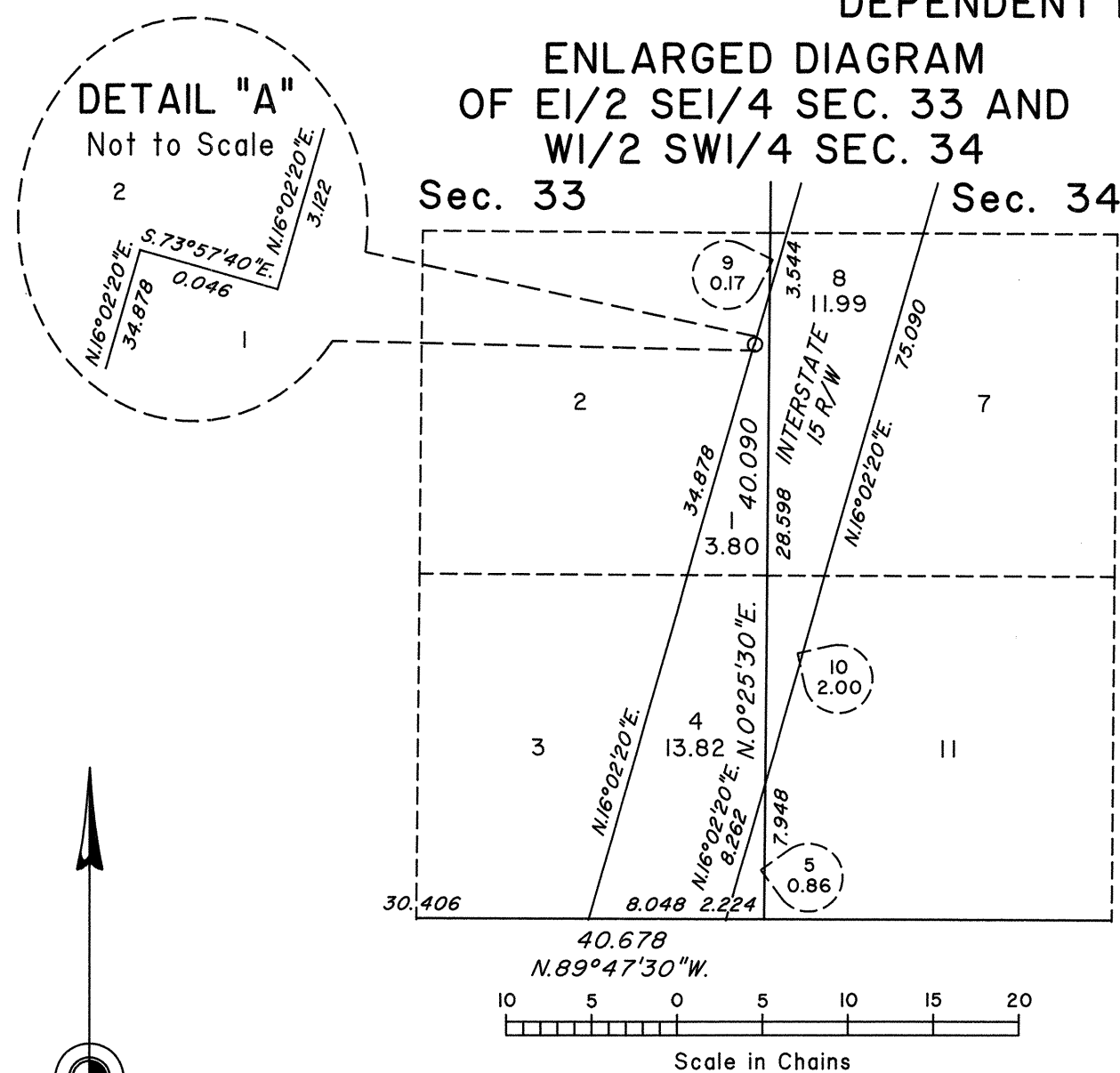


DEPENDENT RESURVEY, SUBDIVISION AND METES-AND-BOUNDS SURVEY

DETAIL "A"
Not to Scale



This plat represents the dependent resurvey of a portion of the south boundary and a portion of the subdivisional lines designed to restore the corners in their true original locations according to the best available evidence, and the subdivision of section 26 and further subdivision of section 27, and metes-and-bounds surveys of portions of the right-of-way lines of Interstate Highway No. 15 and the Union Pacific Railroad, Township 25 South, Range 59 East, Mount Diablo Meridian, Nevada.

Survey executed by Richard A. Zaninovich, Cadastral Surveyor, beginning January 9, 2001, and completed April 12, 2001, pursuant to Special Instructions dated January 5, 2001, and Amended Special Instructions dated August 23, 2002, for Group No. 797, Nevada.

Reno, Nevada September 10, 2002

This plat is strictly conformable to the approved field notes, and the survey, having been correctly executed in accordance with the requirements of law and the regulations of this Bureau, is hereby accepted.

For the Director

Robert M. Scruggs
Chief Cadastral Surveyor, Nevada

T.25S., R.59E., M.D.M.