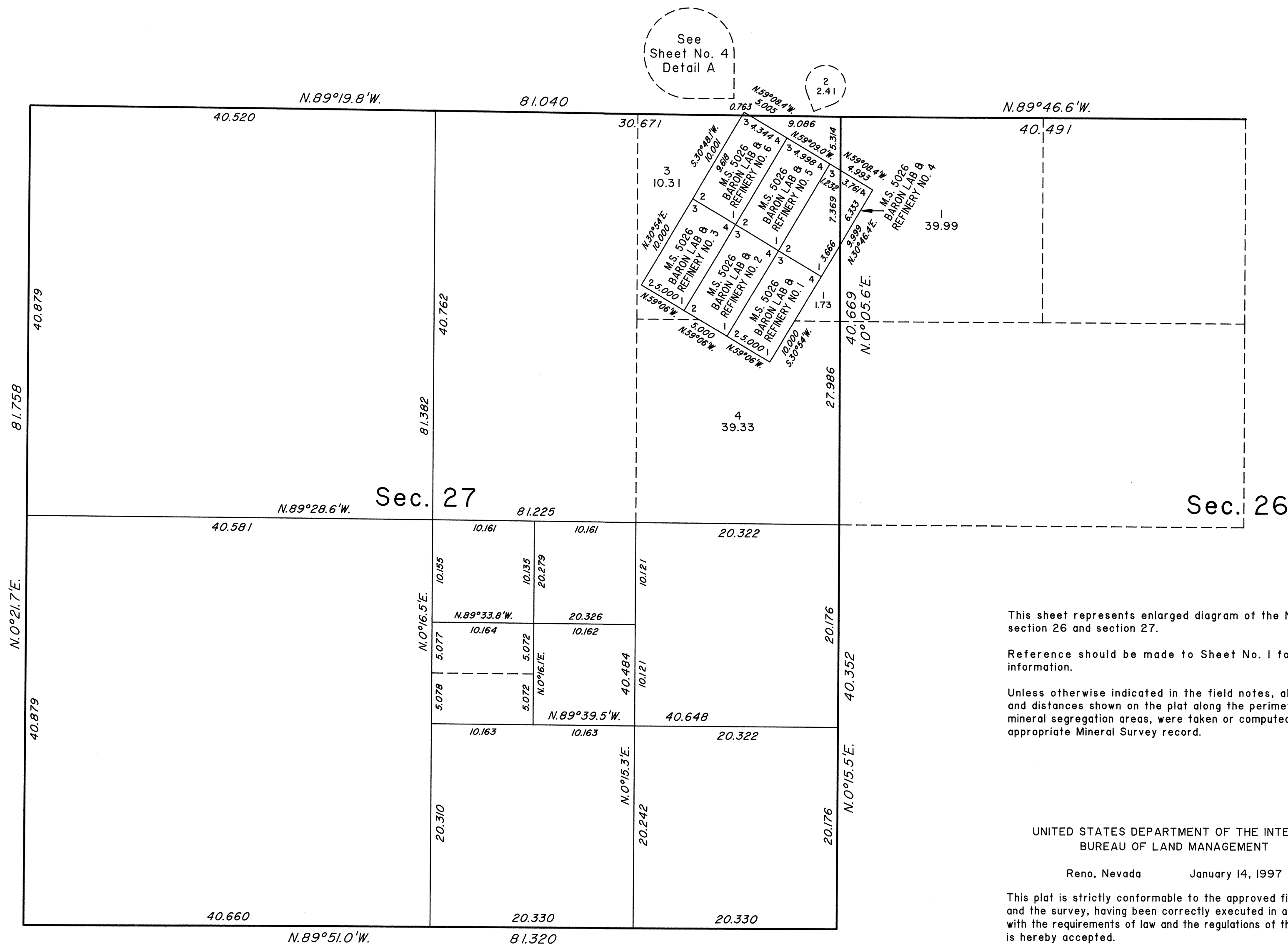
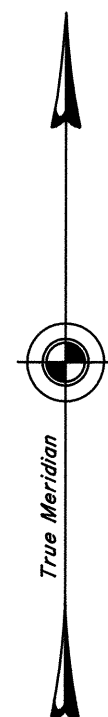


TOWNSHIP 25 SOUTH, RANGE 59 EAST, OF THE MOUNT DIABLO MERIDIAN, NEVADA
ENLARGED DIAGRAM OF NW 1/4 SEC. 26 AND SEC. 27



This sheet represents enlarged diagram of the NW 1/4 of section 26 and section 27.

Reference should be made to Sheet No. 1 for survey information.

Unless otherwise indicated in the field notes, all courses and distances shown on the plat along the perimeter of the mineral segregation areas, were taken or computed from the appropriate Mineral Survey record.

UNITED STATES DEPARTMENT OF THE INTERIOR
BUREAU OF LAND MANAGEMENT

Reno, Nevada January 14, 1997

This plat is strictly conformable to the approved field notes, and the survey, having been correctly executed in accordance with the requirements of law and the regulations of this Bureau, is hereby accepted.

For the Director

Robert H. Thompson

Acting Chief Cadastral Surveyor, Nevada

