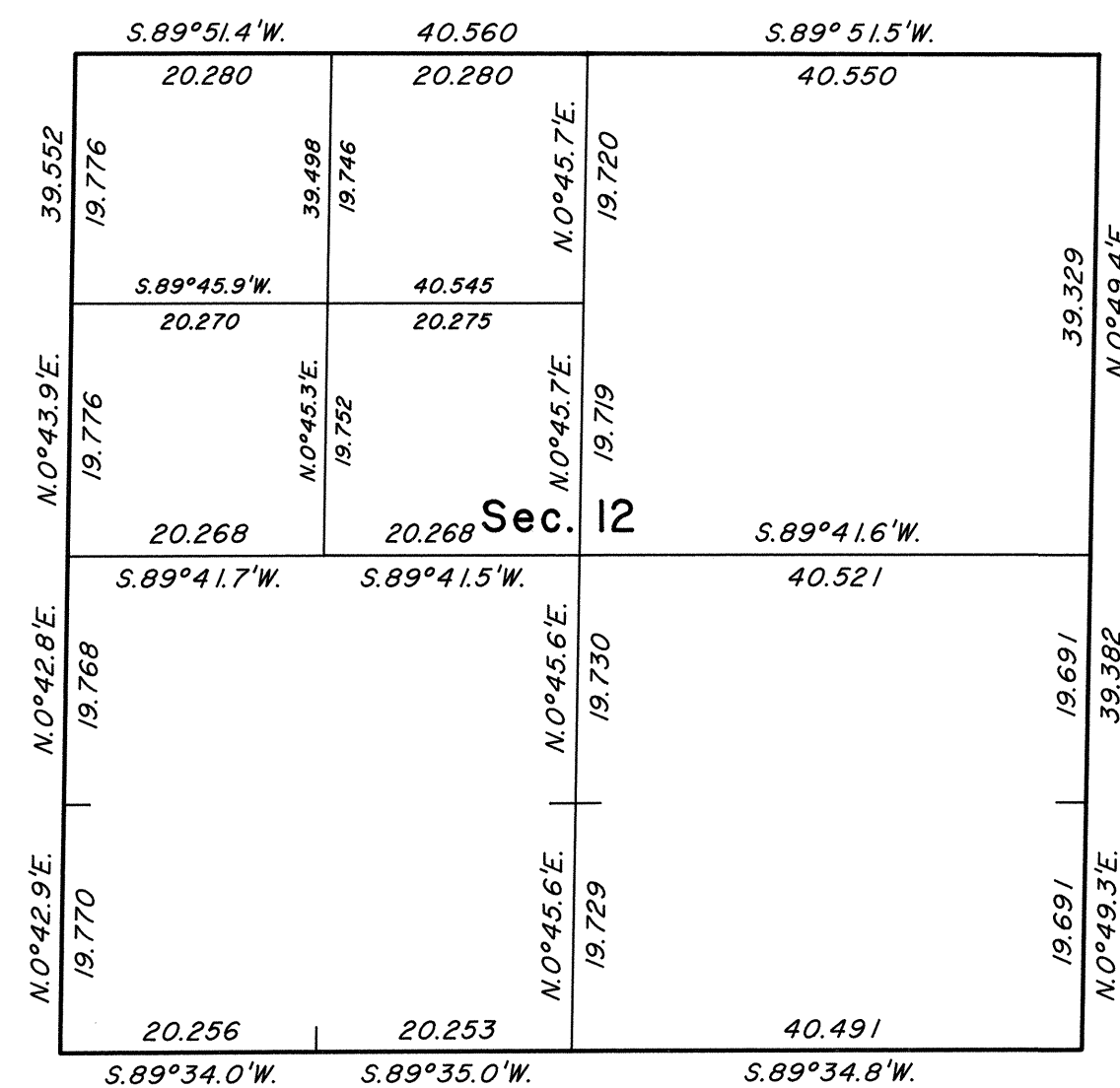
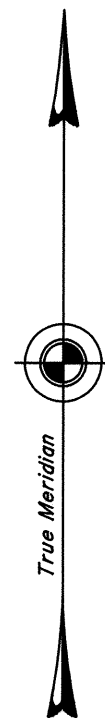


TOWNSHIP 25 SOUTH, RANGE 59 EAST, OF THE MOUNT DIABLO MERIDIAN, NEVADA
ENLARGED DIAGRAM OF SECTION 12

OFFICIALLY FILED
NEVADA STATE OFFICE
at 10:00 AM on January 16, 1997



This sheet represents enlarged diagram of section 12.
Reference should be made to Sheet No. 1 for survey information.

UNITED STATES DEPARTMENT OF THE INTERIOR
BUREAU OF LAND MANAGEMENT

Reno, Nevada January 14, 1997

This plat is strictly conformable to the approved field notes, and the survey, having been correctly executed in accordance with the requirements of law and the regulations of this Bureau, is hereby accepted.

For the Director

Robert H. Thompson

Acting Chief Cadastral Surveyor, Nevada

