

N 74° 34' 50" E  
(4) 10.156  
M.S. 4168

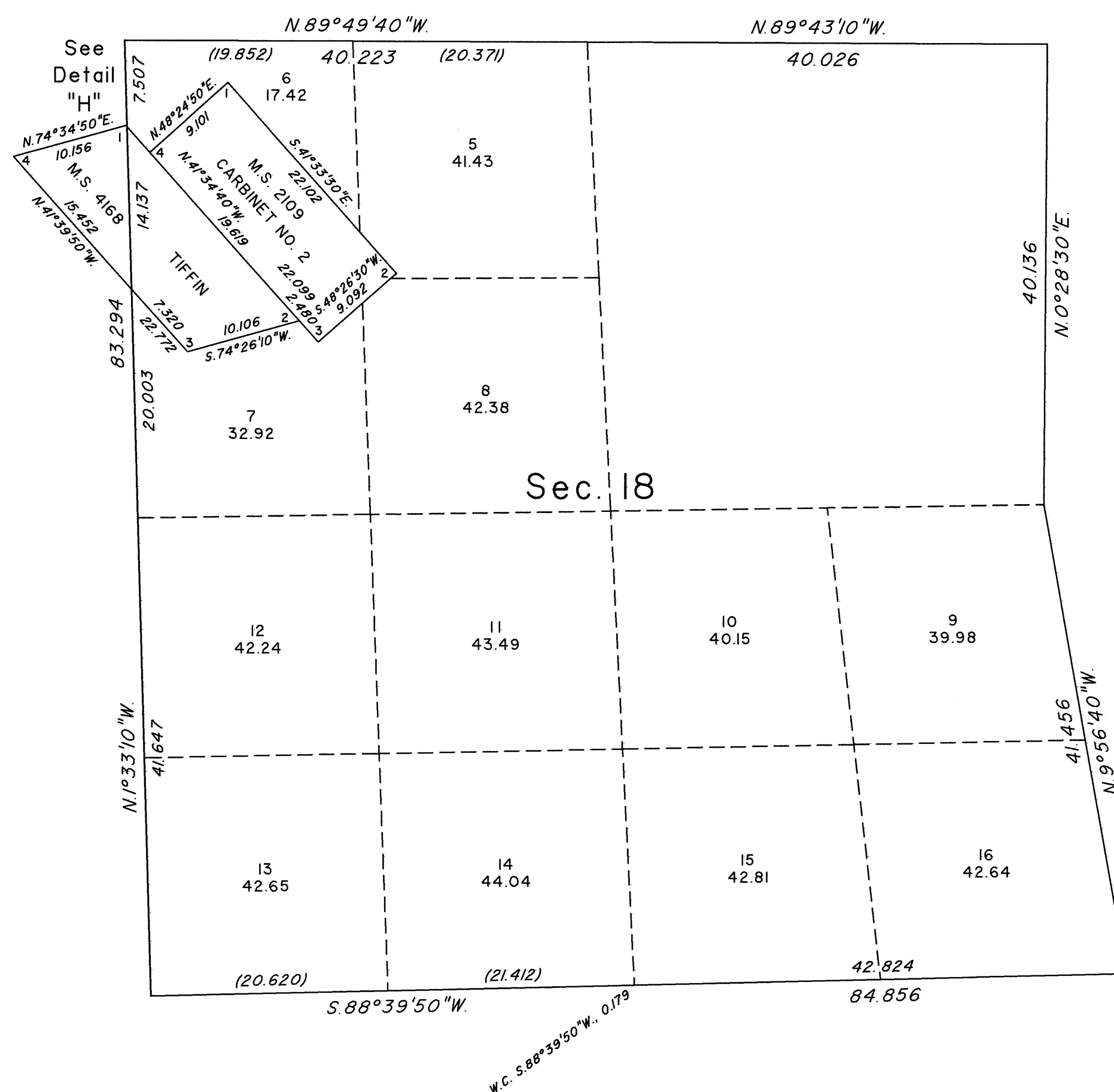
N 0° 33' 10" W 1.048

S 41° 34' 50" E  
3.109  
2.961

N 48° 24' 50" E 9.101 (1)  
M.S. 2109  
CARBINET NO.

TIFFIN

(2) (3)



For the Director

Mahmud o Hameer

Chief Cadastral Surveyor for Nevada

