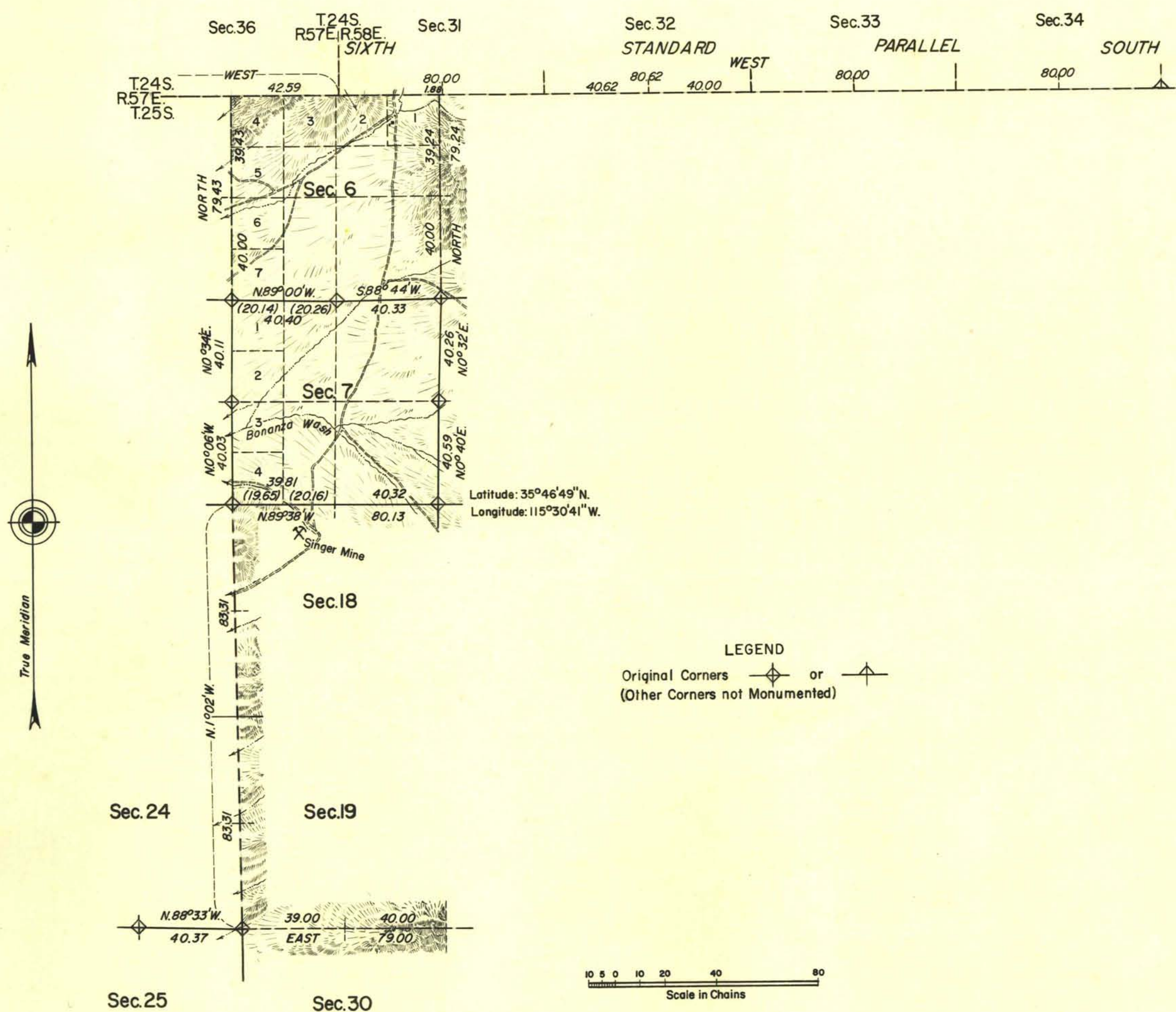


TOWNSHIP 25 SOUTH, RANGE 58 EAST, OF THE MOUNT DIABLO MERIDIAN, NEVADA.

RETRACEMENT AND PARTIAL DEPENDENT RESURVEY



The Sixth Standard Parallel South along the north boundary of this township was surveyed by Brunt and Proctor in 1881. The east, west, and south boundaries and the subdivisional lines were surveyed by C. A. Magee in 1883.

This plat represents a retracement and partial dependent resurvey of a portion of the west boundary and a portion of the subdivisional lines of T. 25 S., R. 58 E., Mount Diablo Meridian, Nevada, designed to restore the corners in their original locations according to the best available evidence. Areas are as shown on plat approved February 6, 1884. Broken lines and related data shown on this plat represent retracement data only, for the purpose of showing the relationship between identified corners in this township and T. 24 S., R. 58 E. See field notes for further details.

Survey executed by Carl S. Swanholm, April 7 to 14, 1932 under special instructions dated April 4, 1930, for Group 166, Nevada.

Topography taken from U. S. Geological Survey quadrangle "Goodsprings".

UNITED STATES DEPARTMENT OF THE INTERIOR
BUREAU OF LAND MANAGEMENT
Washington, D. C. November 9, 1956

This plat is strictly conformable to the approved field notes, and the survey, having been correctly executed in accordance with the requirements of law and the regulations of this Bureau, is hereby accepted.

For the Director

Earl S. Harrington

Cadastral Engineering Staff Officer

2495-a

T. 25 S., R. 58 E.