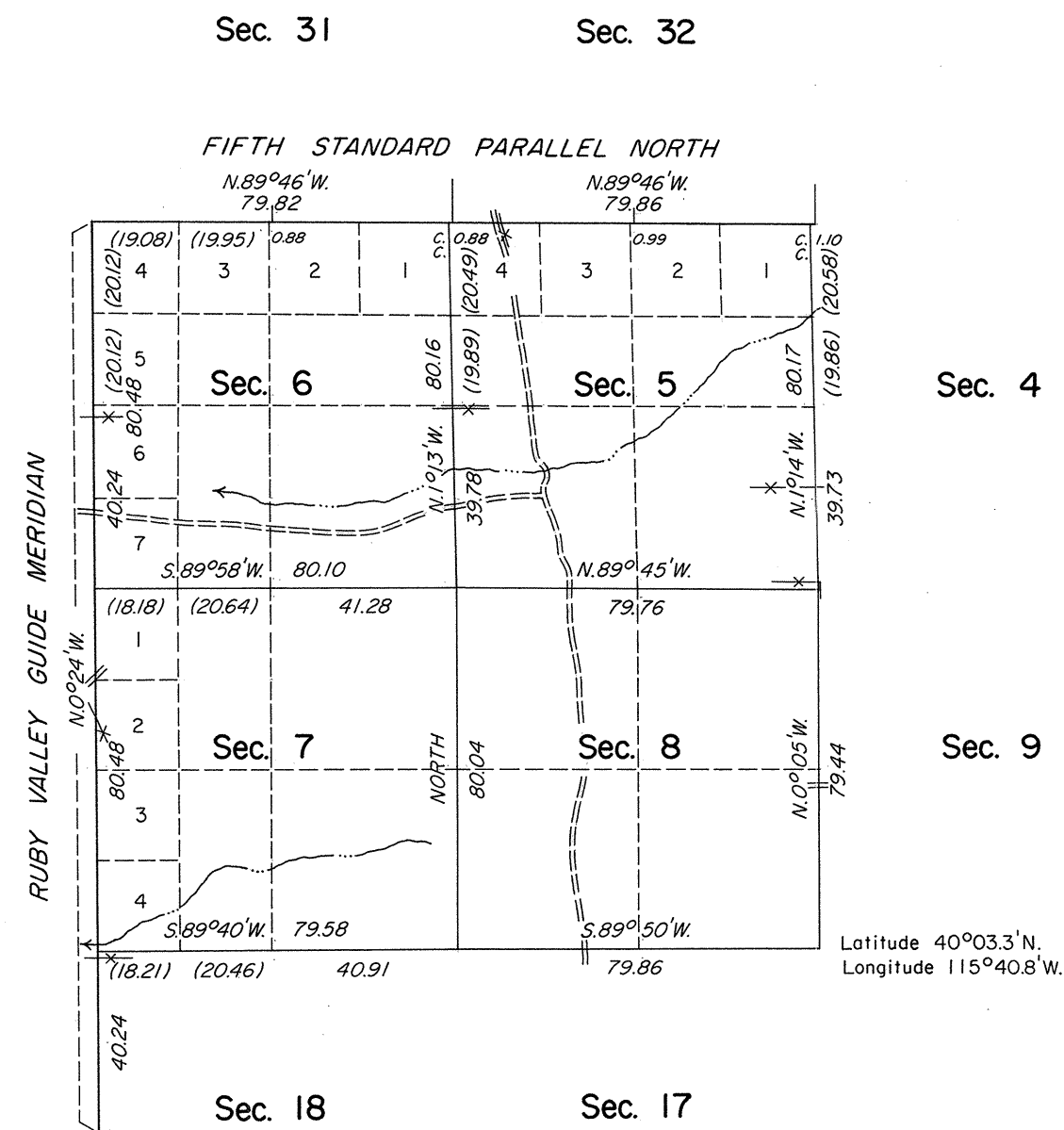


ORIGINAL

OFFICIALLY FILED
NEVADA STATE OFFICE
10:00 AM FEB 16, 1982

TOWNSHIP 25 NORTH, RANGE 56 EAST, OF THE MOUNT DIABLO MERIDIAN, NEVADA
DEPENDENT RESURVEY



A history of surveys is contained in the field notes.

This plat represents the dependent resurvey of the Fifth Standard Parallel North, through a portion of R. 56 E. and a portion of the west boundary (Ruby Valley Guide Meridian) and a portion of the subdivisional lines designed to restore the corners in their true original locations according to the best available evidence, T. 25 N., R. 56 E., Mount Diablo Meridian, Nevada.

The lottings and areas are as shown on the plat approved May 20, 1872.

Survey executed by Robert A. Pratt, Cadastral Surveyor, beginning November 8, 1979 and completed November 28, 1979, pursuant to Special Instructions dated September 19, 1979, for Group No. 577, Nevada.

Surveyed by

A. J. Hatch and J. C. Smyles

in 1871-1872

UNITED STATES DEPARTMENT OF THE INTERIOR
BUREAU OF LAND MANAGEMENT
Denver, Colorado January 18, 1982

This plat is strictly conformable to the approved field notes, and the survey, having been correctly executed in accordance with the requirements of law and the regulations of this Bureau, is hereby accepted.

For the Director

Gary S. Speight

Acting Chief, Cadastral Survey
Examination and Approval Staff

Scale in Chains

