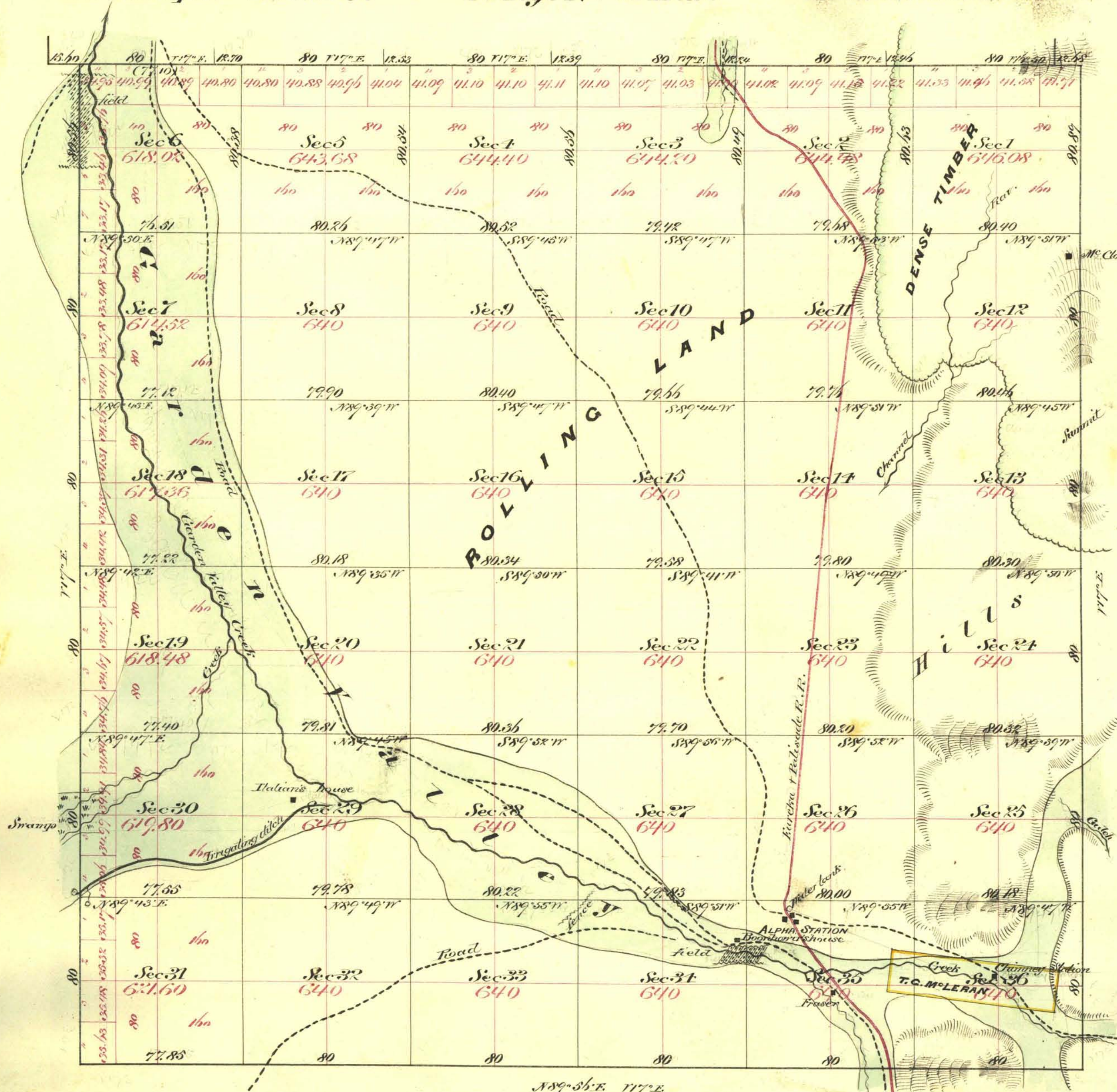


Township N^o 25 North

Range N^o 51 East

Mount Diablo Meridian



Aggregate Area of Public Land Surveyed 22,932.62 Acres

Commenced Dec. 27th 1879
Completed March 8th "

Lot colored yellow is a desert land location

Subdivision lines not otherwise noted run with Variation 17° East.

Surveys designated	By whom Surveyed	Date of Contract	Am't. of Surveys	When Surveyed	Acres
Township lines	Barker + Bridges	Jan. 6 th 1879	33 - 76 - 40	1879	38
Subdivisions	"	"	89 - 69 - 46	Febr Mar	"
Conveyance	"	"	62 - 32	"	"

The above plat of Township N. 25 North of Range N. 51 East Mount Diablo Meridian is shown conformable to the field notes of the surveys thereof on file in this office which have been examined and approved
U.S. Surv. Genl. Office
Virginia City, Nev.
July 13th 1879

C. S. Paow
U.S. Surv. Genl. Nev.