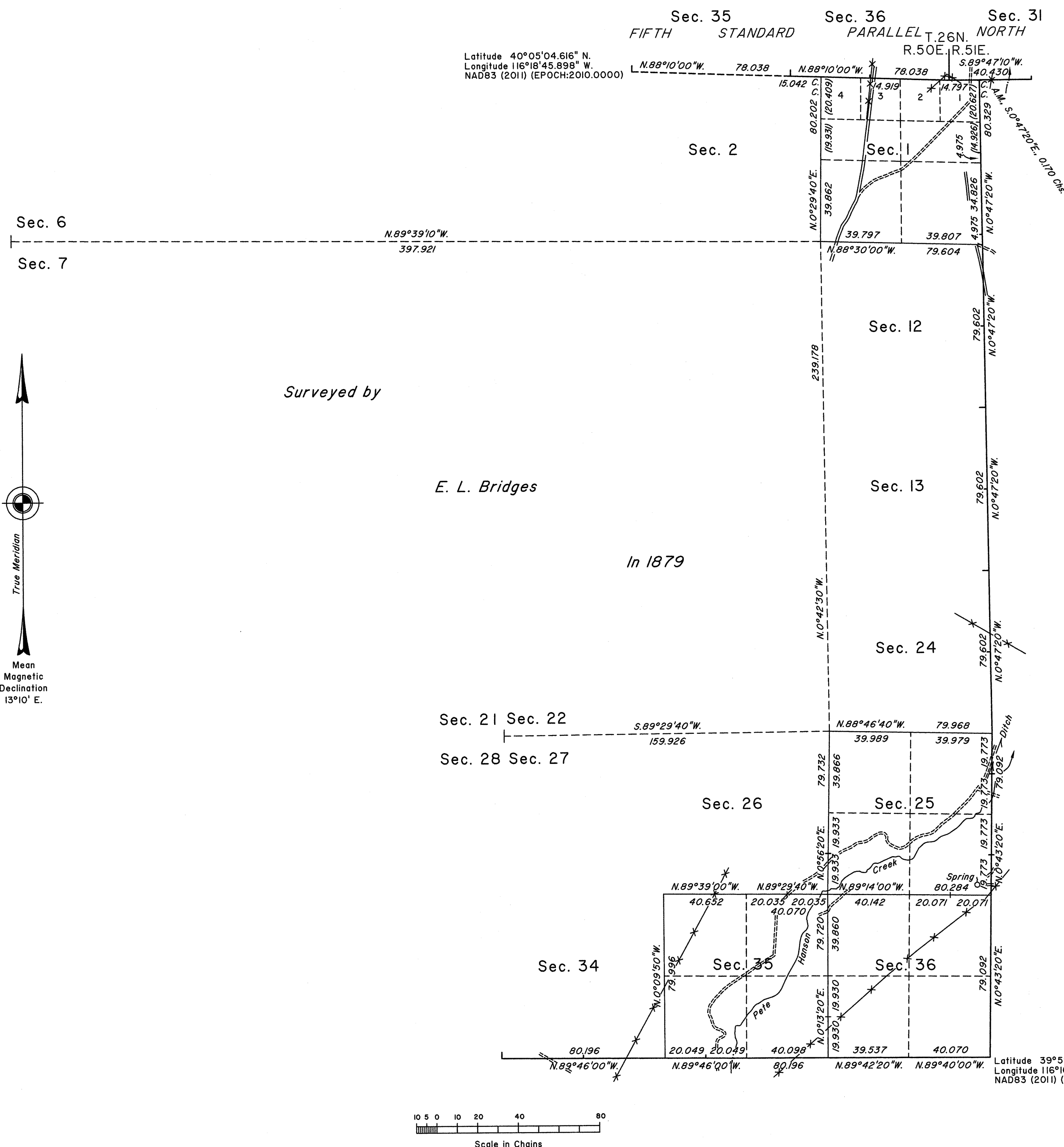


# TOWNSHIP 25 NORTH, RANGE 50 EAST, OF THE MOUNT DIABLO MERIDIAN, NEVADA

## DEPENDENT RESURVEY



A history of surveys is contained in the field notes.

A dependent resurvey of the Fifth Standard Parallel North through a portion of Range 51 East and the east boundary was executed concurrently under Township 25 North, Range 51 East, of this same Group.

This plat represents the dependent resurvey of the Fifth Standard Parallel North through a portion of Range 50 East, a portion of the south boundary and a portion of the subdivisional lines designed to restore the corners to their true original locations according to the best available evidence, Township 25 North, Range 50 East, Mount Diablo Meridian, Nevada.

Except as indicated hereon, the lottings and areas are as shown on the plat approved May 13, 1879.

Survey executed by Joseph J. Johnson, Cadastral Surveyor, beginning May 23, 2013 and completed November 11, 2013, pursuant to Special Instructions dated April 29, 2013, Supplemental Special Instructions dated June 4, 2013, and Supplemental Special Instructions dated July 22, 2013, for Group No. 924, Nevada.

UNITED STATES DEPARTMENT OF THE INTERIOR  
BUREAU OF LAND MANAGEMENT

Reno, Nevada September 29, 2014

This plat is strictly conformable to the approved field notes, and the survey, having been correctly executed in accordance with the requirements of law and the regulations of this Bureau, is hereby accepted.

For the Director

*David D. Mota*

Chief Cadastral Surveyor for Nevada