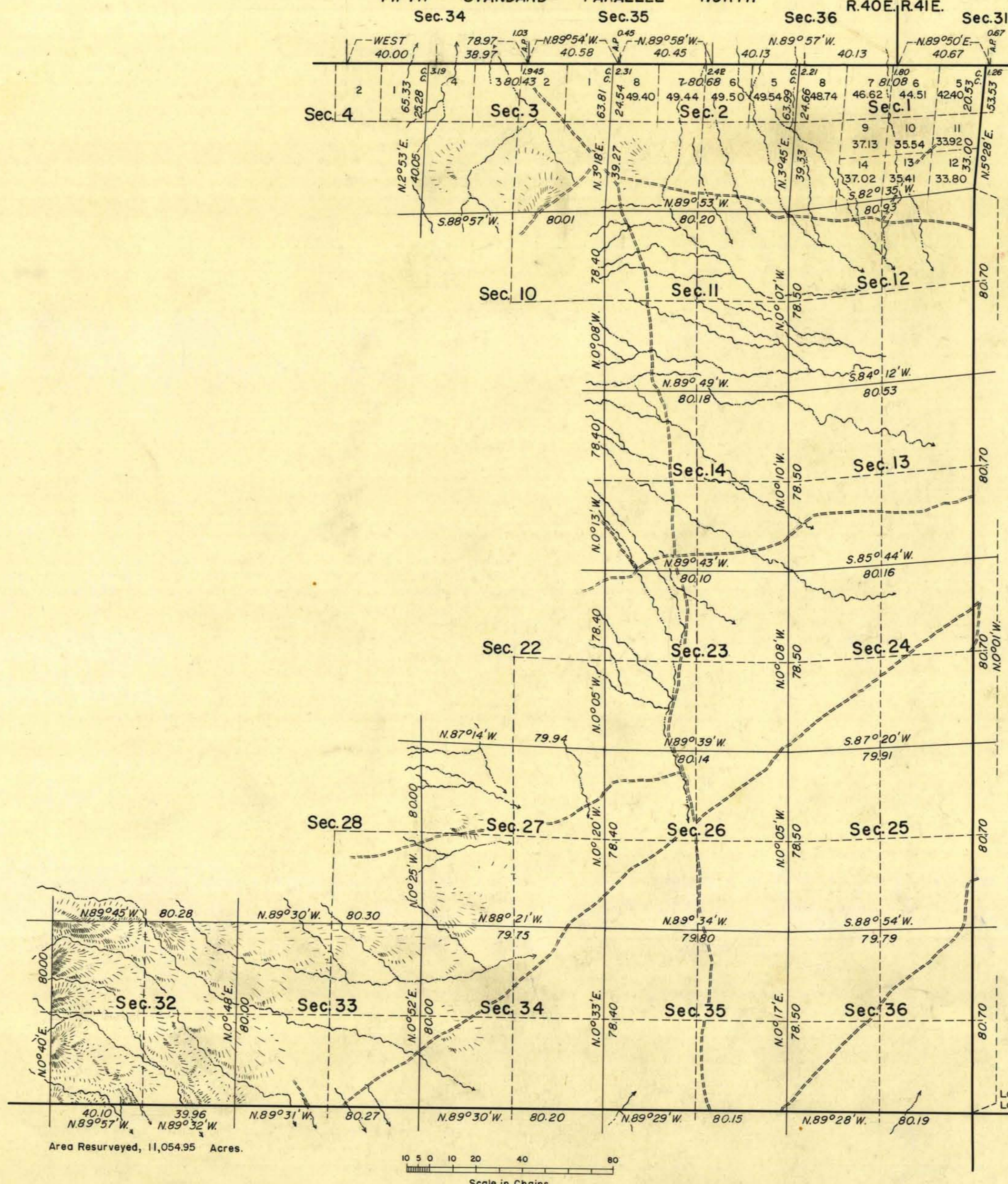


TOWNSHIP 25 NORTH, RANGE 40 EAST, OF THE MOUNT DIABLO MERIDIAN, NEVADA.

DEPENDENT RESURVEY

FIFTH STANDARD PARALLEL NORTH

T.26N.
R.40E., R.41E.



Mean Magnetic Declination,
17° 30' E.

This plat represents a dependent resurvey of a portion of the subdivisional lines of T. 25 N., R. 40 E., Mount Diablo Meridian, Nevada, designed to restore the corners in their true original locations according to the best available evidence; the areas are as shown on the plat approved May 8, 1876 except as shown hereon. History of earlier surveys is set forth in the field note record.

Surveys shown hereon were executed by Lancel E. Bland, from May 19 to June 15, 1960, under special instructions, dated August 5, 1959, for Group 382, Nevada.

UNITED STATES
DEPARTMENT OF THE INTERIOR
BUREAU OF LAND MANAGEMENT

Latitude 39° 59' 23" N.
Longitude 117° 24' 52" W.

Washington, D.C. February 2, 1962

This plat is strictly conformable to the approved field notes, and the survey, having been correctly executed in accordance with the requirements of law and the regulations of this Bureau, is hereby accepted.

For the Director

Chief, Division of Engineering

1305-a

T25N, R40E

662