

TOWNSHIP 25 NORTH, RANGE 20 EAST, OF THE MOUNT DIABLO MERIDIAN, NEVADA

DEPENDENT RESURVEY

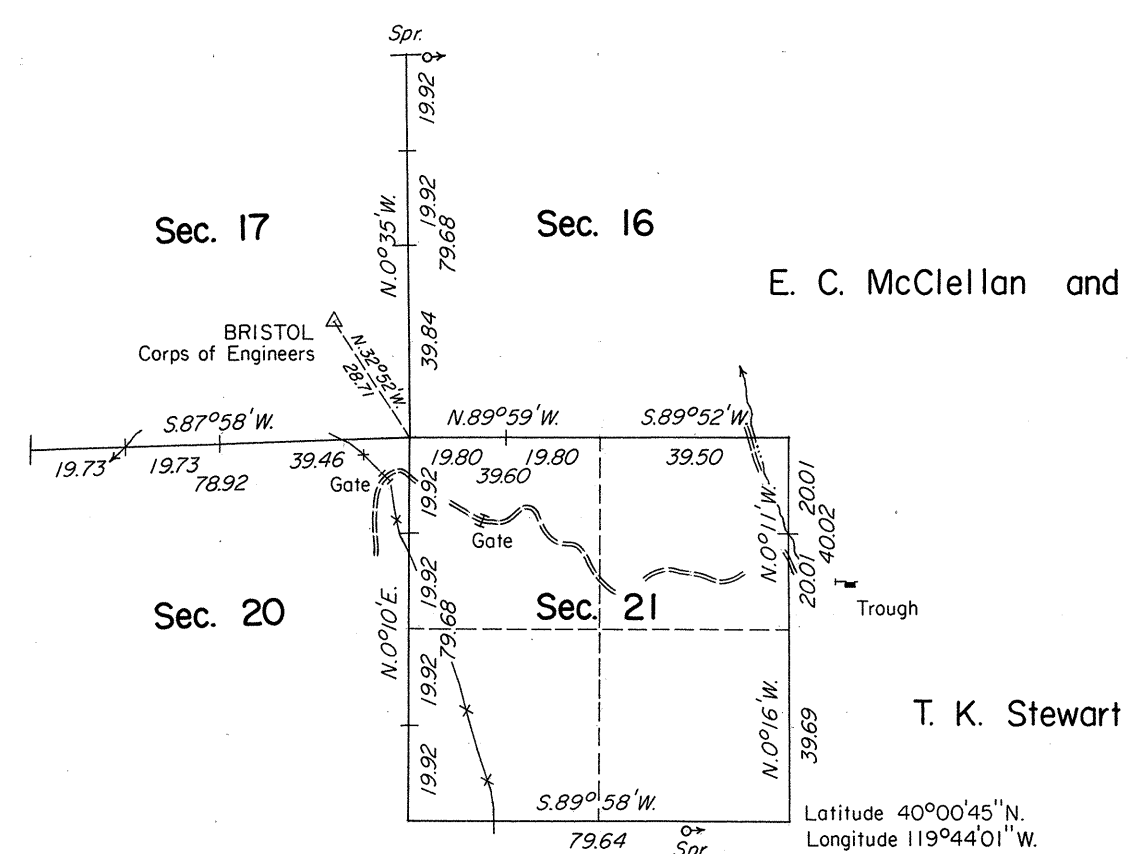
A history of surveys is contained in the field notes.

This plat represents a dependent resurvey of a portion of the subdivisional lines, designed to restore the corners in their true original locations according to the best available evidence, in T. 25 N., R. 20 E., Mount Diablo Meridian, Nevada.

Areas are as shown on the plat approved August 3, 1884.

Survey executed by Eldon W. Sibley, Cadastral Surveyor, October 21 to October 29, 1976, under Special Instructions dated October 20, 1976, for Group No. 546, Nevada.

Surveyed by



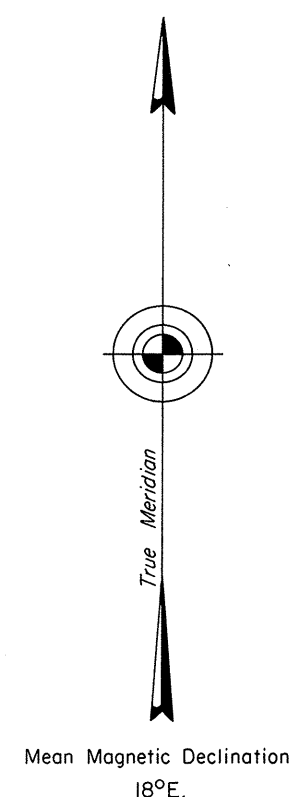
UNITED STATES DEPARTMENT OF THE INTERIOR
BUREAU OF LAND MANAGEMENT
Washington, D.C. September 14, 1977

This plat is strictly conformable to the approved field notes, and the survey, having been correctly executed in accordance with the requirements of law and the regulations of this Bureau, is hereby accepted.

For the Director

J. J. J. J.

Acting Chief, Division of Cadastral Survey



in 1884

