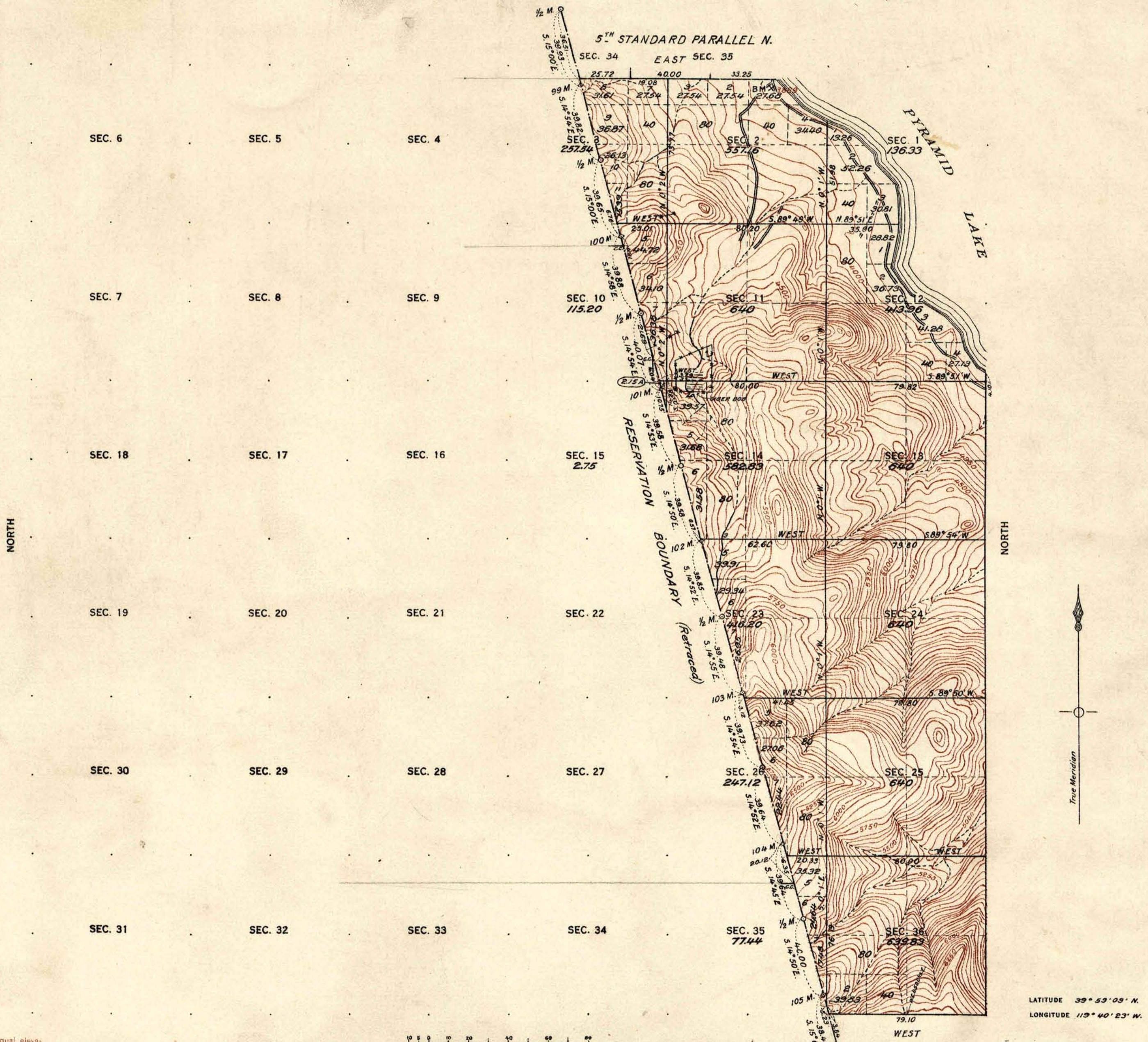


TOWNSHIP NO. 25 NORTH, RANGE NO 20 EAST OF MOUNT DIABLO MERIDIAN, NEVADA.
PYRAMID LAKE INDIAN RESERVATION



Contour interval 50 feet
Note: Curved lines or contours, are lines of equal elevation, and represent approximately the form of the earth's surface and the altitude above sea level.

Scale 40 Chains to an Inch

TOTAL NUMBER OF ACRES 6006.36

SURVEYS DESIGNATED	BY WHOM SURVEYED	AMOUNT OF SURVEYS		WHEN SURVEYED
		M.	LKS.	
STANDARD LINES	GUY P. HARRINGTON			AUGUST 20, 1911.
TOWNSHIP "	" " "			JULY 23, AUG. 14, 1911.
SUBDIVISION "	" " "			AUGUST 21-23, "
MEANDER "	" " "			" 23, "
BOUNDARY "	" " "			" 18, "
CONNECTIONS	" " "			" 21-23, "

A. F. DUNNINGTON, Topographer in charge. Instructions April 27, 1911.

THE ABOVE MAP OF TOWNSHIP NO. 25 NORTH, RANGE NO. 20 EAST OF MOUNT DIABLO MERIDIAN, NEVADA, IS STRICTLY CONFORMABLE TO THE FIELD NOTES OF THE SURVEY THEREOF ON FILE IN THIS OFFICE, WHICH HAVE BEEN EXAMINED AND APPROVED

U. S. GENERAL LAND OFFICE
WASHINGTON, D. C.
MAY 15, 1913
Fred Bennett
Commissioner