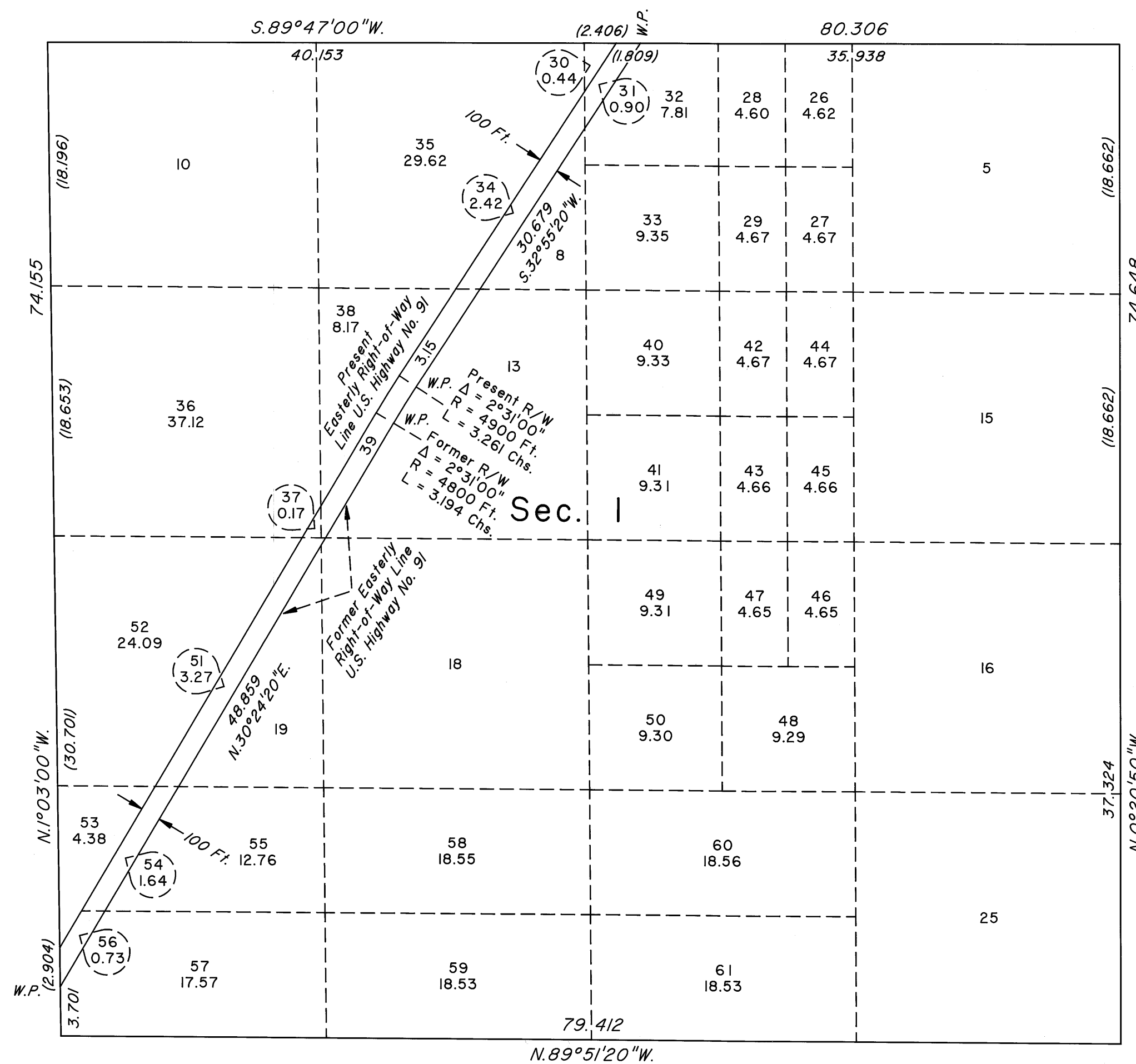


TOWNSHIP 24 SOUTH, RANGE 60 EAST, OF THE MOUNT DIABLO MERIDIAN, NEVADA
SUPPLEMENTAL PLAT OF SECTION I



This plat, showing amended lottings in sec. I, Township 24 South, Range 60 East, Mount Diablo Meridian, Nevada, is based upon the plat approved September 3, 1881, the plat accepted March 25, 2008, and Nevada Department of Highways right-of-way application CC 019435.

UNITED STATES DEPARTMENT OF THE INTERIOR
BUREAU OF LAND MANAGEMENT

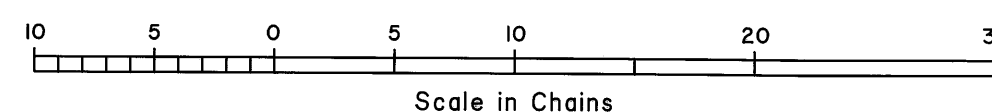
Reno, Nevada April 14, 2009

This plat, showing amended lottings, is based upon the official records, and having been correctly prepared in accordance with the regulations of this Bureau, is hereby accepted.

For the Director

David P. Moulton

Chief Cadastral Surveyor, Nevada



T.24S., R.60E., M.D.M.