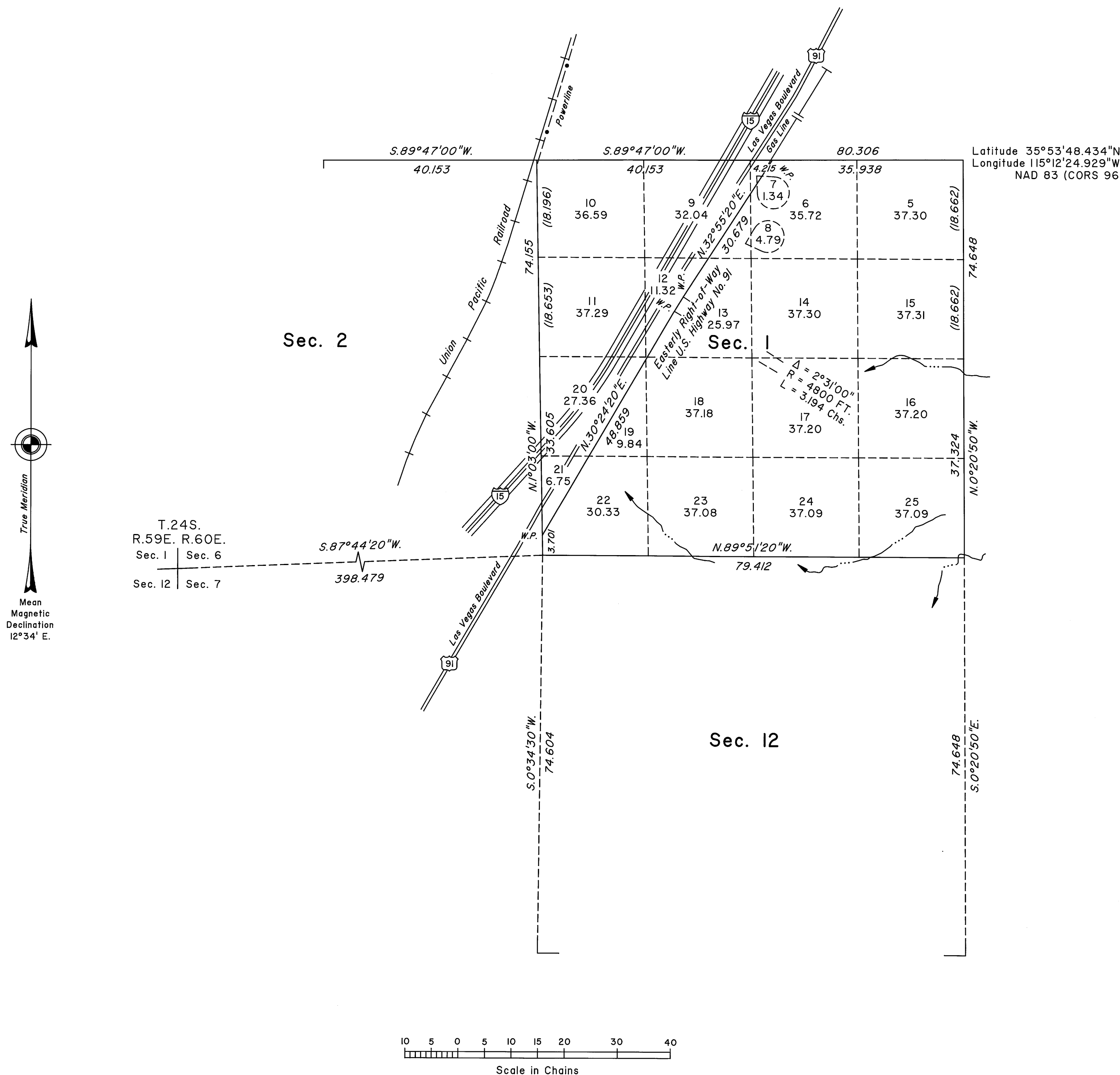


TOWNSHIP 24 SOUTH, RANGE 60 EAST, OF THE MOUNT DIABLO MERIDIAN, NEVADA  
DEPENDENT RESURVEY AND METES-AND-BOUNDS SURVEY



A history of surveys is contained in the field notes.

This plat represents the dependent resurvey of portions of the east and north boundaries and a portion of the subdivisional lines designed to restore the corners in their true original locations according to the best available evidence, and the metes-and-bounds survey of the easterly right-of-way line of U.S. Highway No. 91 through section 1, Township 24 South, Range 60 East, Mount Diablo Meridian, Nevada.

Except as indicated hereon, the lottings and areas are as shown on the plat approved September 3, 1881.

Survey executed by Brock R. Clifford and Kane M. Hellebust, Cadastral Surveyors, beginning November 13, 2007, and completed December 13, 2007, pursuant to Special Instructions dated October 22, 2007, for Group No. 860, Nevada.

UNITED STATES DEPARTMENT OF THE INTERIOR  
BUREAU OF LAND MANAGEMENT

Reno, Nevada March 25, 2008

This plat is strictly conformable to the approved field notes, and the survey, having been correctly executed in accordance with the requirements of law and the regulations of this Bureau, is hereby accepted.

For the Director

*David D. Moran*

Chief Cadastral Surveyor, Nevada

T.24S., R.60E., M.D.M.