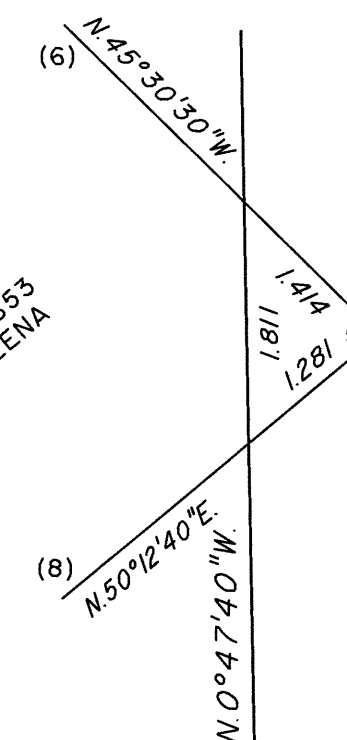
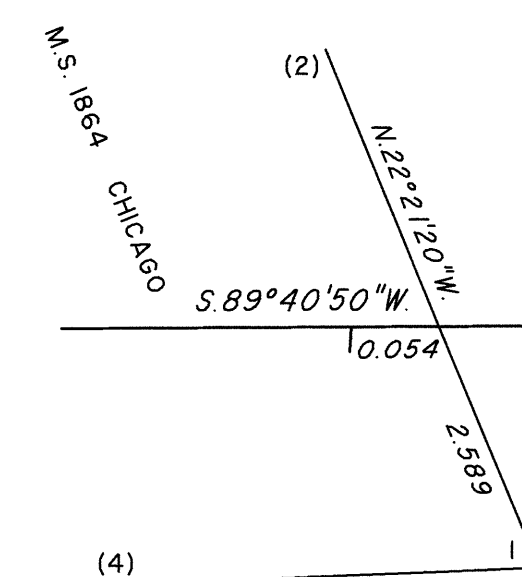


ENLARGED DIAGRAM OF SW 1/4 SECTION 34

DETAIL "P"  
Not to scale



DETAIL "Q"  
Not to scale



Reference should be made to Sheet No. 1 for survey information.

UNITED STATES DEPARTMENT OF THE INTERIOR  
BUREAU OF LAND MANAGEMENT

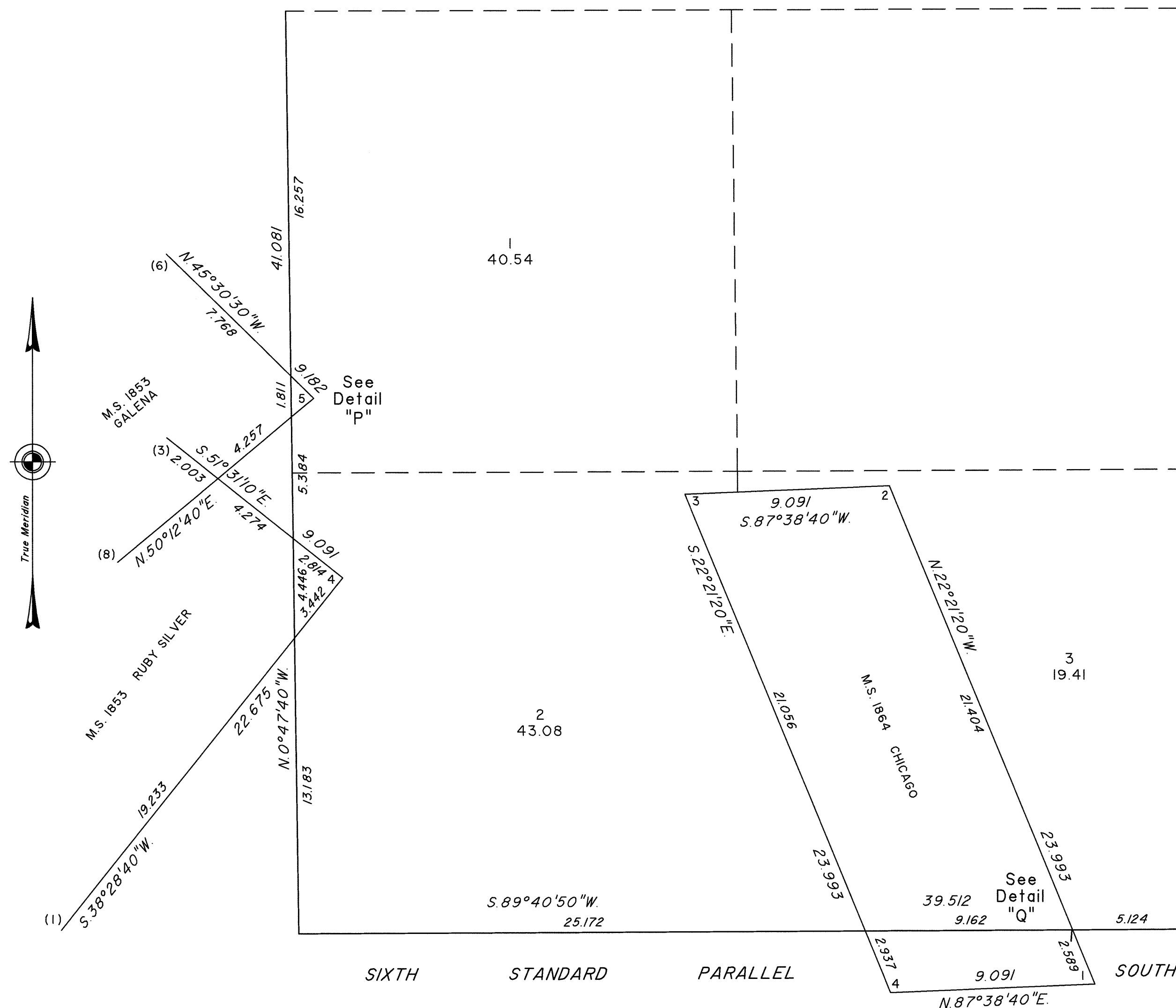
Reno, Nevada                      July 27, 2022

This plat is strictly conformable to the approved field notes, and the survey, having been correctly executed in accordance with the requirements of law and the regulations of this Bureau, is hereby accepted.

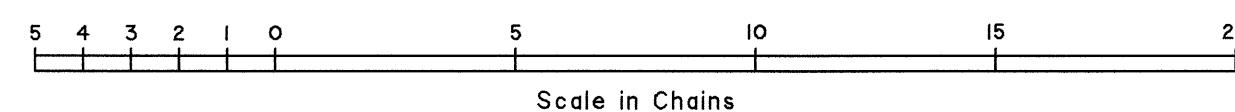
For the Director

Maximal o. Hummer

Chief Cadastral Surveyor for Nevada



Sec. 3



CWM

T.24S., R.58E., M.D.M.