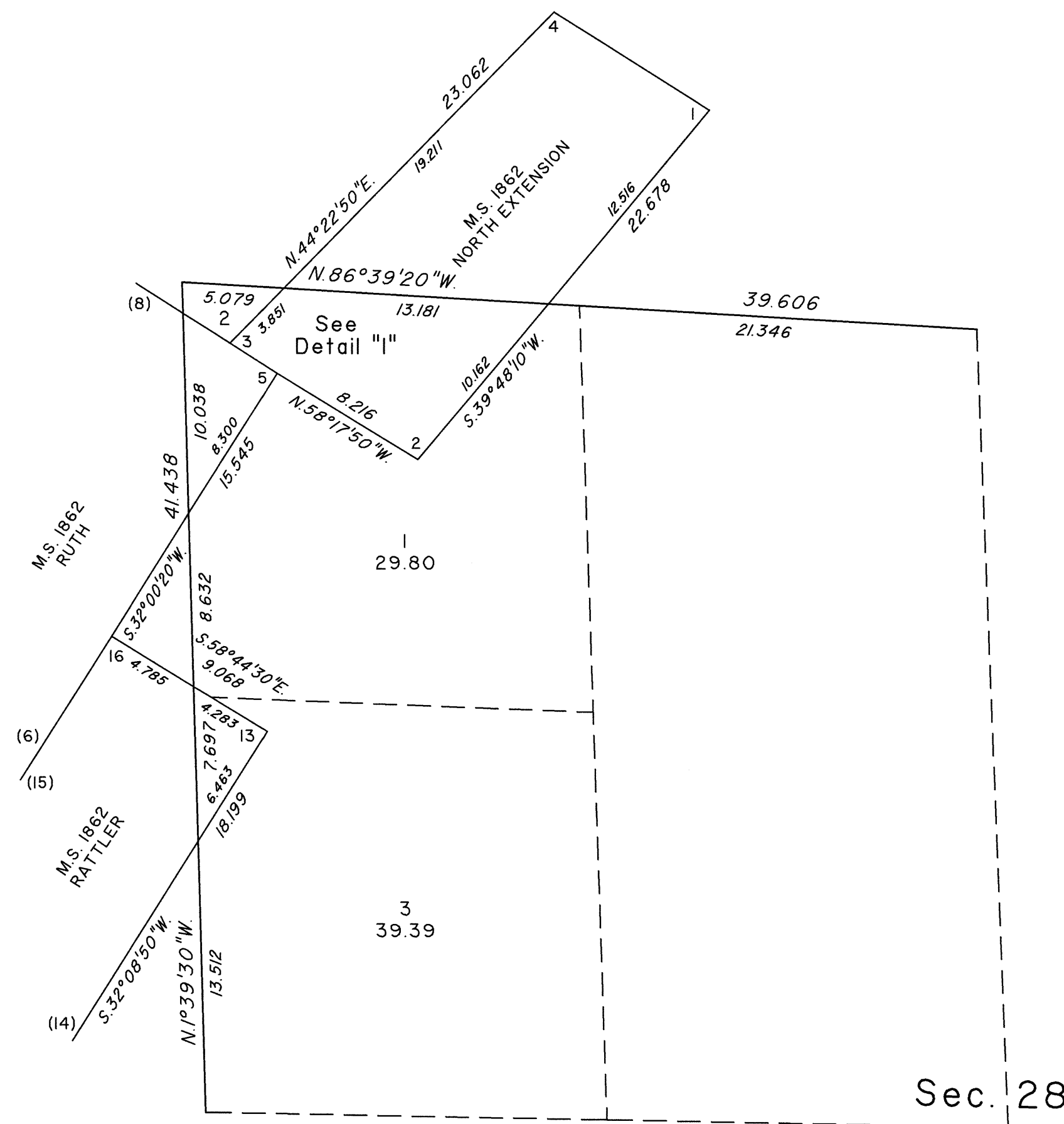
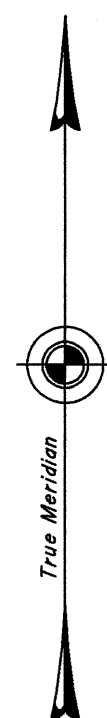


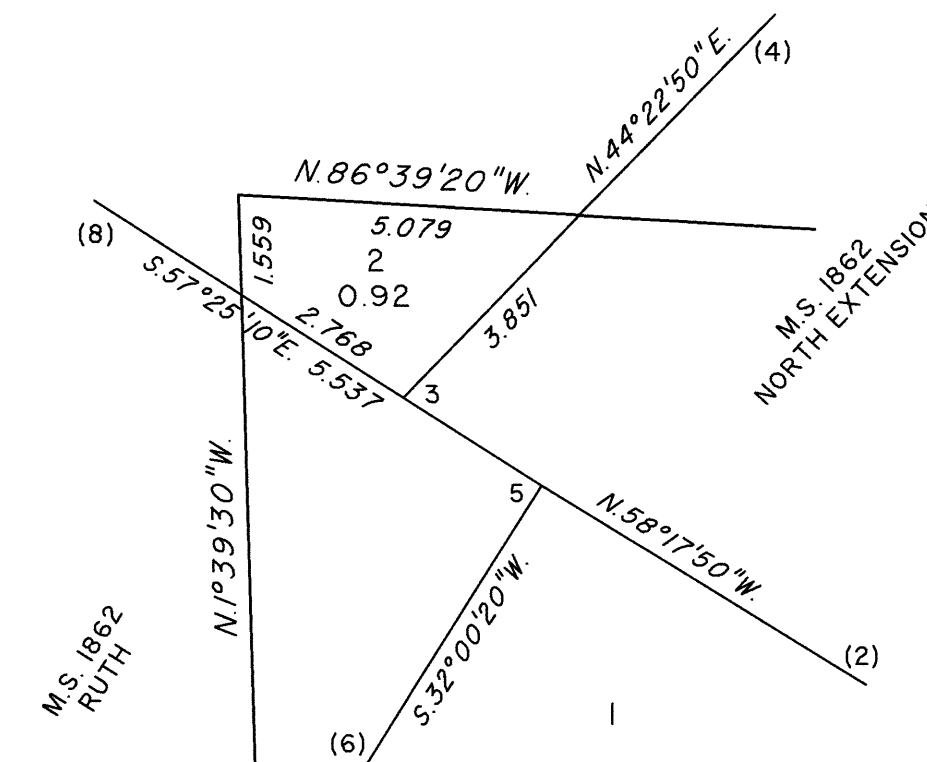
TOWNSHIP 24 SOUTH, RANGE 58 EAST, OF THE MOUNT DIABLO MERIDIAN, NEVADA

ENLARGED DIAGRAM OF NW1/4 SECTION 28

OFFICIALLY FILED
NEVADA STATE OFFICE
at 10:00 AM on
AUG 02 2022



DETAIL "I"
Not to Scale



Reference should be made to Sheet No. 1 for survey information.

UNITED STATES DEPARTMENT OF THE INTERIOR
BUREAU OF LAND MANAGEMENT

Reno, Nevada July 27, 2022

This plat is strictly conformable to the approved field notes, and the survey, having been correctly executed in accordance with the requirements of law and the regulations of this Bureau, is hereby accepted.

For the Director

Mark L. Hummer

Chief Cadastral Surveyor for Nevada

