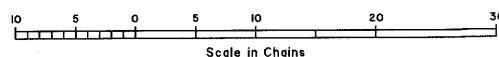
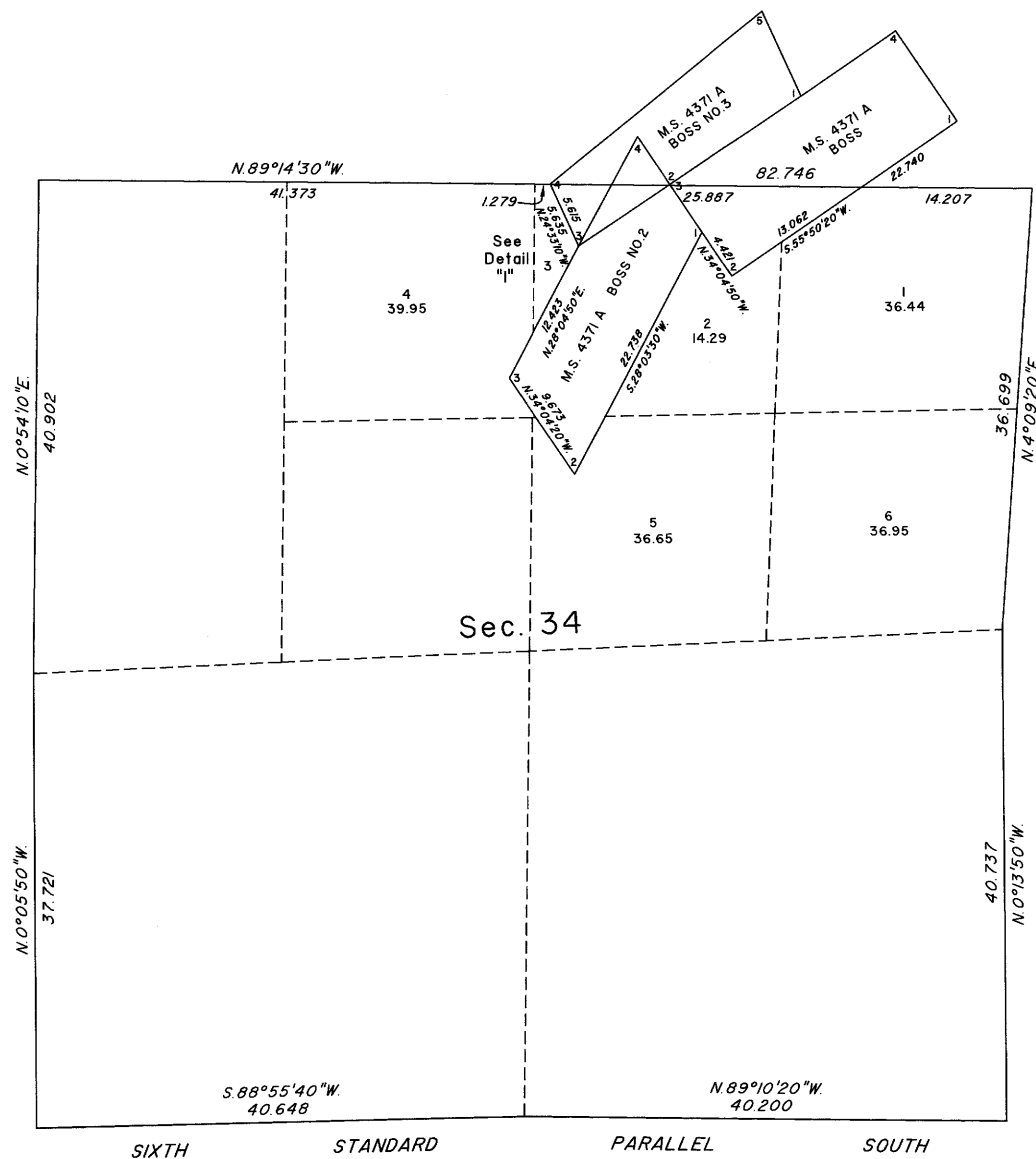
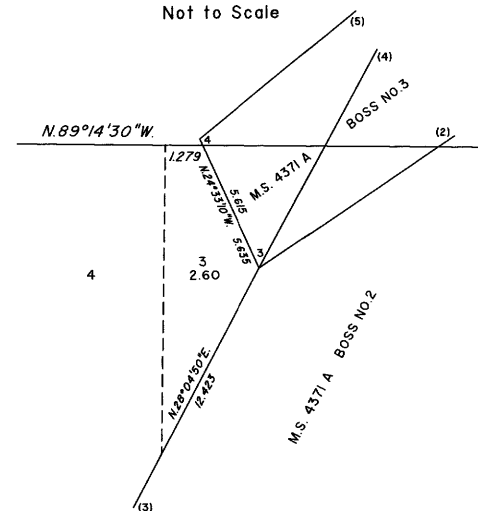


TOWNSHIP 24 SOUTH, RANGE 57 EAST, OF THE MOUNT DIABLO MERIDIAN, NEVADA

ENLARGED DIAGRAM OF SECTION 34



DETAIL "I"
Not to Scale



Reference should be made to Sheet No. 1 for survey information.

UNITED STATES DEPARTMENT OF THE INTERIOR
BUREAU OF LAND MANAGEMENT

Reno, Nevada July 5, 2023

This plat is strictly conformable to the approved field notes, and the survey, having been correctly executed in accordance with the requirements of law and the regulations of this Bureau, is hereby accepted.

For the Director

Michael C. Hummer

Chief Cadastral Surveyor for Nevada