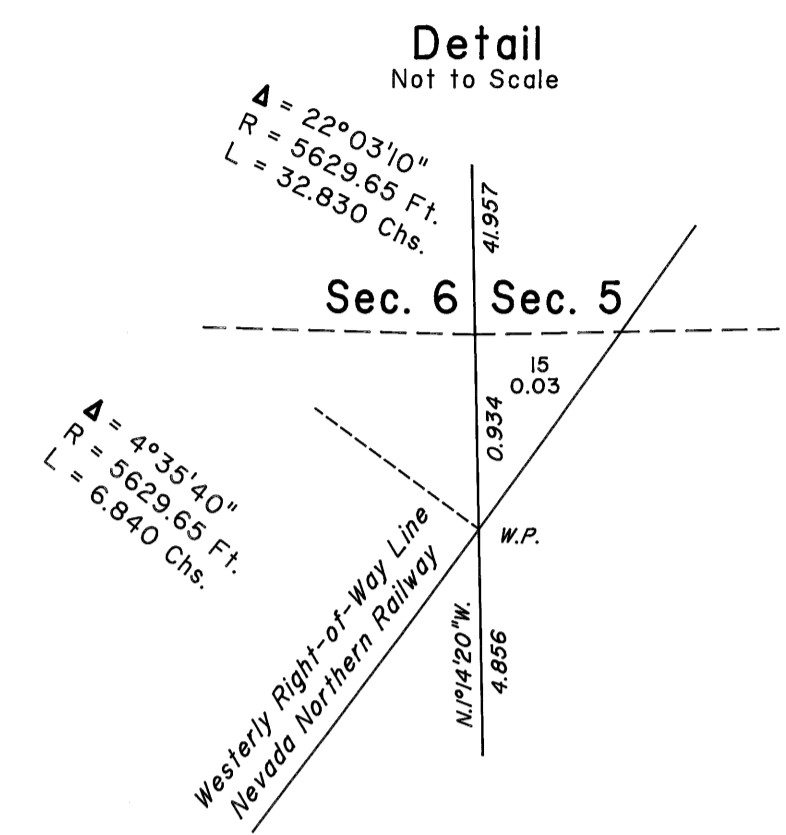
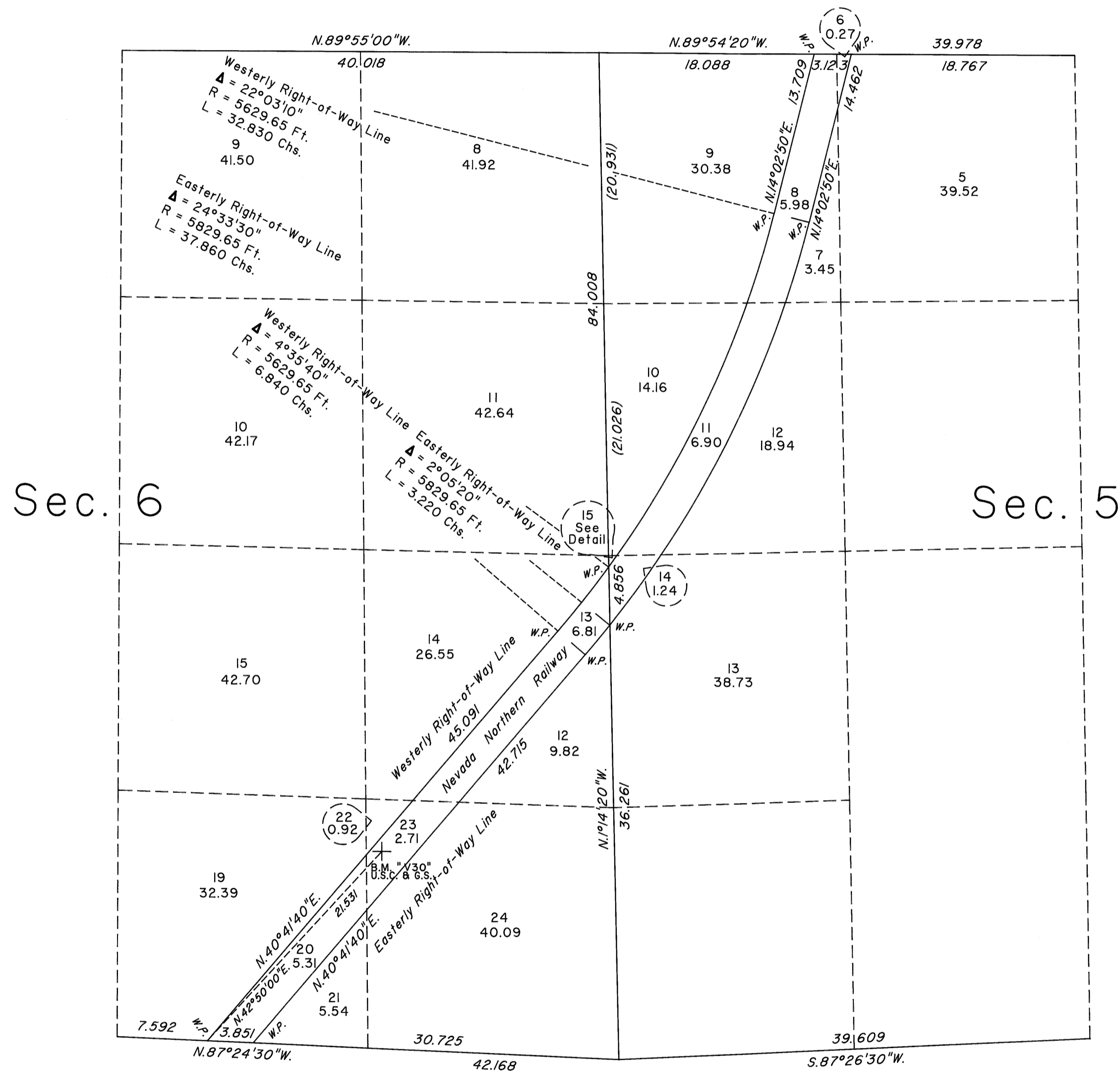


TOWNSHIP 24 NORTH, RANGE 64 EAST, OF THE MOUNT DIABLO MERIDIAN, NEVADA
ENLARGED DIAGRAM

OFFICIALLY FILED
NEVADA STATE OFFICE
at 10:00 AM on February 4, 2011



Reference should be made to Sheet No. 1 for survey information.

UNITED STATES DEPARTMENT OF THE INTERIOR
BUREAU OF LAND MANAGEMENT
Reno, Nevada January 21, 2011

This plat is strictly conformable to the approved field notes, and the survey, having been correctly executed in accordance with the requirements of law and the regulations of this Bureau, is hereby accepted.

For the Director
David A. Sporan

Chief Cadastral Surveyor, Nevada

