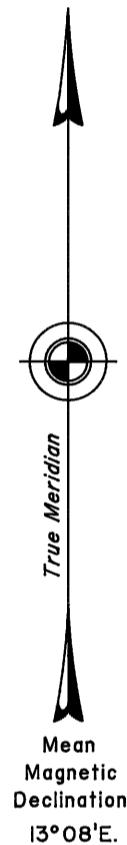
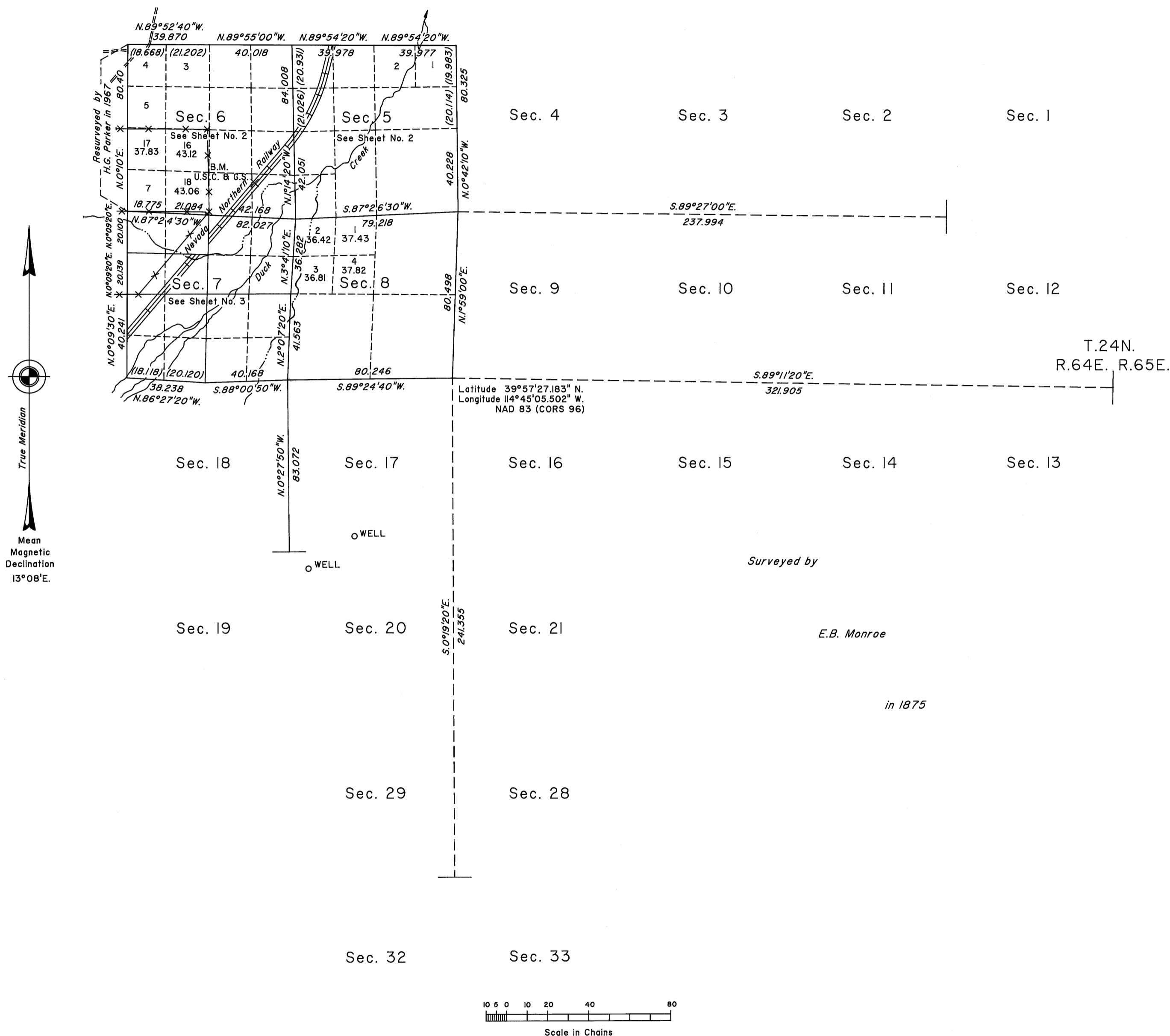


# TOWNSHIP 24 NORTH, RANGE 64 EAST, OF THE MOUNT DIABLO MERIDIAN, NEVADA

## DEPENDENT RESURVEY, SUBDIVISION AND METES-AND-BOUNDS SURVEY

OFFICIALLY FILED  
NEVADA STATE OFFICE  
at 10:00 AM on February 4, 2011



A history of surveys is contained in the field notes.

A dependent resurvey of a portion of the west boundary was executed concurrently under Township 24 North, Range 63 East, of this same Group.

This plat, in three sheets, represents the dependent resurvey of a portion of the north boundary and a portion of the subdivisional lines designed to restore the corners in their true original locations, according to the best available evidence, the subdivision of section 7, and metes-and-bounds-surveys of portions of the easterly and westerly right-of-way lines of the Nevada Northern Railway, Township 24 North, Range 64 East, Mount Diablo Meridian, Nevada.

Except as indicated hereon, the lottings and areas are as shown on the plat approved February 7, 1876.

Survey executed by Kane M. Hellebust, Cadastral Surveyor, beginning July 23, 2009, and completed December 8, 2010, for Group No. 880, Nevada.

UNITED STATES DEPARTMENT OF THE INTERIOR  
BUREAU OF LAND MANAGEMENT

Reno, Nevada January 21, 2011

This plat is strictly conformable to the approved field notes, and the survey, having been correctly executed in accordance with the requirements of law and the regulations of this Bureau, is hereby accepted.

For the Director

Chief Cadastral Surveyor, Nevada