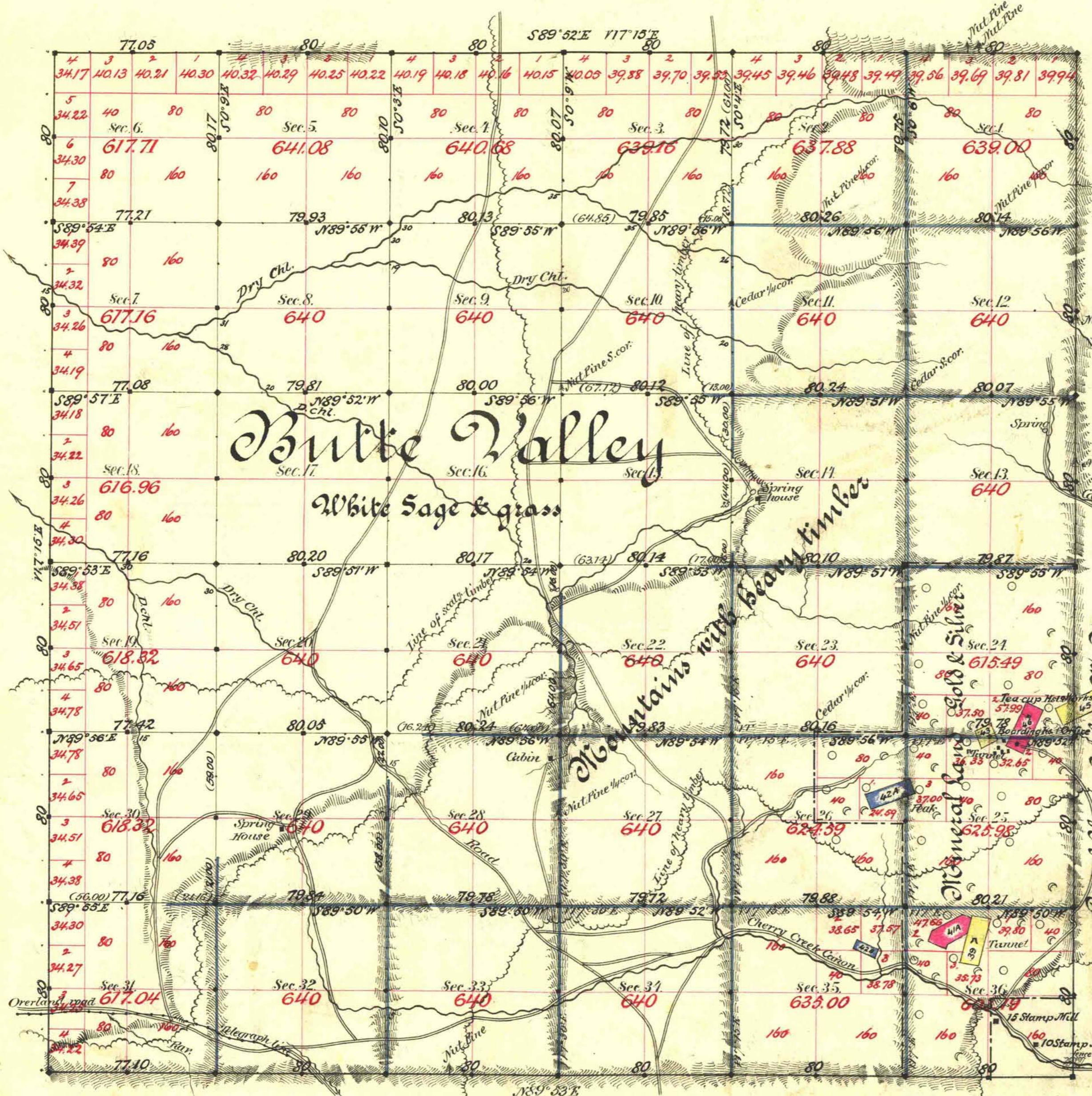


TOWNSHIP N^o 24 NORTH RANGE N^o 62 EAST MOUNT DIABLO MERIDIAN



Part of Cherry Creek M. Dist.				
No.	Claim	Lode	Acre	Approval
39	J. Potts et al	Pacific	6.89	Nov. 10 1873
41	San Jose M. Co.	Sarab	17.95	Oct. 3 rd 1877
42	D. B. Pierce et al.	Pine Nut	23.41	Aug. 2 nd 1878
43	C. Lagan et al	Stephoe	8.12	July 23 "
45	Sea cup & Geneva M. Co.	Geneva	20.66	Mar 1 1881
46	" "	Sea cup	20.66	Feb. 10 "

Aggregate area of Public Land surveyed 20 983.31 ac.
 " " " Mineral " 1920.00 "
 " " " Aggregate 22 903.31 "

U.S. Mon. No 1
 Commenced Sept. 19th 1883
 Completed " 27th "

Subdivisions not noted run with a Var. of 17°30' E.

Surveys Designated.	By Whom Surveyed.	Date of Contract.	Amount of surveys.	When surveyed.	7° Cor.
Township lines	Bell & Bell	March 1 st 1883	23 - 24 - 15	1883	162'
Subd'ns. black	Monroe & McClellan	July 19 th "	27 - 58 - 86	Sept. "	166'
" blue	" "	" "	32 - 07 - 51	" "	"

The above Map of Township No. 24 North of Range No. 62 East Mt. Diablo Meridian is strictly conformable to the field notes of the survey thereof on file in this Office, which have been examined and approved.

Surveyor General's Office, Reno, N. V. *C. C. Downing*
 January 19th 1884 *Surv. Gen'l of Nevada*