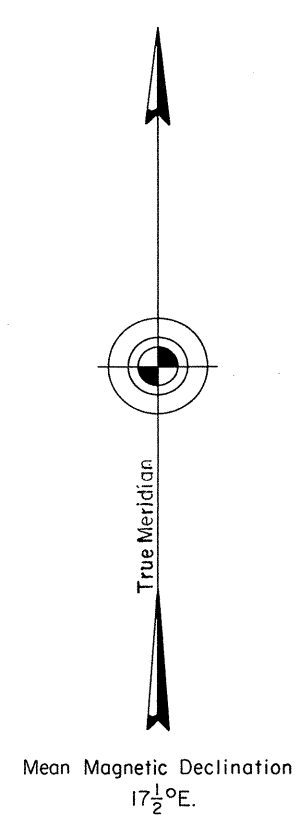


ORIGINAL

OFFICIALLY FILED
NEVADA STATE OFFICE
10:00 AM FEB 16, 1982

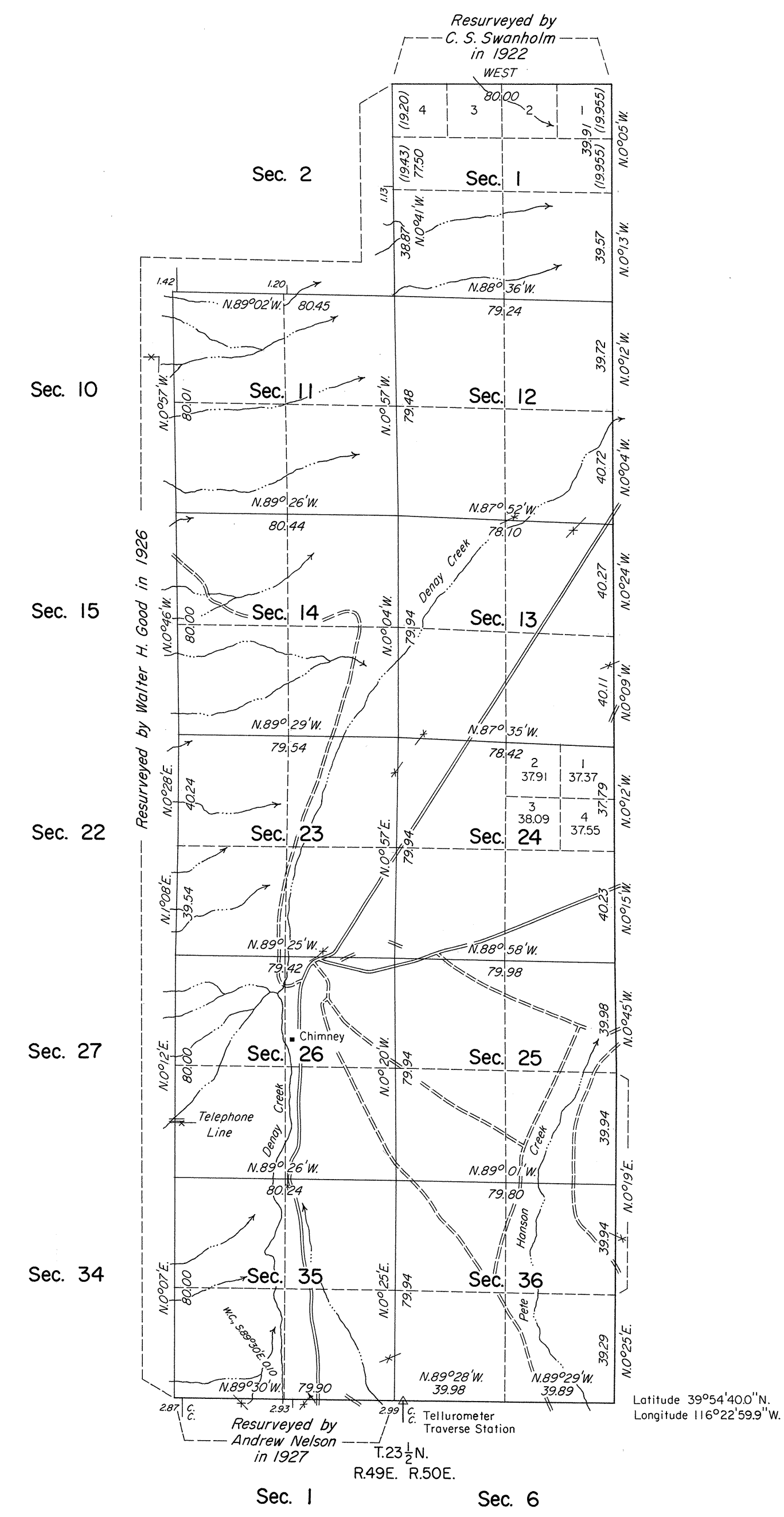
TOWNSHIP 24 NORTH, RANGE 49 EAST, OF THE MOUNT DIABLO MERIDIAN, NEVADA
DEPENDENT RESURVEY



Surveyed by

Walter H. Good

in 1926



A history of surveys is contained in the field notes.

This plat represents the dependent resurvey of the east boundary, a portion of the south boundary, and a portion of the subdivisional lines designed to restore the corners in their true original locations according to the best available evidence, T. 24 N., R. 49 E., Mount Diablo Meridian, Nevada.

Except as indicated hereon, the lottings and areas are as shown on the plat approved May 13, 1879.

Survey executed by Robert A. Pratt, Cadastral Surveyor, beginning October 11, 1979 and completed November 7, 1979 pursuant to Special Instructions dated September 19, 1979, for Group No. 577, Nevada.

UNITED STATES DEPARTMENT OF THE INTERIOR
BUREAU OF LAND MANAGEMENT
Denver, Colorado January 15, 1982

This plat is strictly conformable to the approved field notes, and the survey, having been correctly executed in accordance with the requirements of law and the regulations of this Bureau, is hereby accepted.

For the Director

James H. Gilbert

Acting Chief, Cadastral Survey
Examination and Approval Staff