

TOWNSHIP N^o 24 NORTH RANGE N^o 48½ EAST MOUNT DIABLO MERIDIAN NEVADA

Sec. 25

Sec. 36

T. 25 N., R. 48 E.

T. 24 N., R. 48 E.

Sec. 1

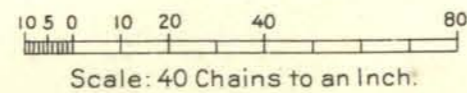
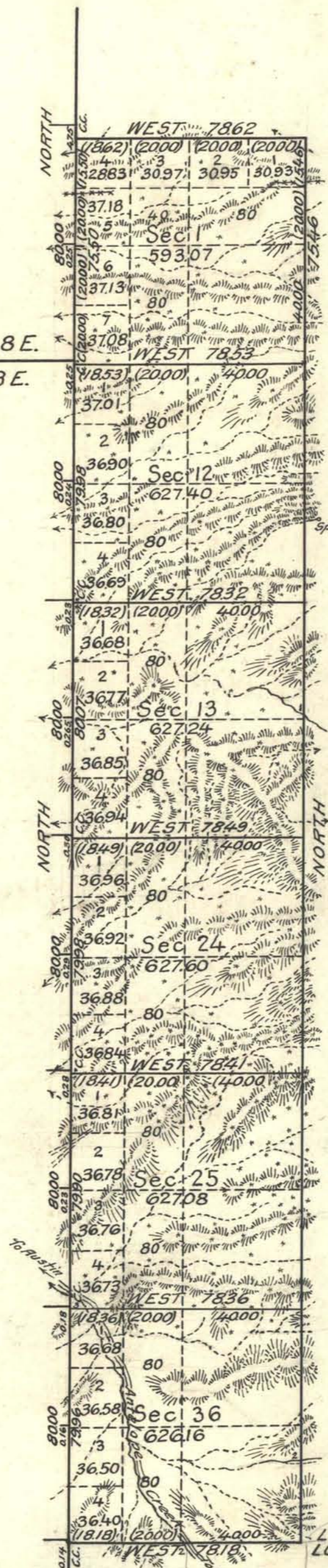
Sec. 12

Sec. 13

Sec. 24

Sec. 25

Sec. 36



Mean Magnetic Declination, Area Surveyed, 3728.55 Acres.

LINES DESIGNATED	BY WHOM SURVEYED	No	GROUP DATE	MILEAGE		WHEN SURVEYED	
				MLS.	CHS.	BEGUN	COMPLETED
Exterior	Walter H. Good	113	Sept. 22, 1923	6	736.4	Sept. 1, 1926	Sept. 3, 1926
Subdivisional	" " "	"	" " "	4	72.11	Sept. 4, 1926	Sept. 9, 1926
Meander							
Miscellaneous							

For connection see T 23 N., R. 49 E.

LATITUDE 39° 54' 30" N. LONGITUDE 116° 30' W.

Office of U.S. Supervisor of Surveys
 Denver, Colorado, Feb. 14, 1928.
 The above plat of Township No. 24 North Range No. 48½ East of the Mount Diablo Meridian, Nevada is strictly conformable to the field notes of the survey thereof which have been examined and approved.

Walter H. Good
 U.S. Supervisor of Surveys

DEPARTMENT OF THE INTERIOR
 GENERAL LAND OFFICE
 Washington, D.C., March 12, 1928.
 The survey represented by this plat having been correctly executed in accordance with the requirements of law and the regulations of this office, is hereby accepted.

Thomas C. Howell
 Assistant Commissioner

231.
W.H.G.
 T. 24 N., R. 48½ E.
 VD TP