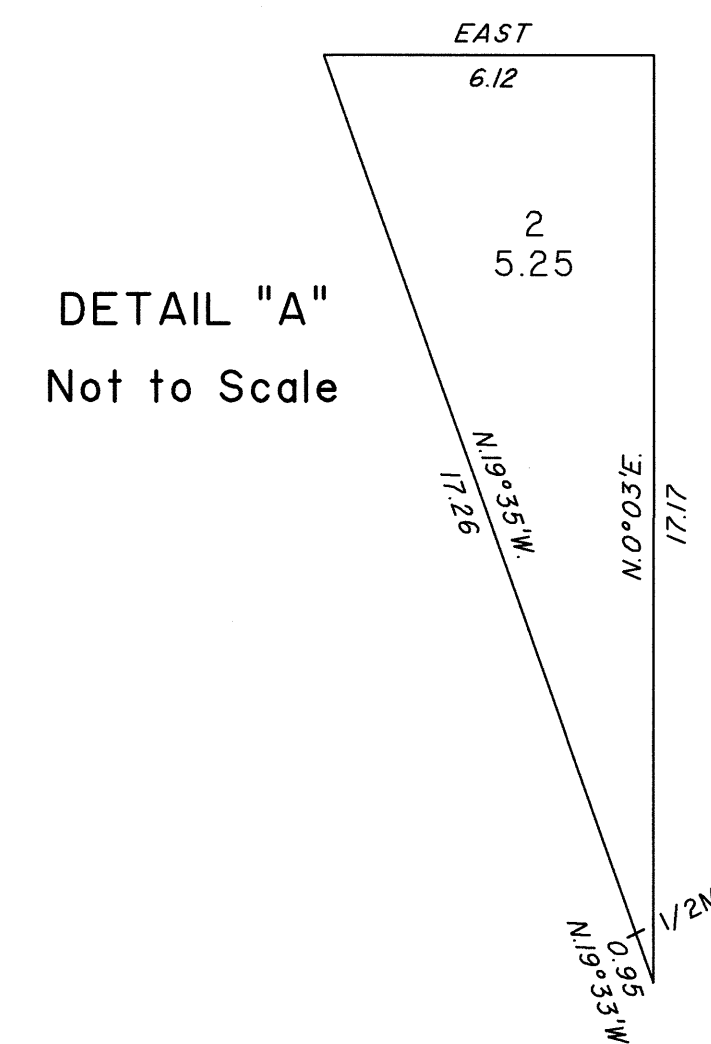
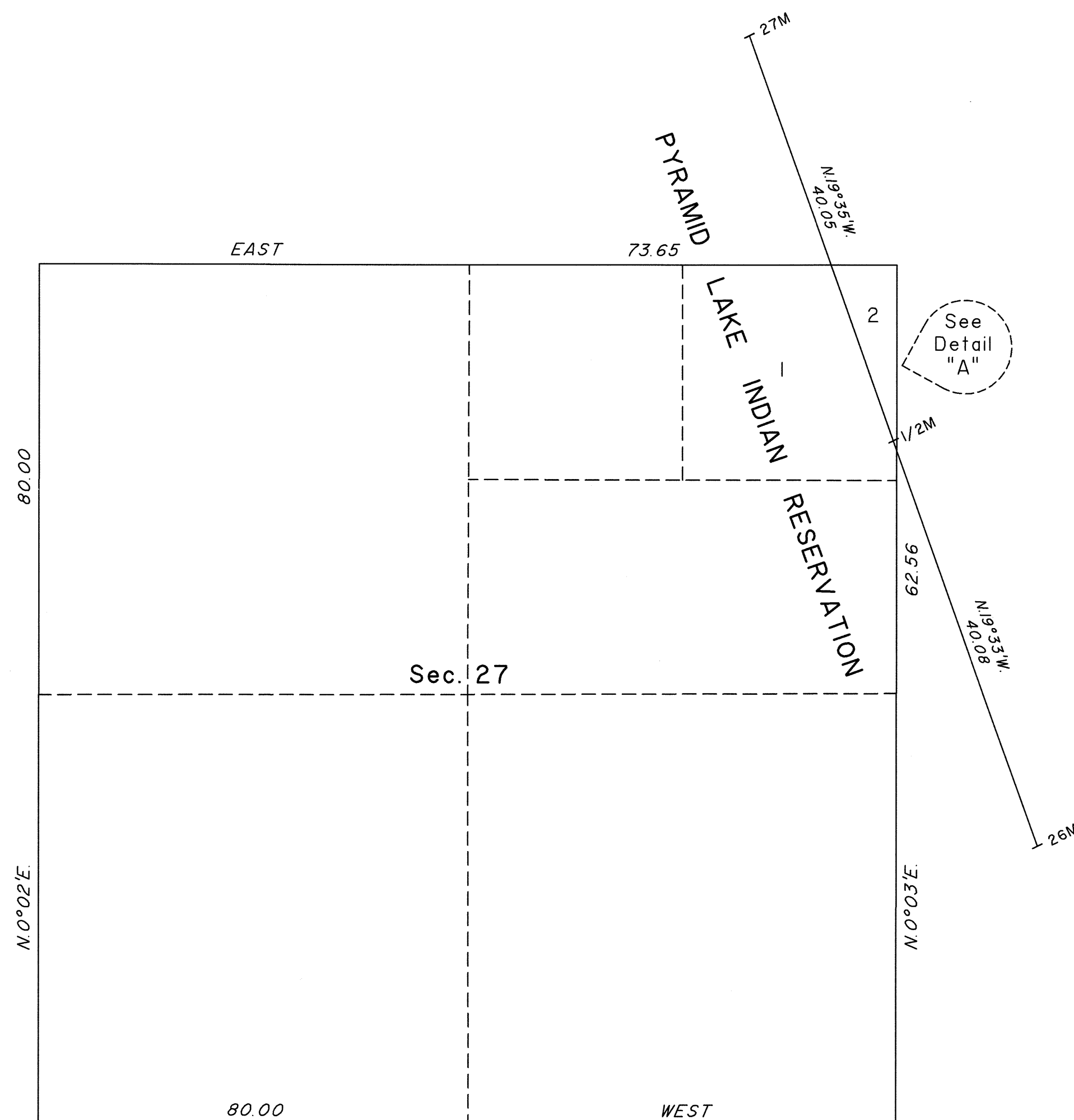


SUPPLEMENTAL PLAT OF SECTION 27



This plat showing additional lotting in the NE1/4NE1/4 of Section 27, Township 24 North, Range 23 East, Mount Diablo Meridian, Nevada is based upon the plats approved May 15, 1913 and April 27, 1917.

Plat prepared under the oversight of Clarence D. Strickland, Supervisory Cadastral Surveyor, beginning July 20, 2022, and completed July 22, 2022, pursuant to Special Instructions dated July 19, 2022, and Assignment Instructions dated July 19, 2022, for Group No. 1001, Nevada.

Except as shown hereon, the lottings and areas are as shown on the plat approved May 15, 1913 and April 27, 1917.

UNITED STATES DEPARTMENT OF THE INTERIOR
BUREAU OF LAND MANAGEMENT

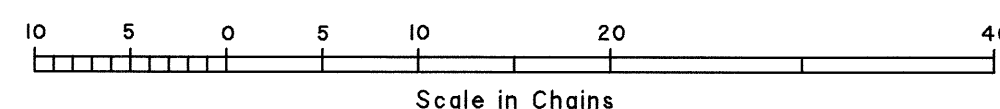
Reno, Nevada August 22, 2022

This plat showing additional lotting, is based upon the official records, and having been correctly prepared in accordance with the requirements of the law and the regulations of this Bureau, is hereby accepted.

For the Director

Michael O. Hammer,

Chief Cadastral Surveyor for Nevada



RPM

T.24N., R.23E., M.D.M.