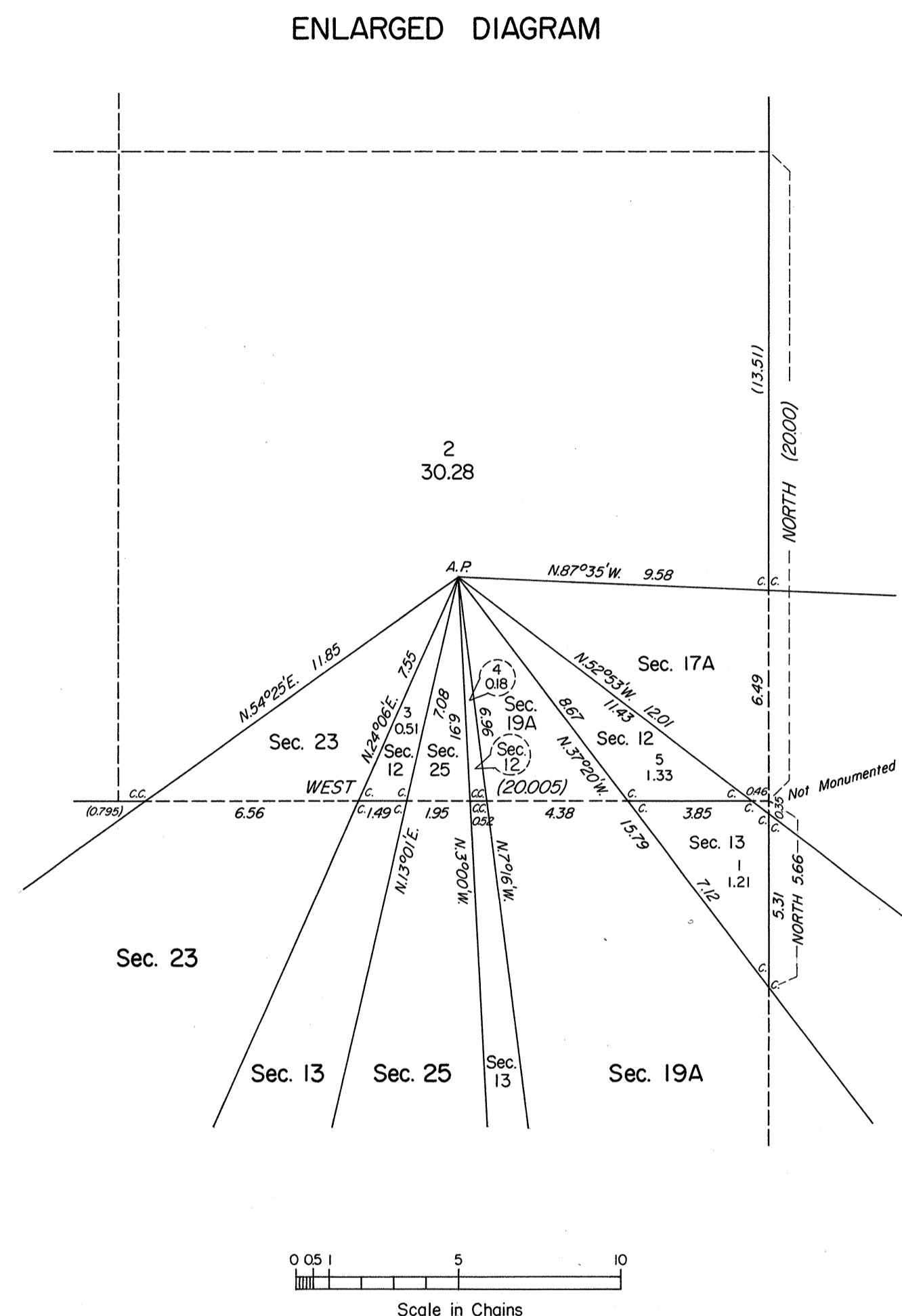
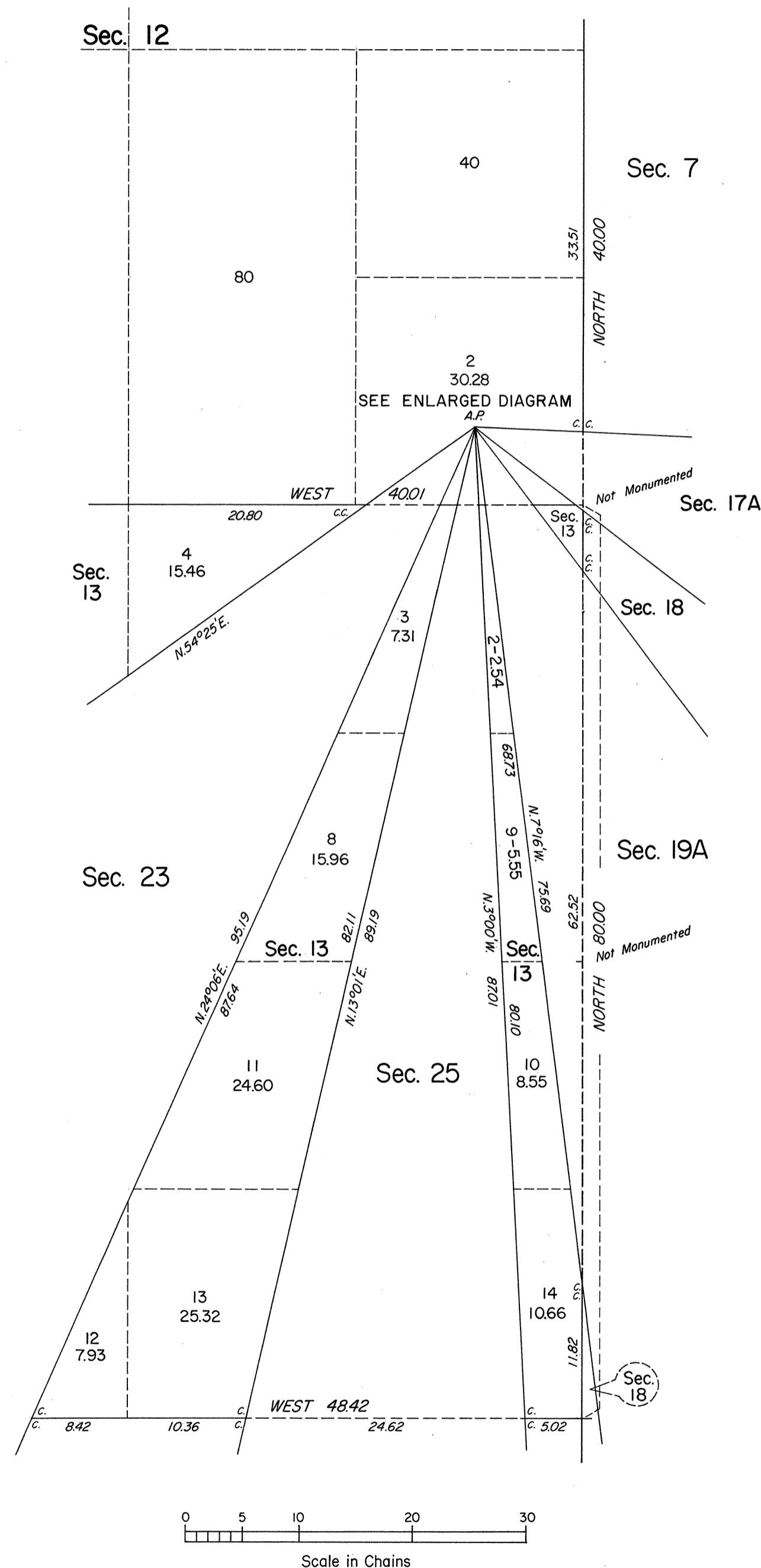
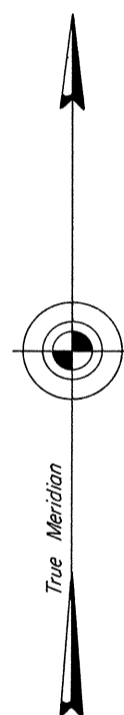


TOWNSHIP 24 NORTH, RANGE 23 EAST, OF THE MOUNT DIABLO MERIDIAN, NEVADA

OFFICIALLY FILED
NEVADA STATE OFFICE
10:00 a.m., July 24, 1981



This sheet represents an enlarged diagram of sections 12 and 13.

Reference should be made to Sheet No. 1 for survey information.

UNITED STATES DEPARTMENT OF THE INTERIOR
BUREAU OF LAND MANAGEMENT
Denver, Colorado November 30, 1979

This plat is strictly conformable to the approved field notes, and the survey, having been correctly executed in accordance with the requirements of law and the regulations of this Bureau, is hereby accepted.

For the Director

[Signature]

Chief, Cadastral Survey
Examination & Approval Staff