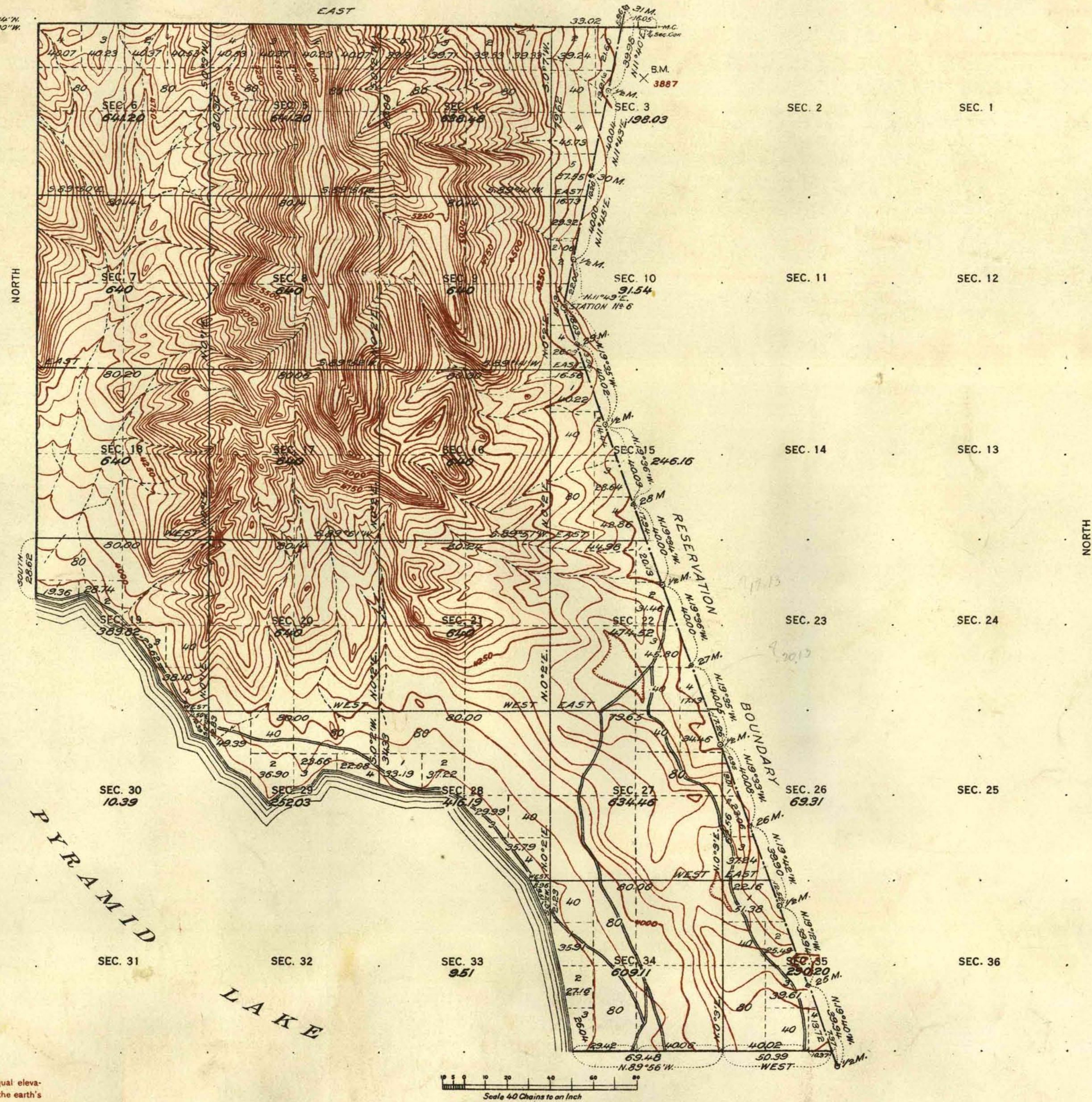


FRACTIONAL TOWNSHIP NO. 24 NORTH, RANGE NO. 23 EAST OF MOUNT DIABLO MERIDIAN, NEVADA.
PYRAMID LAKE INDIAN RESERVATION

LATITUDE 39° 53' 14" N.
LONGITUDE 119° 27' 00" W.



Contour interval 50 feet

Note: Curved lines or contours, are lines of equal elevation, and represent approximately the form of the earth's surface and the altitude above sea level.

SURVEYS DESIGNATED	BY WHOM SURVEYED	WHEN SURVEYED
STANDARD LINES	GUY P. HARRINGTON U.S. Surveyor	MAY 13, 15, 1912.
TOWNSHIP	EARL G. HARRINGTON U.S. Surveyor	" 9-15, "
SUBDIVISION	" " " "	" 17, "
MEANDER	GUY P. HARRINGTON U.S. Surveyor	" 9, "
BOUNDARY	" " " "	
CONNECTIONS		

A. F. DUNN, Topographer in charge. Instructions April 27, 1911.

TOTAL NUMBER OF ACRES 10732.15

THE ABOVE MAP OF FRACTIONAL TOWNSHIP NO. 24 NORTH, RANGE NO. 23 EAST OF MOUNT DIABLO MERIDIAN, NEVADA, IS STRICTLY CONFORMABLE TO THE FIELD NOTES OF THE SURVEY THEREOF ON FILE IN THIS OFFICE, WHICH HAVE BEEN EXAMINED AND APPROVED

U. S. GENERAL LAND OFFICE

WASHINGTON, D. C.
MAY 15, 1913

Commissioner.