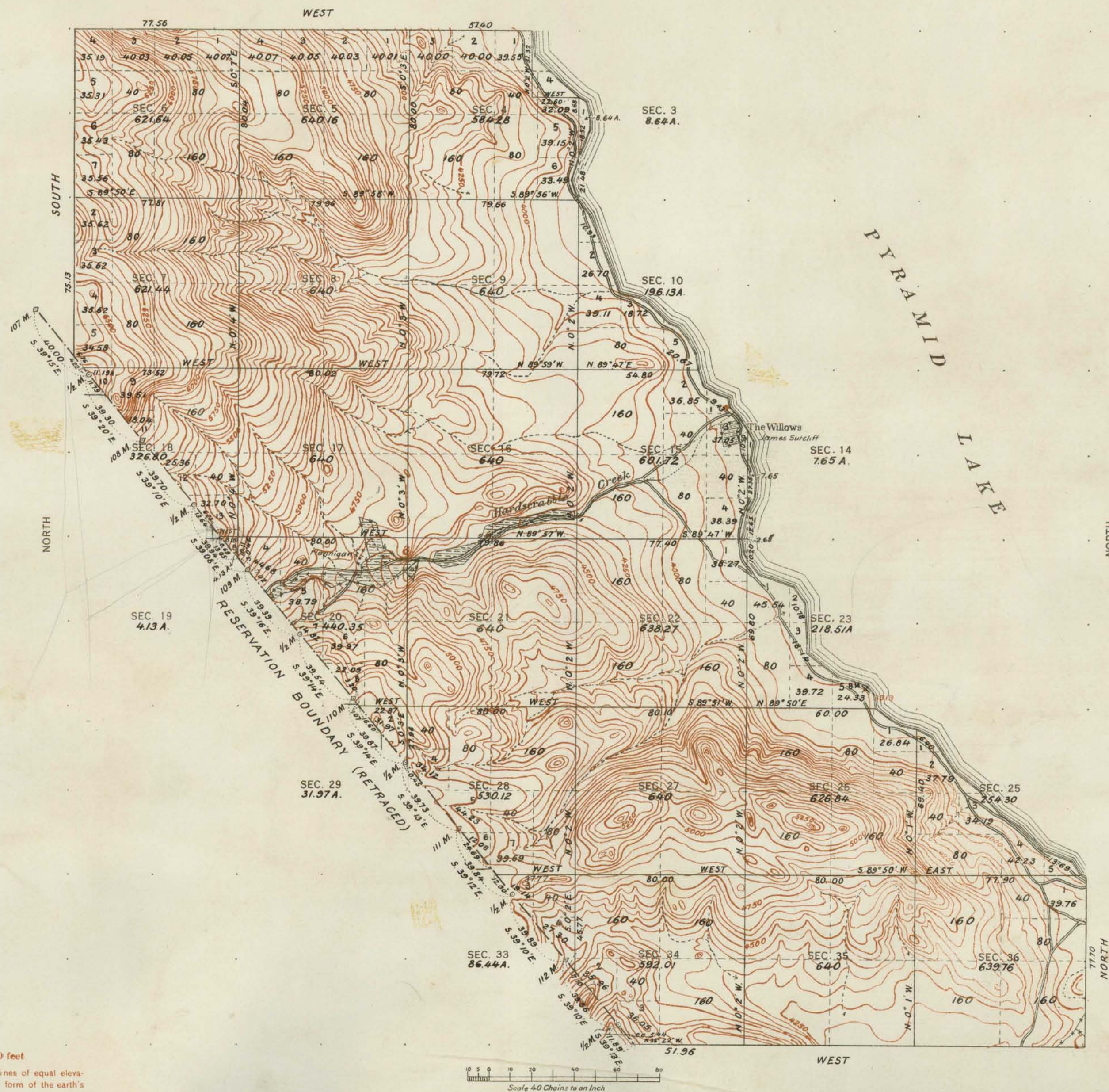


TOWNSHIP NO. 24 NORTH, RANGE NO. 21 EAST OF MOUNT DIABLO MERIDIAN, NEVADA.
PYRAMID LAKE INDIAN RESERVATION



SURVEYS DESIGNATED	BY WHOM SURVEYED	AMOUNT OF SURVEYS M. CHS. LKS.	WHEN SURVEYED
STANDARD LINES	G. P. HARRINGTON	— — —	JULY 15-29, 1911.
TOWNSHIP	"	— — —	JULY 24-AUG. 7, 1911.
SUBDIVISION	"	— — —	AUG. 2, 1911.
MEANDER	"	— — —	JULY 21, 22, 1911.
BOUNDARY	"	— — —	JULY 24-AUG. 7, 1911.
CONNECTIONS	"	— — —	

F. DUNNINGTON, Topographer in charge. Instructions April 27, 1911.

TOTAL NUMBER OF ACRES 12151.16

THE ABOVE MAP, OF TOWNSHIP NO. 24 NORTH, RANGE NO. 21 EAST OF MOUNT DIABLO MERIDIAN, NEVADA, IS STRICTLY CONFORMABLE TO THE FIELD NOTES OF THE SURVEY THEREOF ON FILE IN THIS OFFICE, WHICH HAVE BEEN EXAMINED AND APPROVED

U. S. GENERAL LAND OFFICE

WASHINGTON, D. C.
MAY 15, 1913

Shed W. Bennett
Commissioner.