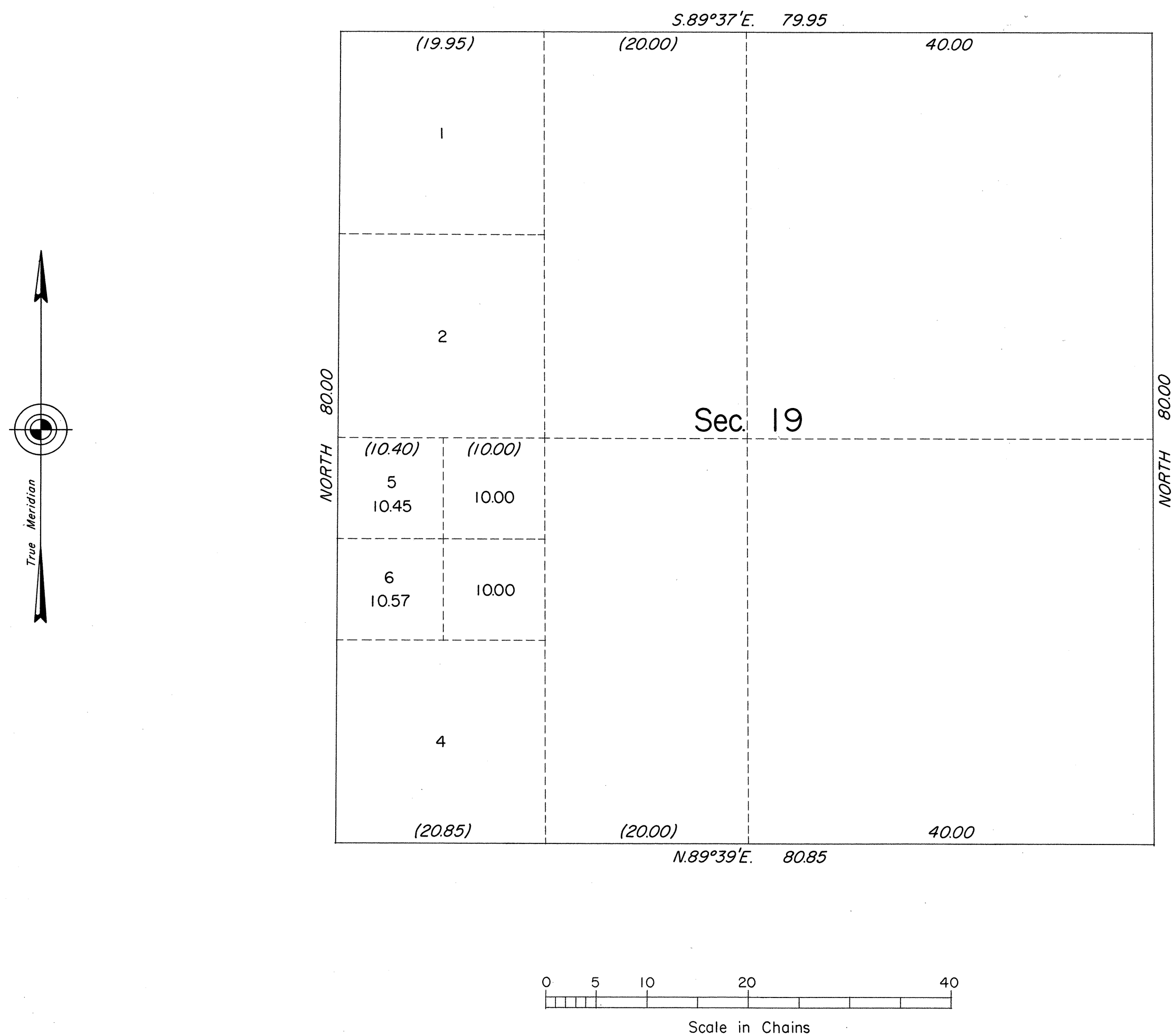


TOWNSHIP 24 NORTH, RANGE 20 EAST, OF THE MOUNT DIABLO MERIDIAN, NEVADA
SUPPLEMENTAL PLAT OF SECTION 19

This supplemental plat of sec. 19, T. 24 N., R. 20 E., Mount Diablo Meridian, Nevada showing amended lottings is based on the plats approved January 15, 1868, August 23, 1884 and January 19, 1888.

UNITED STATES DEPARTMENT OF THE INTERIOR
BUREAU OF LAND MANAGEMENT
Washington, D.C. January 24, 1972

This plat, showing amended lottings, is based upon the official records and, having been correctly prepared in accordance with the regulations, is hereby accepted.

For the Director

Clark F. Gamm

Chief, Division of Cadastral Survey