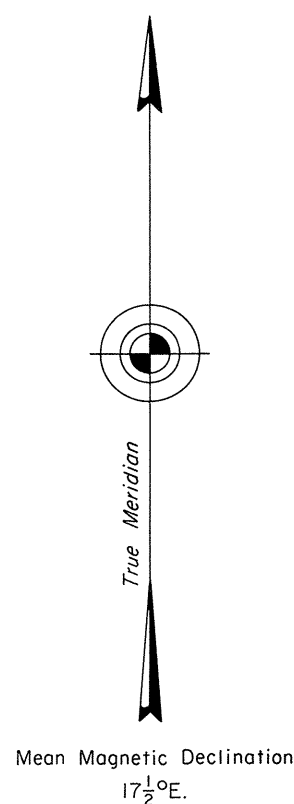
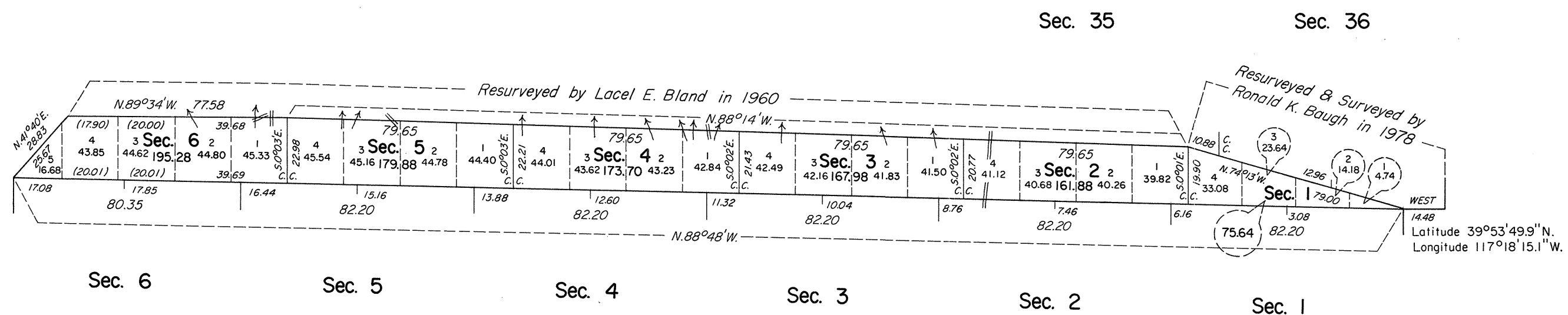


# TOWNSHIP 23 1/2 NORTH, RANGE 41 EAST, OF THE MOUNT DIABLO MERIDIAN, NEVADA

OFFICIALLY FILED  
NEVADA STATE OFFICE  
10:00 A.M. Sept. 20, 1982



History of earlier surveys is contained in the field notes.

A dependent resurvey of the north boundary of T. 23 N., R. 41 E. was executed concurrently under this same group.

This plat represents a survey of the west boundary and subdivisional lines of T. 23 1/2 N., R. 41 E.

Survey executed by Ronald K. Baugh, Cadastral Surveyor, November 27 to December 21, 1979, under Supplemental Special Instructions dated November 16, 1979, for Group No. 572, Nevada.

UNITED STATES DEPARTMENT OF THE INTERIOR  
BUREAU OF LAND MANAGEMENT

Reno, Nevada July 7, 1982

This plat is strictly conformable to the approved field notes, and the survey, having been correctly executed in accordance with the requirements of law and the regulations of this Bureau, is hereby accepted.

For the Director

*Lael E. Bland*

Chief Cadastral Surveyor

