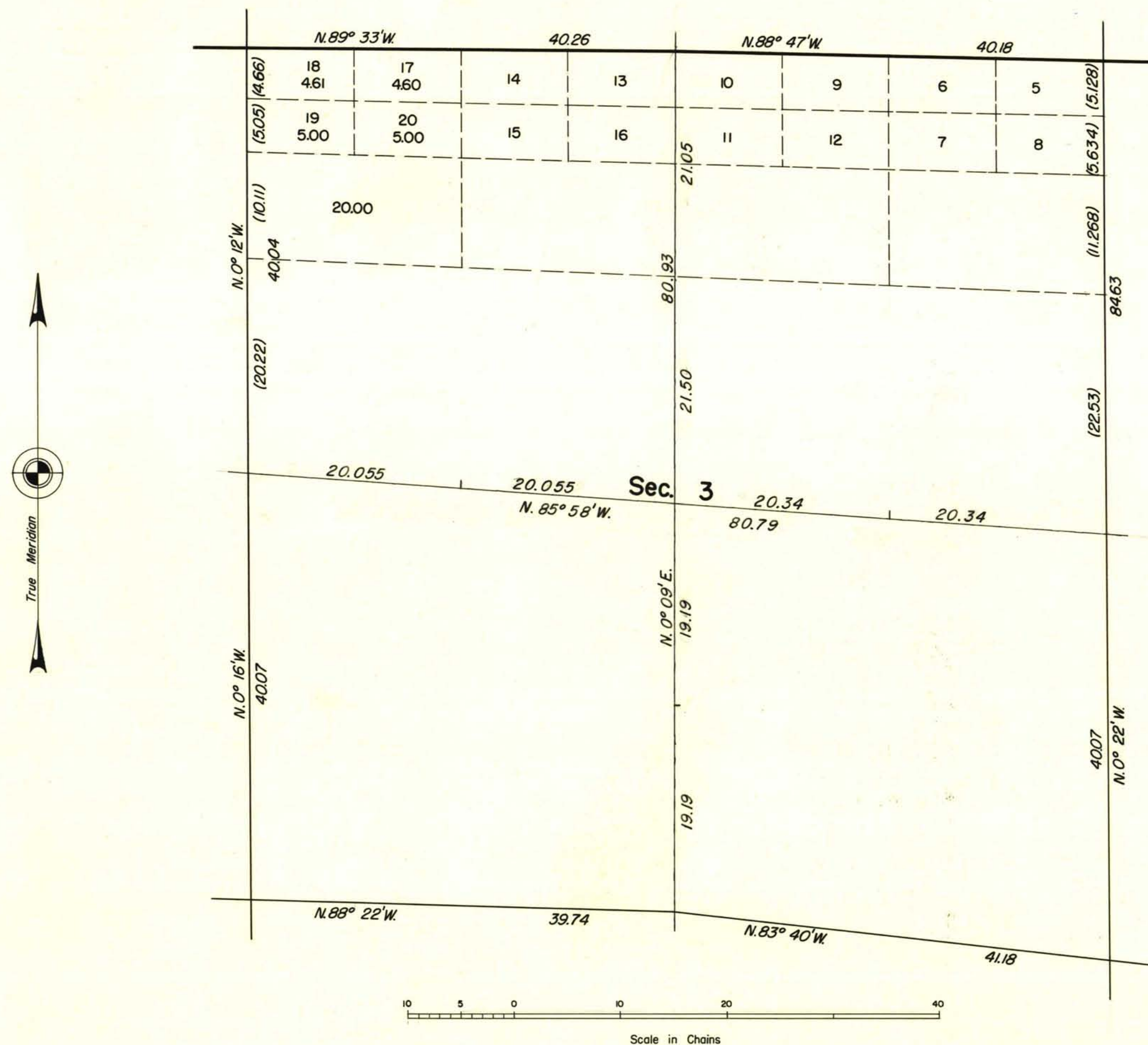


TOWNSHIP 23 SOUTH, RANGE 61 EAST, OF THE MOUNT DIABLO MERIDIAN, NEVADA  
SUPPLEMENTAL PLAT OF SECTION 3



This supplemental plat of section 3,  
T. 23 S., R. 61 E., Mount Diablo Meridian,  
Nevada, showing the subdivision of original  
lot 4, is based upon plat approved  
November 23, 1881 and plats accepted  
November 6, 1956 and May 23, 1958.

UNITED STATES DEPARTMENT OF THE INTERIOR  
BUREAU OF LAND MANAGEMENT  
Washington, D. C. June 1, 1960

This plat, showing amended lottings, is based upon  
the official records, and having been correctly prepared  
in accordance with the regulations, is hereby accepted.

For the Director

*Donald Clement*

Cadastral Engineering Staff Officer