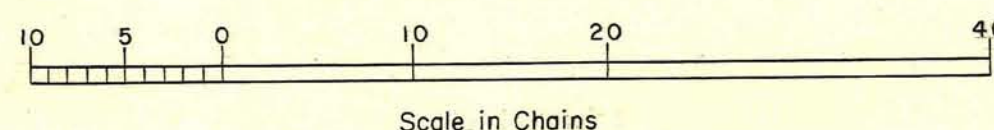
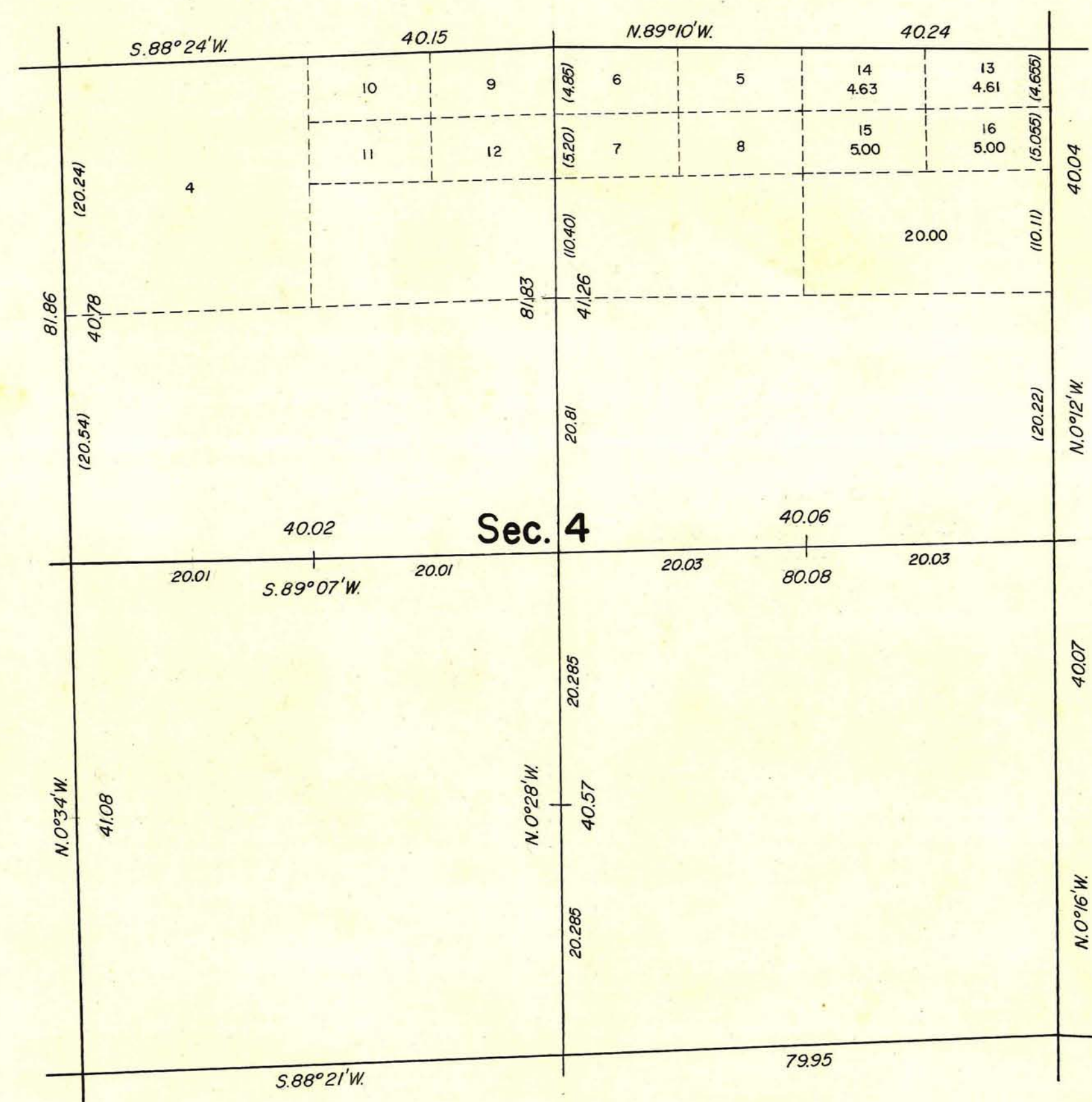
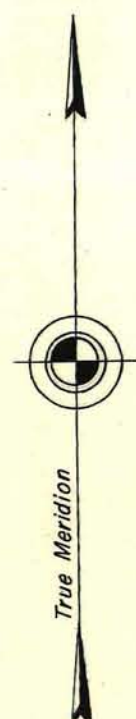


TOWNSHIP 23 SOUTH, RANGE 61 EAST, OF THE MOUNT DIABLO MERIDIAN, NEVADA.
SUPPLEMENTAL PLAT OF SECTION 4



This plat, showing the subdivision of original lot 1 of section 4, T. 23 S., R. 61 E., Mount Diablo Meridian, Nevada, is based upon plat approved November 23, 1881 and plats accepted November 6, 1956 and May 23, 1958.

UNITED STATES DEPARTMENT OF THE INTERIOR
BUREAU OF LAND MANAGEMENT
Washington, D.C. December 3, 1959

This plat, showing amended lottings, is based upon the official records, and having been correctly prepared in accordance with the regulations, is hereby accepted.

For the Director

Clark I. Humm

Acting Cadastral Engineering Staff Officer