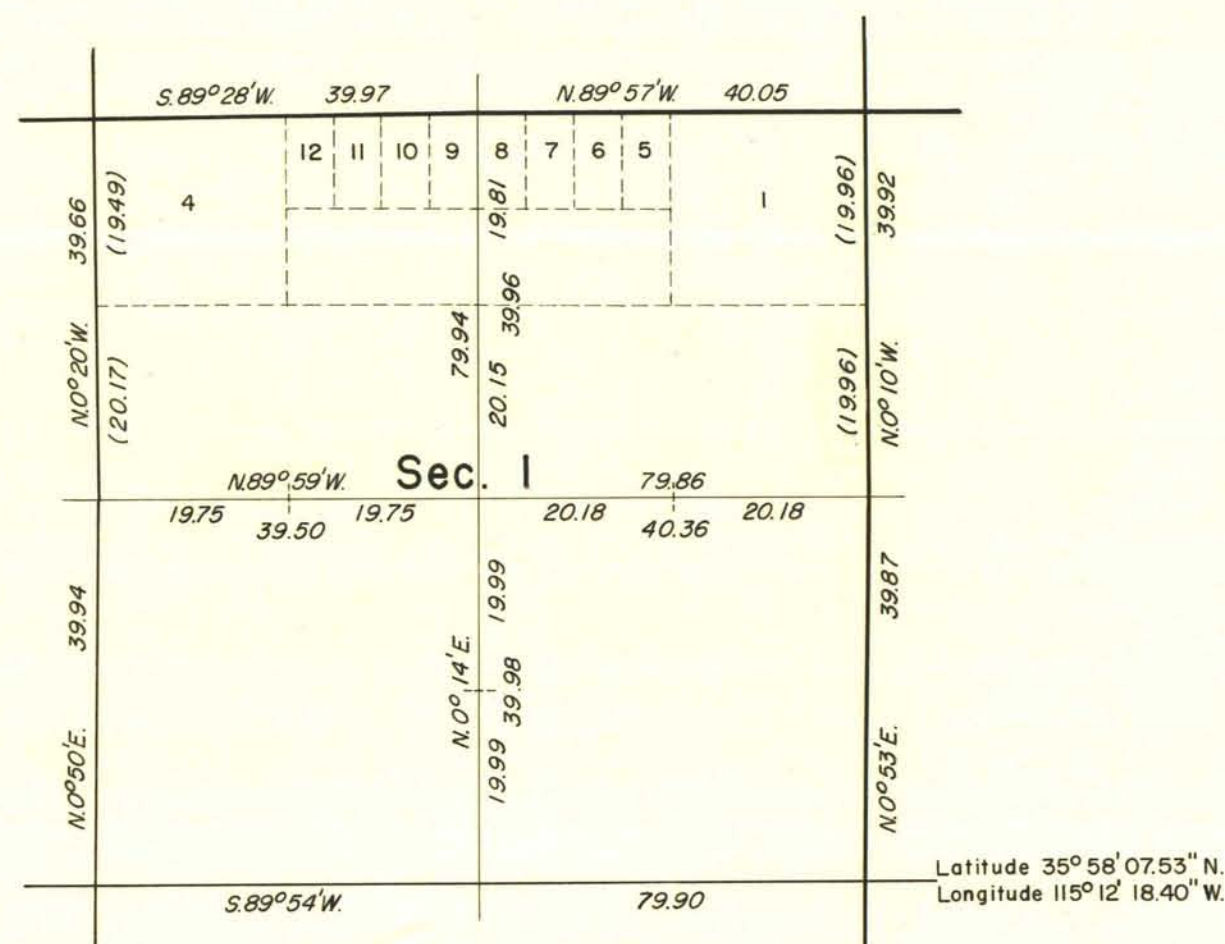
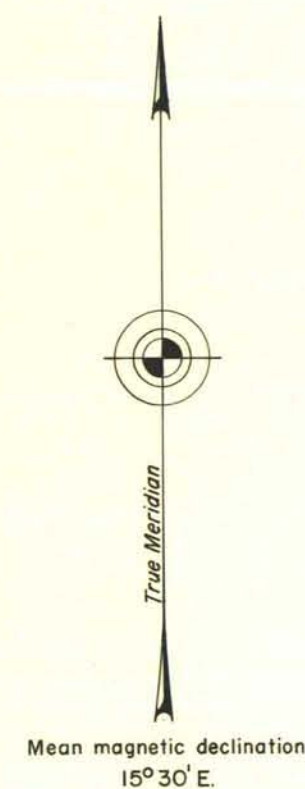


## TOWNSHIP 23 SOUTH, RANGE 60 EAST, MOUNT DIABLO MERIDIAN, NEVADA.

## SUBDIVISION OF SECTION I



The history of earlier surveys is contained in the field notes.

Survey of the subdivisional lines of sec. 1, T. 23 S., R. 60 E., Mount Diablo Meridian, Nevada, executed by Paul K. Russell April 12, 1957, under supplemental special instructions dated August 10, 1956 for Group 364, Nevada.

Areas are as shown on plat approved September 3, 1881 and plat accepted November 6, 1956.

UNITED STATES DEPARTMENT OF THE INTERIOR  
BUREAU OF LAND MANAGEMENT  
Washington, D. C. May 23, 1958

This plat is strictly conformable to the approved field notes, and the survey, having been correctly executed in accordance with the requirements of law and the regulations of this Bureau, is hereby accepted.

For the Director

*Earl G. Harrington*  
Cadastral Engineering Staff Officer