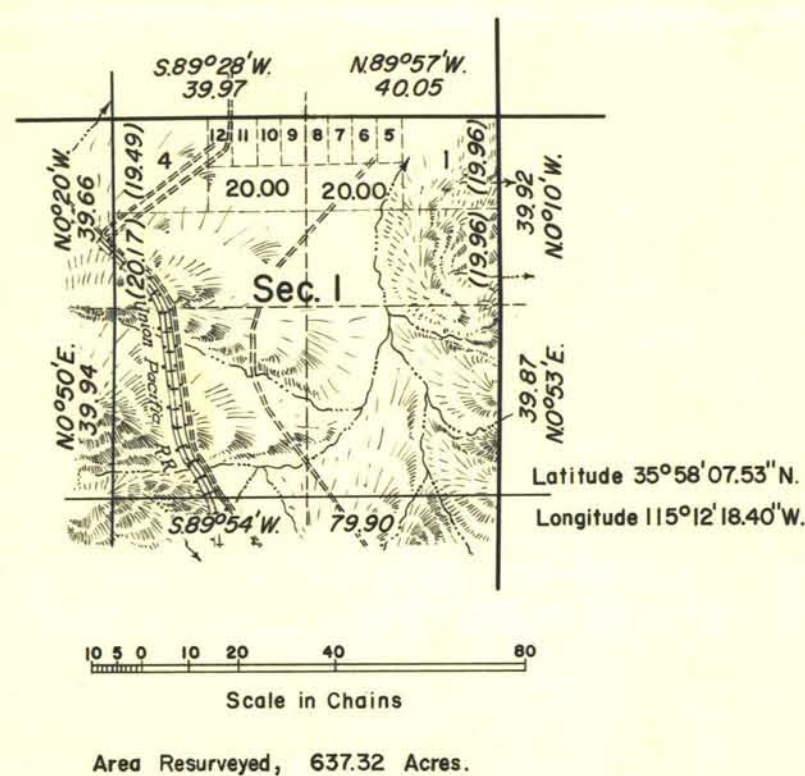


TOWNSHIP 23 SOUTH, RANGE 60 EAST, OF THE MOUNT DIABLO MERIDIAN, NEVADA.
DEPENDENT RESURVEY



List of Acreage	
Lot 5 - 4.91	Acres
" 6 - 4.89	"
" 7 - 4.86	"
" 8 - 4.84	"
" 9 - 4.82	"
" 10 - 4.80	"
" 11 - 4.78	"
" 12 - 4.76	"

History of earlier surveys is contained in the field notes.

This plat represents the dependent resurvey of a portion of the subdivisional lines of T. 23 S., R. 60 E., Mt. Diablo Meridian, Nevada, designed to restore the corners in their original locations according to the best available evidence; except as shown hereon, lottings and areas are as shown on plat approved September 3, 1881.

Survey executed by Horace G. Parker
March 2 to 19, 1956, under special instructions dated December 15, 1955, for Group 364, Nevada.

UNITED STATES DEPARTMENT OF THE INTERIOR
BUREAU OF LAND MANAGEMENT
Washington, D. C. November 6, 1956

This plat is strictly conformable to the approved field notes, and the survey, having been correctly executed in accordance with the requirements of law and the regulations of this Bureau, is hereby accepted.

For the Director

Carl G. Harrington
Cadastral Engineering Staff Officer