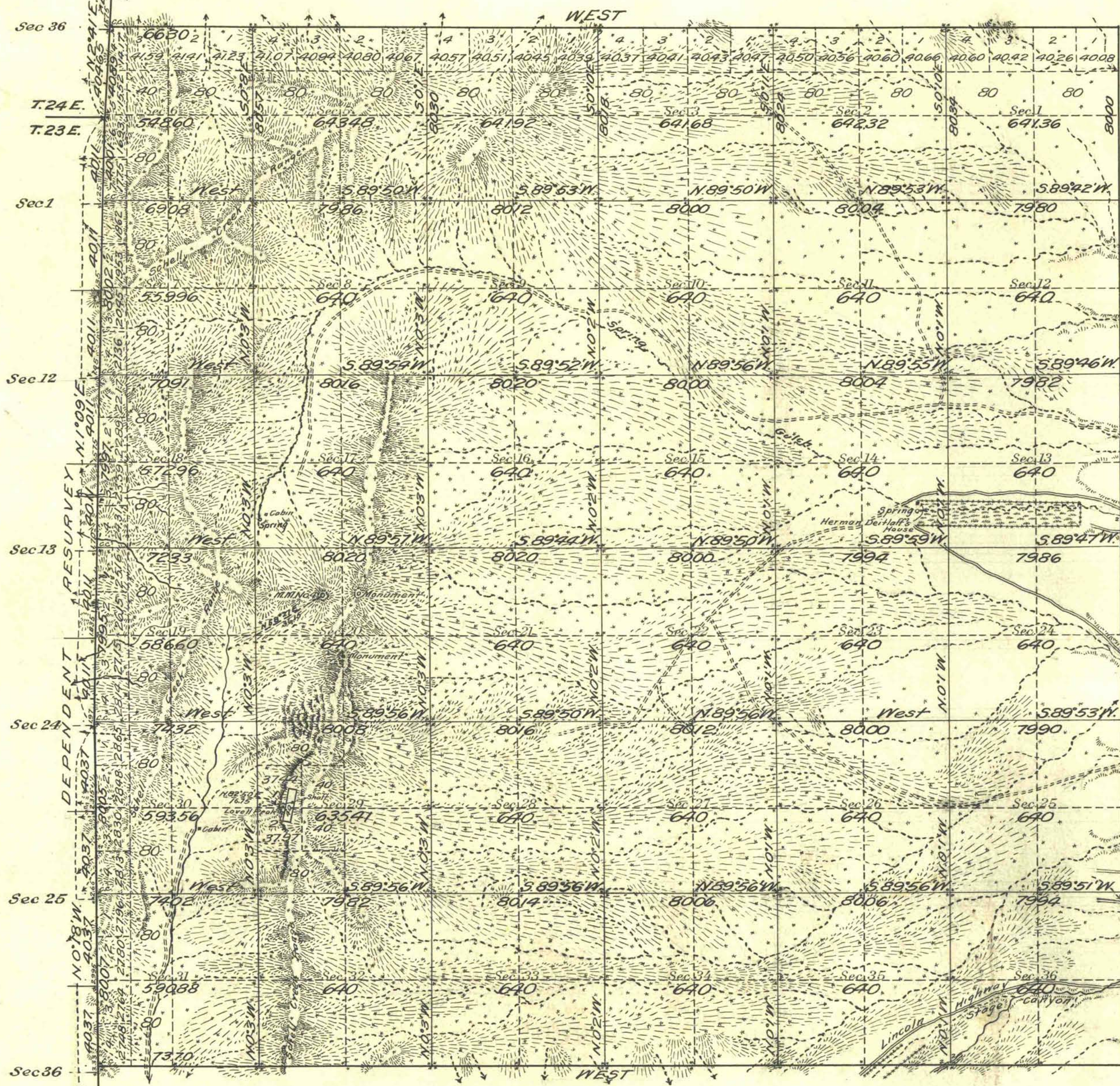


Township No 23 North Range No 65 East Mt Diablo Meridian, Nevada



| SCHELL CREEK MINING DISTRICT | | | |
|------------------------------|--------|----------|--------------------------|
| Lot No. | Lode | Millsite | Claimant |
| 40 | Summit | | PH Lovell and J. Holland |

- NOTE -
 Surveyor reports mineral indications in sections 17, 20, 29, 30 and 31.

| Areas in Acres | |
|--------------------|-----------------|
| Public Land | 22658.73 |
| Indian Reservation | |
| Indian Allotments | |
| Mineral Claims | 4.59 |
| Water Surface | |
| Total Area | 22663.32 |

LATITUDE 39°49'N
 LONGITUDE 114°34'W
 Scale 40 Chains to an inch
 Mean Magnetic Declination

| Survey Designated | By Whom Surveyed | Group No. | Date | Amount of Surveys | | | When Surveyed | |
|----------------------|---------------------|-----------|---------------|-------------------|------|------|----------------|---------------|
| | | | | Mls. | chs. | lks. | Begun | Completed |
| North Boundary | Walter H. Good U.S. | 102 | July 21, 1922 | 5 | 66 | 30 | Sept. 26, 1922 | June 25, 1923 |
| South Boundary | Transitman and | | | 5 | 73 | 70 | Sept. 21, 1922 | June 30, 1923 |
| W. Boundary Dep'ties | Emil Vogt U.S. | | | 7 | 03 | 55 | June 11, 1923 | June 30, 1923 |
| Subdivisions | Cadastral Engineer | | | 59 | 42 | 81 | Sept. 23, 1922 | July 9, 1923 |

The above map of Township No. 23 North Range No. 65 East of the Mt. Diablo Meridian Nevada is strictly conformable to the field notes of the survey thereof on file in this office, which have been examined and approved.
 U. S. Surveyor General's Office.
 Reno Nevada November 21, 1924

J. E. Childer
 Surveyor General.