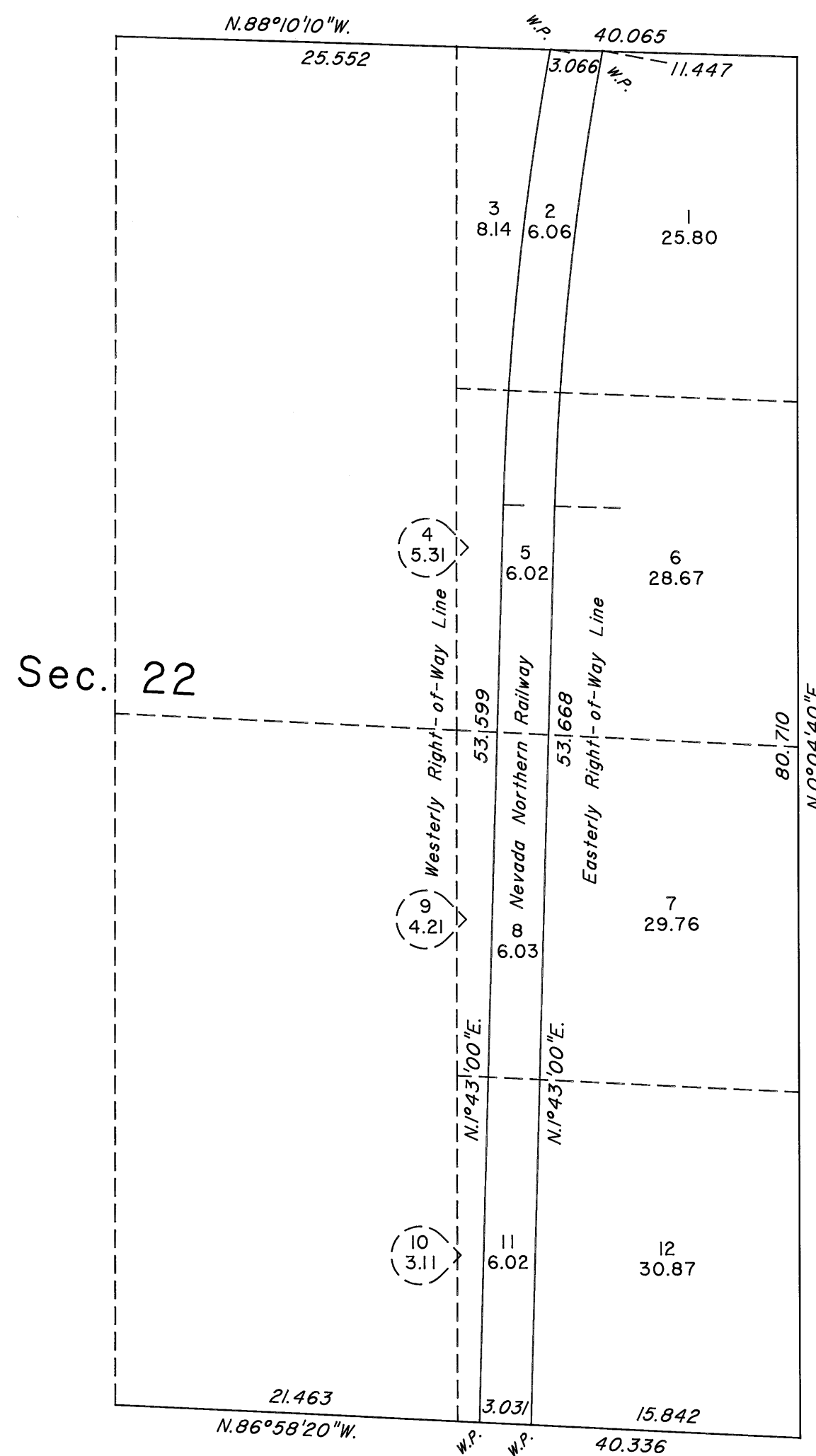
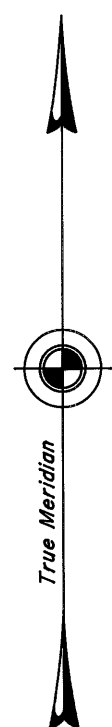


TOWNSHIP 23 NORTH, RANGE 63 EAST, OF THE MOUNT DIABLO MERIDIAN, NEVADA

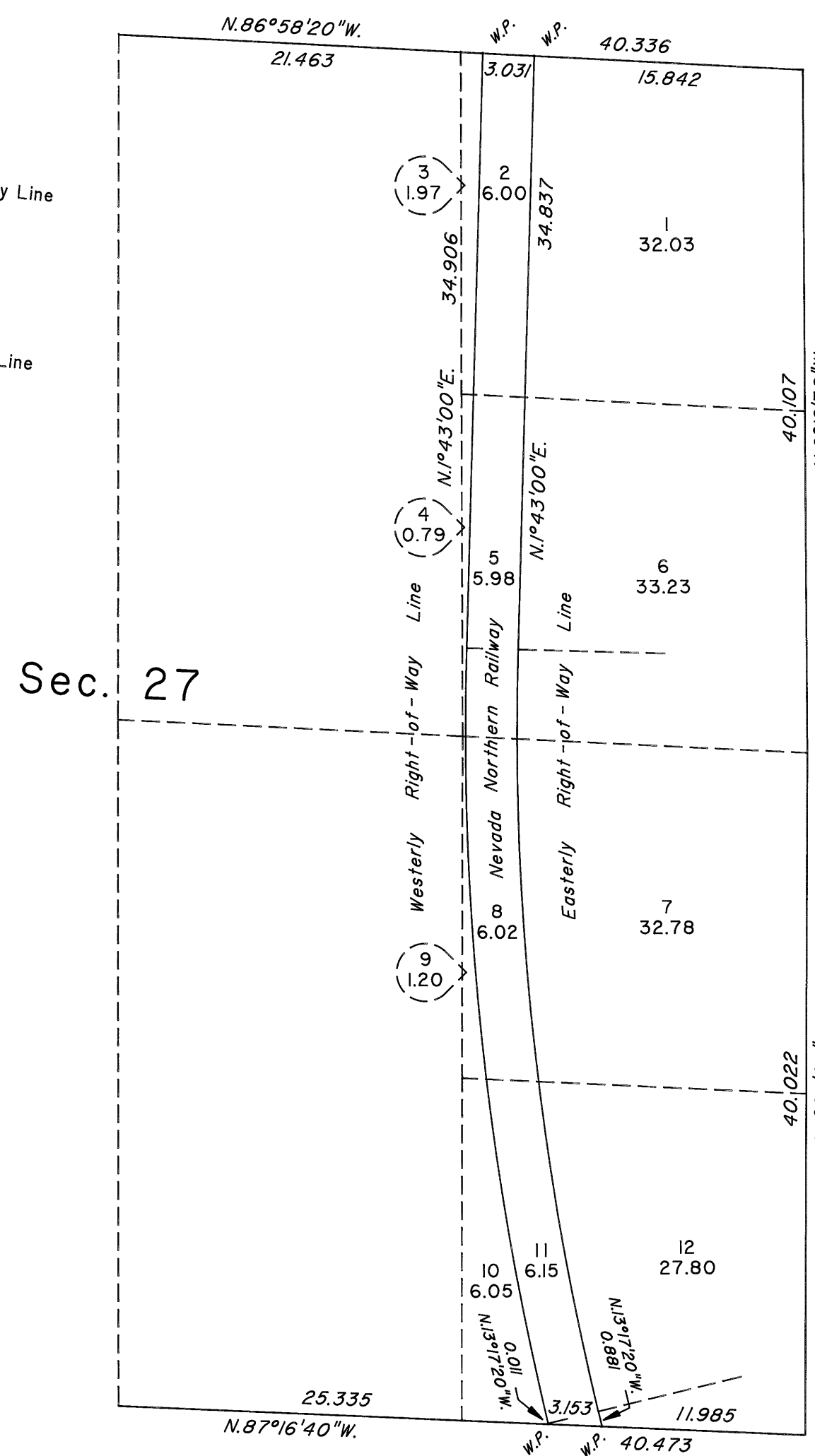
ENLARGED DIAGRAMS

OFFICIALLY FILED
NEVADA STATE OFFICE
at 10:00 AM on September 30, 2010



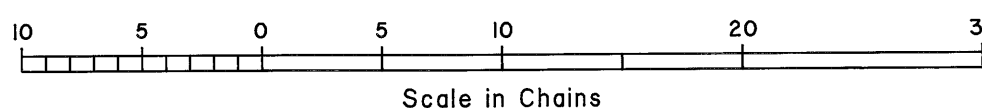
Westerly Right-of-Way Line
 $\Delta = 8^\circ 45' 40''$
 $R = 11559.19 \text{ Ft.}$
 $L = 26.781 \text{ Chs.}$

Easterly Right-of-Way Line
 $\Delta = 8^\circ 54' 50''$
 $R = 11359.19 \text{ Ft.}$
 $L = 26.776 \text{ Chs.}$



Westerly Right-of-Way Line
 $\Delta = 15^\circ 00' 20''$
 $R = 11559.19 \text{ Ft.}$
 $L = 45.868 \text{ Chs.}$

Easterly Right-of-Way Line
 $\Delta = 15^\circ 00' 20''$
 $R = 11359.19 \text{ Ft.}$
 $L = 45.075 \text{ Chs.}$



Reference should be made to Sheet No. 1 for survey information.

UNITED STATES DEPARTMENT OF THE INTERIOR
BUREAU OF LAND MANAGEMENT

Reno, Nevada September 29, 2010

This plat is strictly conformable to the approved field notes, and the survey, having been correctly executed in accordance with the requirements of law and the regulations of this Bureau, is hereby accepted.

For the Director

Chief Cadastral Surveyor, Nevada