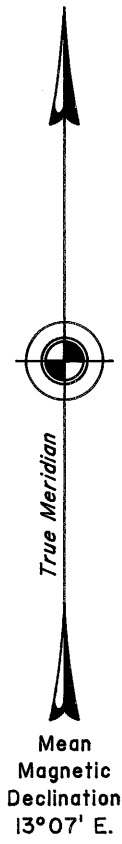


TOWNSHIP 23 NORTH, RANGE 63 EAST, OF THE MOUNT DIABLO MERIDIAN, NEVADA  
DEPENDENT RESURVEY AND METES-AND-BOUNDS SURVEY

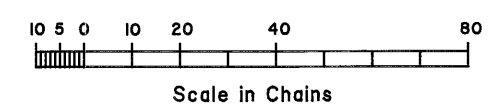
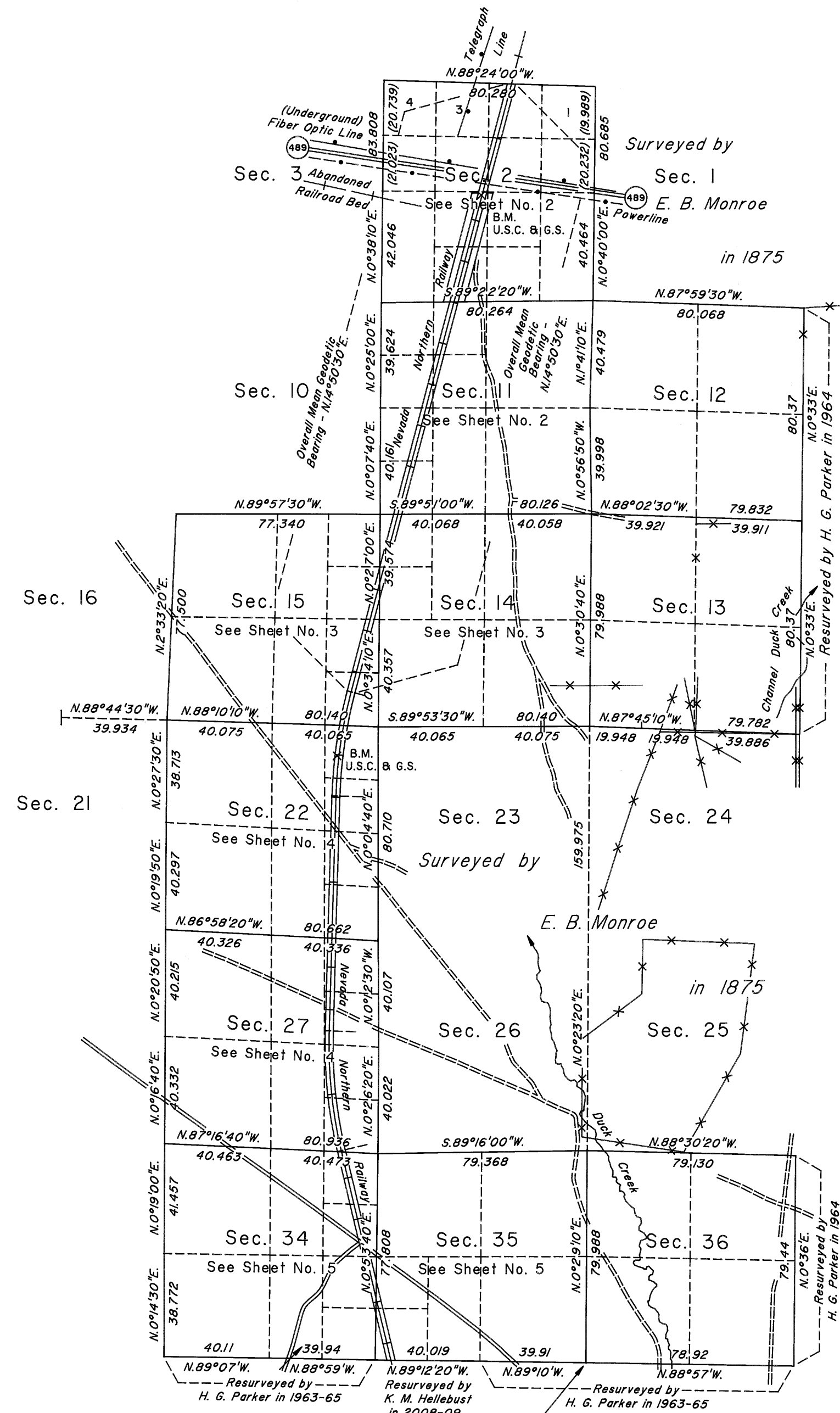
OFFICIALLY FILED  
NEVADA STATE OFFICE  
at 10:00 AM on September 30, 2010



Surveyed by

E. B. Monroe

in 1875



Latitude 39° 48' 44.379" N.  
Longitude 114° 48' 32.139" W.  
NAD 83 (CORS 96)

Surveyed by  
E. B. Monroe  
in 1875

Surveyed by  
E. B. Monroe  
in 1875

Resurveyed by H. G. Parker in 1963-65  
Resurveyed by K. M. Hellebust in 2008-09  
Resurveyed by H. G. Parker in 1963-65

A history of surveys is contained in the field notes.  
This plat, in five sheets, represents the dependent resurvey of a portion of the north boundary and a portion of the subdivisional lines designed to restore the corners in their true original locations according to the best available evidence, metes-and-bounds surveys of the easterly and westerly right-of-way lines of the Nevada Northern Railway and metes-and-bounds survey of portions of the Cherry Creek Station Grounds, Township 23 North, Range 63 East, Mount Diablo Meridian, Nevada.  
Except as indicated hereon, the lottings and areas are as shown on the plat approved February 7, 1876.  
Survey executed by Kane M. Hellebust, Cadastral Surveyor, beginning September 4, 2008, and completed December 4, 2009, pursuant to Special Instructions dated August 4, 2008, for Group No. 869, Nevada.

UNITED STATES DEPARTMENT OF THE INTERIOR  
BUREAU OF LAND MANAGEMENT  
Reno, Nevada September 29, 2010

This plat is strictly conformable to the approved field notes, and the survey, having been correctly executed in accordance with the requirements of law and the regulations of this Bureau, is hereby accepted.

For the Director  
*David H. Moran*

Chief Cadastral Surveyor, Nevada