

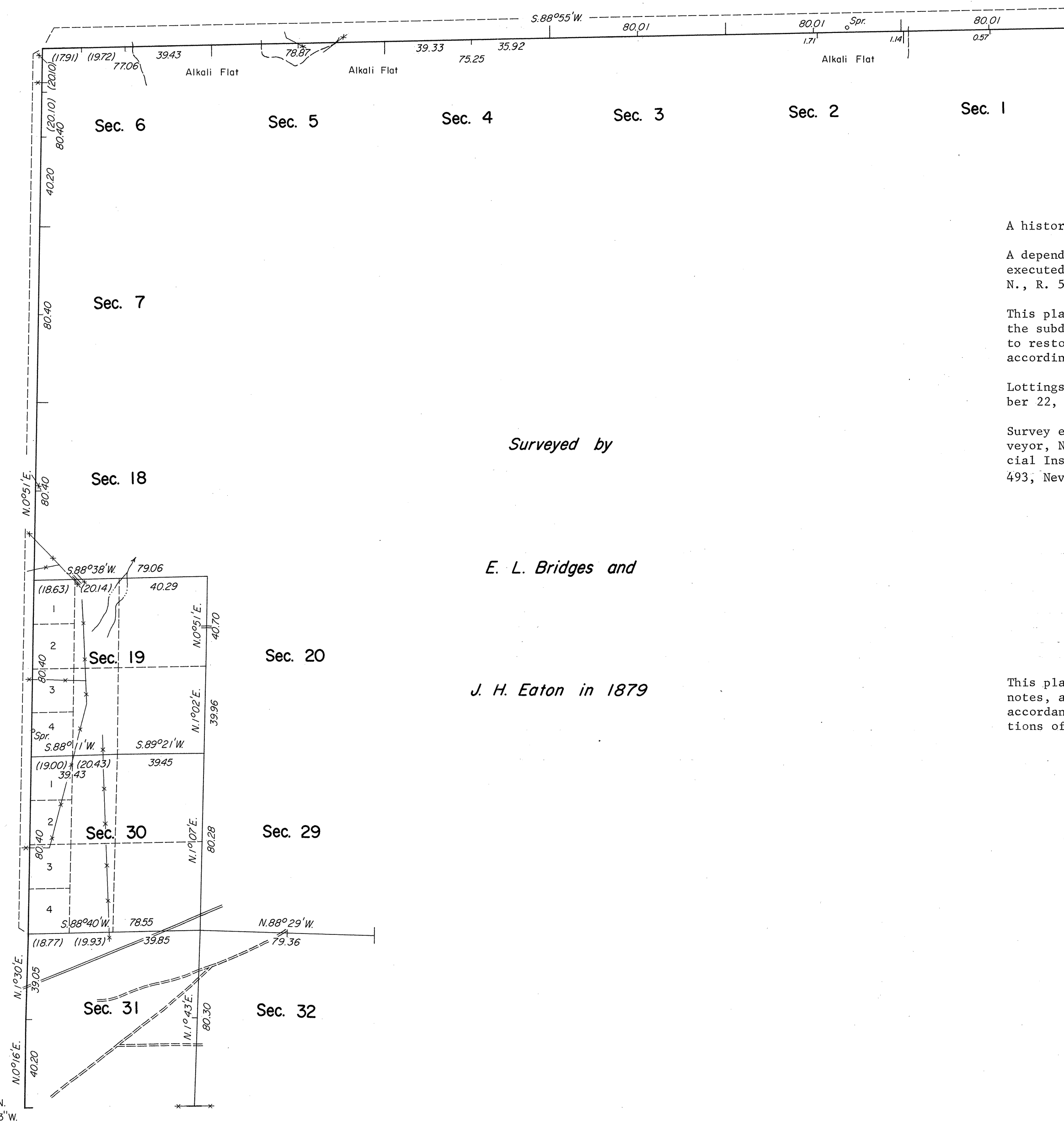
# TOWNSHIP 23 NORTH, RANGE 53 EAST, OF THE MOUNT DIABLO MERIDIAN, NEVADA

## DEPENDENT RESURVEY

Sec. 34

Sec. 35

Sec. 36



A history of surveys is contained in the field notes.

A dependent resurvey of the west and north boundaries was executed concurrently under T. 23 N., R. 52 E., and T. 24 N., R. 53 E., respectively, of this Group.

This plat represents a dependent resurvey of a portion of the subdivisional lines of T. 23 N., R. 53 E., designed to restore the corners in their true original locations according to the best available evidence.

Lottings and areas are as shown on the plat approved October 22, 1879.

Survey executed by Gerald W. Hochstrasser, Cadastral Surveyor, November 9, 1972, to September 4, 1973, under Special Instructions dated October 13, 1972, for Group No. 493, Nevada.

Surveyed by

*E. L. Bridges and*

*J. H. Eaton in 1879*

UNITED STATES DEPARTMENT OF THE INTERIOR  
BUREAU OF LAND MANAGEMENT  
Washington, D.C. December 10, 1975

This plat is strictly conformable to the approved field notes, and the survey, having been correctly executed in accordance with the requirements of law and the regulations of this Bureau, is hereby accepted.

For the Director

*Bernard W. Feltz*  
Chief, Division of Cadastral Survey

10 5 0 10 20 40 80  
Scale in Chains